

Horsham Rural City Municipality

Municipal Fire Management Plan 2017 – 2020 Version 2.0



Sunset at Horsham Police Paddock. Photo by Flora Haggis

PUBLIC VERSION

Quick References

- Municipal Fire Profile p15
- Risk Management Strategies p18
 - Community Information Guides p21
 - Bushfire Places of Last Resort p21
 - Cross Boundary Arrangements p25

Appendices

- C: Bushfire Risk Register p33
- G: Strategic Fire Breaks Map p63



Horsham Rural City
Council urban rural balance

FOREST FIRE MANAGEMENT VICTORIA



vic roads

VICTORIA
State Government

Health
and Human
Services



Department of
Environment, Land,
Water & Planning



Department of
Economic Development,
Jobs, Transport & Resources

- This page intentionally left blank -

Table of Contents

Document Information	6
Amendment Register	6
Public Access	7
Administrative Updates	7
Glossary and Acronyms	7
Distribution of the MFMP.....	8
Disclaimer	8
MFMP Contact Details	8
Authority and Endorsement	9
Introduction	10
Purpose	10
Context of the Plan.....	10
Municipal Fire Management Objectives.....	12
Plan Reporting, Review and Improvement	13
Legislative Responsibilities	13
Plan Reporting	13
Plan Audit	13
Plan Amendment and Review	13
Engagement and Communications	14
Municipal Fire Profile	15
Natural Environment.....	15
Land Use.....	16
History of Fire and Ignition Causes	17
Future Fire Management Implications.....	17
Fire Risk Management Strategies	18
Risk Assessment Methodologies	18
Analysis and Prioritisation of Municipal Fire Risk	18
Community Information Guides	21
Neighbourhood Safer Places – Places of Last Resort.....	21
Strategic Fire Breaks.....	21
Community Fire Refuges	22
Bushfire Risk Treatments for Property Owners	23
Cross Boundary Arrangements	25
Appendices	26

Appendix A: Horsham Rural City Municipal Fire Management Planning Committee Terms of Reference.....	26
Appendix B: Fire Risk Management Strategies	29
Appendix C: Horsham Rural City Bushfire Asset Risk Management & Reporting Register	33
Appendix: D: Hazard Trees Identification and Notification Procedures	56
Appendix E: Neighbourhood Safer Places	61
Appendix F: Horsham Rural City Municipal Boundary Map	62
Appendix G: Strategic Fire Breaks	63
Appendix H: Documents and Links	77

List of Figures

Figure 1: Hierarchy of Plans.....	11
Figure 2 Hazard tree notification process	59
Figure 3 Horsham Rural City boundary map	62
Figure 4 Map of Horsham Rural City strategic fire breaks.....	76

List of Tables

Table 1 Amendment Register	6
Table 2 Horsham Rural City Municipality Major Public Land Holdings	15
Table 3 Horsham Rural City Municipality Major Bushfire	17
Table 4 Bushfire Priority with VFRR Asset Classes and Sub-Classes	19
Table 5 Horsham Rural City Municipal Community Information Guides	21
Table 6 Horsham Rural City Municipality Cross Boundary Risks	25
Table 7 Fire Risk Management Strategies - Community Education and Engagement	29
Table 8 Fire Risk Management Strategies - Hazard Reduction	30
Table 9 Fire Risk Management Strategies - Preparedness	31
Table 10 Fire Risk Management Strategies - Regulatory Controls	32
Table 11 Horsham Rural City Bushfire Asset Risk Management & Reporting Register	55
Table 12 Hazard tree notification contact details	58
Table 13 Horsham Rural City municipality Neighbourhood Safer Places - Places of Last Resort	61
Table 14 Strategic fire breaks - fire suppression lines	63
Table 15 Strategic fire breaks - fire control lines	68
Table 16 Strategic fire breaks - CFA brigade works	75

Document Information

Amendment Register

Criteria			Details
Document Title			Horsham Rural City Municipal Fire Management Plan
Document Custodian			Horsham Rural City Council
Version Number	Date of Issue	Author(s)	Brief Description of Change
1.0	May 2012	Horsham Rural City MFMPC	Adoption of Version 1.0
1.1	Sep 2014	Wimmera Emergency Management Cluster	Updated Section 3.7, Chapter 5, Section 6.5, Appendix A, B, C.2, C.3 and H. Changed Township Protection Plan (TPP) to Community Information Guide (CIG). Inclusion of Disclaimer, new Section 6.3 – Plan Reporting and change existing Section 6.3, 6.4 to the next sequence.
1.2	Oct 2015	Wimmera Emergency Management Resource Sharing Program	Department names, legislation references, authorisation and plan duration updated. Updated references in environmental scan. Updated data from VFRR for consistency with State-wide dataset.
2.0	Jun 2017	Wimmera EM Team & Hindmarsh Shire MFMPC	Review and rewrite
2.0	Oct 2019	WEMT and Horsham MFMPC	Review of Appendices A, C and G.

Table 1 Amendment Register

Public Access

- A Public Access version of the plan is placed on the Council's website under the Emergency Management tab: www.hrcc.vic.gov.au
- A Restricted full version of the plan is available by contacting the MERO on the contact details below.
- Please note the Public Version will have some detail removed to comply with confidentiality and privacy requirements. The Restricted version has full details included and is only made available to relevant agencies and their representatives who have a role or responsibility detailed in this plan.
- The current version of this sub-plan is maintained by Council on the "Crisisworks" emergency management platform for Council and approved agency staff access.
- Names and contact details in the Restricted version of this Plan is only to be used for emergency management purposes and must be managed in accordance with the Privacy and Data Protection Act 2014.

Administrative Updates

Administrative updates will be made to this plan from time to time that will be noted in the Amendment Register section. These amendments are of an administrative nature and do not substantially change the content or intent of this plan. These amendments do not require the plan to be endorsed by the Committee or Council.

Where there is substantial change required to the content or intent of the plan the plan will need to go through the endorsement process.

Glossary and Acronyms

Definitions of words and phrases used in the MFMP have the same meaning as those prescribed in the relevant legislation and should be referred to, they include:

- Country Fire Act 1958
- Emergency Management Act 1986
- Emergency Management Act 2013
- Local Government Act 1958
- Risk Management Standard ISO: 31000 2009

The MFMP follows the practice of writing a name in full followed by the acronym in brackets after it and is used thereafter in the plan.

Distribution of the MFMP

The Horsham Rural City MFMP is intended for the use of the members of the Horsham Rural City MFMP, MEMPC and the Grampians Regional Strategic Fire Management Planning Committee.

The Horsham Rural City MFMP will be distributed according to the committee membership of the MFMP, MEMPC and Grampians RSFMPC as required.

Please refer to the [Disclaimer](#) of this plan for further details about the intended uses and appropriate distribution of this document.

Disclaimer

No reader should act on the basis of any matter contained in this publication without appreciating that it may be the subject of amendment or revocation from time to time without notice. Horsham Rural City Council expressly disclaims all and any liability (including liability in negligence) to any person or body in respect of anything and of the consequences of anything done or omitted to be done by any such person or body in reliance, whether total or partial, upon the whole or any part of this publication.

MFMP Contact Details

Please address all enquiries and feedback to the:

Municipal Emergency Resource Officer
Horsham Rural City Council
PO Box 511
Horsham Vic 3402
council@hrcc.vic.gov.au
www.hrcc.vic.gov.au

Authority and Endorsement

Horsham Rural City Council is the custodian of the Municipal Fire Management Plan (MFMP) pursuant to current legislative arrangements. This MFMP was endorsed at a meeting on 17 October 2017 by the Horsham Rural City Municipal Fire Management Planning Committee (hereafter referred to as “the MFMPC” or “the Committee”).

The MFMP was endorsed as a sub plan to the Horsham Rural City Municipal Emergency Management Plan (MEMP) at a meeting on 17 November 2017 by the Horsham Rural City Municipal Emergency Management Planning Committee (hereafter referred to as “the MEMPC”).

The Horsham Rural City MFMP was adopted by the Horsham Rural City Council at a meeting on 4 December 2017.

Chairperson of the Municipal Fire Management Planning Committee
Councillor Les Power
17/10/2017

Chairperson of the Emergency Management Planning Committee
Councillor Mark Radford
17/11/2017

Chief Executive Officer Horsham Rural City Council
Peter Brown
04/12/2017

Introduction

Bushfires are a natural part of the landscape of Victoria. Learning from past experiences before, during and after a fire improves the way we can mitigate, prepare for, respond to and recover from fires.

The Horsham Rural City Municipal Fire Management Plan (HRC MFMP) is risk based, prepared and maintained as a sub-plan to the Municipal Emergency Management Plan (MEMP) to ensure that the linkages across fire prevention, response and recovery (PRR) programs are consistent and holistic. The plan also contains appropriate reference to other uses of fire, including agricultural, ecological and cultural applications.

The second iteration of the HRC MFMP seeks to achieve consistent and effective fire management planning across the Municipality through commitment to cooperation, including sharing and building of collective knowledge and experience at municipal and regional levels.

Critical to the success of integrated fire management planning is the ongoing building and maintaining of relationships across government, the private sector and the broader community.

The HRC MFMP is an integrated cross-agency fire management plan that may link to other agency plans listed in [Appendix H: Documents and Links](#)

Purpose

The purpose of the Horsham Rural City Municipal Fire Management Plan is to document the planned and coordinated implementation of measures designed to minimise the occurrence and mitigate the effect of bushfire.

Context of the Plan

State and Regional Planning

The plan is based on the Integrated Fire Management Planning (IFMP) framework.

The Victorian Government developed the Integrated Fire Management Planning (IFMP) Framework for Victoria in response to recommendations made in the Victorian Bushfire Inquiry 2009. The aim of IFMP is to achieve a consistent and effective means for fire management planning within Victoria through a commitment to cooperation, including information sharing and the building of collective knowledge.

The planning framework operates under existing fire and emergency management legislation which is currently evolving. This approach does not replace the existing statutory roles and responsibilities of agencies; it supports and enhances them through government and agencies working together.

The State Fire Management Planning Committee has been created to establish, enable and monitor the implementation of the IFMP Framework, ensuring its consistency and sustainability. The committee provides policies and direction to facilitate an integrated approach to fire management planning across Victoria

Regional Strategic Fire Management Planning Committees have been established across eight regions throughout Victoria and work collaboratively to produce a Regional Strategic Fire Management Plan. HRC is one of eleven

municipalities in the Grampians Region. The Regional Strategic Fire Management Plan is risk-based and considers the needs of the region as a whole. This plan guides the development of each municipal level plan within the region and includes advice on various treatment options, which may be considered in municipal level planning. The Grampians Regional Strategic Fire Management Planning Committee provides a critical link between municipal and state fire management planning.



Figure 1: Hierarchy of Plans

Many other organisational plans and strategies have strong links to the development of this plan. The strategic intent of these plans is captured within this plan but the detail remains within those organisations documents.

For these and any other relevant strategies and/or documents which influence this plan refer to [Appendix H: Documents and Links](#)

Horsham Rural City Municipal Fire Management Planning Committee

The Municipal Fire Management Planning Committee (MFMP) is a sub-committee of the Municipal Emergency Management Planning Committee (MEMPC) and determines its procedures subject to the guidelines provided in the Emergency Management Manual Victoria. For information regarding the purpose and role of the MFMP refer to [Appendix A: MFMP Terms of Reference](#).

Municipal Fire Management Objectives

The Horsham Rural City (HRC) MFMP is a strategic and operational document that identifies communities and assets at risk through an Environmental Risk Scan. This incorporates Council's existing Municipal Fire Prevention Plan and Municipal Emergency Management Plan. It also uses the Victorian Fire Risk Register (VFRR) tool to identify assets at risk from bushfire and treatments currently applied to mitigate risk.

The primary objective of the HRC MFMP is to ensure the community shares responsibility for implementing the strategies contained within the plan to create a safer municipality in partnership with the HRC MFMP by:

- Effectively managing and reducing the risk of fire, with a view to protecting life and property with due regard to our natural environment.
- Aligning and integrating existing fire management planning and practices across agencies and the community.

The Horsham MFMP objectives are also guided by the five key objectives of the Grampians Regional Strategic Fire Management Plan which include:

- Planning together - State, regional, municipal and local fire management plans will be linked with a common purpose and a consistent assessment of risk. The plans will be prepared in consultation with those most-affected and available to all interested parties.
- Implementing collaboratively the activities agreed to in the plans by preparing programs designed to include the common needs of those most vulnerable and affected by the adverse impacts of fires
- Building knowledge by sharing information and interacting with academic and professional institutions, other jurisdictions and communities
- Building capability by applying knowledge and continuous improvement principles in an environment that allows for innovation and change
- Using fire to support the health of our natural, economic, social and cultural environments

The Horsham MFMP aims to create greater community awareness and communicate fire management information more effectively through undertaking the following objectives:

- Ensure that plans and actions are in place for minimising the risk of an outbreak of fire or for suppressing any fire that may occur within the area (Section 55 of the CFA Act).
- Develop programs that are relevant to the community.
- Measure fire safety outputs to assess the reduction in community vulnerability to fire.
- Engage community groups and businesses in ongoing dialogue about fire mitigation solutions including fire prevention activities.
- Liaise with other agencies and committees to ensure integration and consistency of purpose.

The community will share responsibility for implementing the strategies contained within the plan and create a safer municipality in partnership with the HRC MFMP.

Plan Reporting, Review and Improvement

Legislative Responsibilities

Horsham Rural City Council has a legislative responsibility under the [Emergency Management Act 1986](#), the Emergency Management Manual of Victoria (EMMV) and under Section 55A (1) of the CFA Act to develop and implement a MFPP.

The MFMP is a sub plan of the MEMP and is prepared by the MFMPC.

Plan Reporting

The MFMPC reports after each meeting to the MEMPC on the progress of the committee and associated works.

Agencies assigned actions within the MFMP report on their progress using the reporting tool listed at [Appendix C: Horsham Rural City Bushfire Asset Risk Management Reporting Register](#). Reporting on actions is required at each MFMPC meeting.

Any issues requiring advocacy or elevation to Regional or State level are reported through to the Grampians RSFMP for further action.

Plan Audit

The MFMP will be audited under Section 55B of the CFA Act. This audit will be undertaken on a 3 yearly cycle from adoption of the plan.

Plan Amendment and Review

This plan expires in October 2020 and has a lifespan based around current audit requirements contained within Section 55B of the CFA Act. It is acknowledged that audit process and planning cycles may change as planning processes evolve in the future.

Other elements requiring annual update include the provision of Neighbourhood Safer Places - Places of Last Resort as they are established and Community Information Guides as they are developed.

The Horsham Rural City MFMP will be reviewed and amended as follows:

- As required by legislation
- Following significant incidents
- At the request of the MEMPC
- At the request of the State or Regional Fire Management Planning Committees

Engagement and Communications

The Horsham Rural City MFMP undertakes communication and community engagement activities to support the development, review and implementation of the Municipal Fire Management Plan (MFMP). The Committee is guided by Council's communication and community engagement strategies and may develop specific plans to support communication and engagement with fire stakeholders and the community.

The Committee recognises the value of local knowledge and the unique contribution the community can make to the municipal fire management planning process.

Community engagement is driven by a schedule of fire management activities as identified in the MFMP. The Committee will engage the support of organisations which are generally members of the Committee, promoting an integrated approach to fire management within the community and providing support to communities as required.

The fire management engagement activities may include the distribution of information to the community, visitors to the municipality and the formation of appropriate fire groups as required.

The Committee utilises the International Association of Public Participation (IAP2) Spectrum to guide engagement activities. Further information about the Spectrum can be viewed at www.iap2.org.au/Home. The Committee will use the Spectrum to determine the level of engagement with key stakeholders and the community.

Local Fire Advisory Committee

Horsham Rural City Council facilitates a Local Fire Advisory Committee mainly composed of CFA Group Officers and Brigade Captains who meet prior to a MFMP meeting to discuss relevant local fire issues. The Minutes of these meetings are forwarded to the MFMP for their information and consideration.

During an Emergency event

Community members are advised to access more than one source for emergency information and warnings:

- tune in to local radio or other [emergency broadcasters](#)
- watch SKY News
- download the [VicEmergency app](#)
- phone the VicEmergency Hotline on 1800 226 226
- follow VicEmergency on [Facebook](#) or [Twitter](#)
- access Facebook or Twitter accounts for other agencies e.g. CFA or VICSES
- access Horsham Rural City Council on [Facebook](#)

VicEmergency is a centralised website for Victorians to find emergency information and warnings. Preparedness and recovery information related to emergencies is also available.

The website has a real-time Google Map display with incidents across the state including floods, storms, fires, earthquakes, tsunamis, beach closures, shark sightings and more.

Visit <http://emergency.vic.gov.au/respond/> to access VicEmergency.

Municipal Fire Profile

For detailed information regarding the municipal profile of the HRC municipality refer to the Municipal Emergency Management Plan. The following information relates to the municipal fire profile.

Natural Environment

The Horsham Rural City Council area provides a connection between the northern section of the Grampians National Park, the end of the Great Dividing Range and the Little Desert National Park abutting the northern boundary. Mt Arapiles-Tooan State Park and Jilpanger Nature Conservation Reserve are located in the west near Natimuk. Black Range State Park is in the south, with this southern border also abutting Rocklands Reservoir. There are numerous smaller state forests and nature conservation reserves scattered throughout and many private bushland blocks and vegetated roadsides and corridors providing the link from the south to the north.

The Heritage listed Wimmera River is the dominant feature of the municipality, with a number of smaller rivers and creeks including, Mt William, Golton, Bungalally, MacKenzie, Burnt, Norton and Darragan joining it prior to or close to Horsham, and Yarriambiack Creek being sourced from the Wimmera River upstream of Horsham. . The Wimmera River traverses the entire municipality from south to north. The Natimuk Creek system is a much smaller system and is fully contained within the Horsham Rural City Council boundary terminating in Natimuk Lake, just north of the Natimuk township. This intricate system of creeks and rivers can make firefighting difficult due to the numerous river crossings and the need for maintenance of these crossings. There are limited heavy machinery crossings of the Wimmera River system.

Connected to this intricate system of waterways are a number of recreational lakes. Some are part of the water management system serving towns and farms in the region. Others are naturally filled lakes and swamps that are seasonal. These sites provide a range of opportunities for people such as camping, skiing, hunting and fishing. The main season for many of these activities is spring and summer with seasonal population increases in these areas.

The following table depicts the major public land holdings in or adjacent to the Horsham Rural City Municipality:

Name	Manager	Size
Grampians National Park	Parks Victoria	168,110 ha
Mt Arapiles-Tooan State Park	Parks Victoria	7,470 ha
Black Range State Park	Parks Victoria	11,700 ha
Jilpanger Nature Conservation Reserve	Parks Victoria	12,097 ha
West Wail Flora & Fauna Reserve	Parks Victoria	586 ha
Little Desert National Park	Parks Victoria	132,647 ha

Table 2 Horsham Rural City Municipality Major Public Land Holdings

Land Use

Around 85.7% of the land in the municipality is used for rural enterprises, with less than 1% (Department of Health, Modelling, 2013) being used for business, industrial or residential purposes. Approximately 7,159 houses are present in the region (Australian Bureau of Statistics, 2011). The municipality encompasses a large area of Victoria's highly productive broad-acre dry land cropping country in the north to highly prized grazing land in the south, bordering the Grampians National Park. The land in the northern area is characterised by wide open flat clay soils with isolated small settlements scattered throughout. As you move further south the land becomes more undulating as it nears the Great Dividing Range and the Grampians National Park. This change in landform aligns with the characteristic changes in fire behaviour, with fast moving grassfire in the north with few settlements, to more intense grass and bushfires with many scattered isolated residents in the south.

The increase in population growth of Horsham has seen an increase in subdivision on the edge of town.

Even though the Grampians National Park is not within the municipality boundary, Horsham provides the largest centre for visitors to stay or purchase supplies. The Wartook Valley area and Dadswells Bridge township abut the National Park and provide a range of accommodation and associated services for visitors. These areas, in particular, have a large increase in seasonal population mostly in the spring/summer period. Mount Arapiles is a mecca for rock climbers from all over the world and there is a constant but transient population in Natimuk and at the mount itself visiting this location. Many of the visitors to both the Grampians and Mount Arapiles are from overseas.

The Wimmera Mallee Pipeline has been implemented across the municipality. This system has replaced the earthen channel system which still remains in place in some areas but will mostly be removed over time. Long established olive plantations exist in the Mt Zero area along with some private property blue gum plantation. There are also a number of private property agro forestry plantations.

Climate and Bushfire Season

The climate in the Horsham area is dominated by warm dry summers and cool wet winters. In recent years there has been a significant decrease in average spring and autumn rainfalls. The bushfire season generally runs from November to April.

Prevailing weather conditions associated with the bushfire season in the Horsham Rural City municipality area are warm to hot north westerly winds accompanied by high temperatures and low relative humidity followed by a cool south westerly change.

Under the State Government climate change projections, Horsham Rural City municipality can expect:

- To be hotter with the greatest increases in temperature expected in summer
- To be drier with greatest decreases in rainfall expected in spring
- To have fewer rainy days but increasing rainfall intensity

History of Fire and Ignition Causes

Due to the patchwork nature of public and private land across the municipality, most fires regardless of ignition will impact on both land tenures. Some of the fires listed had no direct impact on land within the Horsham municipality, but due to the connectedness of the communities and the services provided by Horsham to neighbouring shires they do have an impact on service delivery of this municipality.

A summary of major fires is depicted in the table below:

Date	Location	Ignition Source	Size
Jan 2015	Rocklands – Rees Rd	Lightning	4,700 ha
Jan 2014	Northern Grampians Complex	Lightning	55,000 ha
Jan 2010	Roses Gap	Lightning	1,715 ha
Feb 2009	Remlaw – Horsham	Power pole	1,782 ha
Jan 2006	Mt Lubra – Grampians	Lightning	140,000 ha
Dec 2007	Little Desert	Lightning	15,000 ha
2005	Fulham	Campfire escape	10,000 ha
2002	Dock Lake - Highway	Vehicle/Fairy	100 ha
2000	Laharum	Burn off	1,400 ha
1999	Mt Difficult	Lightning	6,500 ha
1994	Telangatuk	Burn Off	1,500 ha
1991	Jilpanger	Lightning	500 ha

Table 3 Horsham Rural City Municipality Major Bushfires

Future Fire Management Implications

Future vulnerabilities are associated with larger landholdings managed by offsite managers who prefer to travel out to the land from Horsham rather than live on the land. This demographic combined with an aging population has seen previously robust rural communities being replaced by smaller, older more vulnerable communities isolated from services. The shift in population could potentially lead to delayed suppression activities in rural areas, reducing brigades' capacity and resources.

As the population moves away from the smaller townships and settlements more blocks within the smaller towns have absentee land owners, which could lead to a greater vulnerability of those residents who remain and a greater effort of fire prevention enforcement to manage fuel hazard may be required.

Fire Risk Management Strategies

Risk Assessment Methodologies

In developing this plan the committee has considered the State Emergency Management Priorities, they are:

- Protection and preservation of life is paramount. This includes:
 - Safety of emergency services personnel; and
 - Safety of community members including vulnerable community members and visitors/tourists located within the incident area
- Issuing of community information and community warnings detailing incident information that is timely, relevant and tailored to assist community members make informed decisions about their safety
- Protection of critical infrastructure and community assets that supports community resilience
- Protection of residential property as a place of primary residence
- Protection of assets supporting individual livelihoods and economic production that supports individual and community financial sustainability
- Protection of environmental and conservation assets that considers the cultural, biodiversity and social values of the environment.

Following the State priorities, the MFMP aims to reduce the number and severity of fires within the municipality with the intent of creating a more fire resilient community.

Analysis and Prioritisation of Municipal Fire Risk

To determine the bushfire risk within HRC, assessment was undertaken using the environments contained within the Victorian Fire Risk Register (VFRR) process. The VFRR application is a systematic process that identifies assets at risk from fire and assesses their level of risk on a consistent state wide basis using ISO: 31000 2009 Risk Management model (refer <http://www.vfrr.vic.gov.au>)

The VFRR data provided the starting point to assess the effectiveness of existing treatments and determine residual risk levels for the purpose of developing further mitigation treatments as required.

Alignment to Regional Bushfire Risks

The plan also references treatments for the six priority risks in relation to bushfire as determined by the Grampians RSFMPC using the VFRR risk assessment process. The table below identifies the priority risks as articulated in the Grampians Regional Strategic Fire Management Plan (RSFMP) (aligned to the asset classes and subclasses contained within the VFRR tool).

Bushfire		
Grampians RSFMPC Priority	VFRR Asset Class	VFRR Asset Sub Class
Urban Interface	Human Settlement	<ul style="list-style-type: none"> Residential (dense and highly populated areas) Other (less dense areas with a lower population) Special Fire Protection (a vulnerable congregation of people in a particular location at one time)
Power Supply Communications Water Supplies and Catchments Transport	Economic	<ul style="list-style-type: none"> Agriculture Commercial Infrastructure Tourist and Recreational Mines Commercial Forests Water Catchments
Natural Environment	Environmental	<ul style="list-style-type: none"> Locally important Endangered Vulnerable
	Cultural Heritage	<ul style="list-style-type: none"> Aboriginal Significance Non Indigenous Other

Table 4 Bushfire Priority with VFRR Asset Classes and Sub-Classes

Treatment of Municipal Bushfire Risk

State emergency management priorities are underpinned by the primacy of life, as well as the protection of property, economy and the environment. These priorities inform and are integrated into the primary fire risk management strategies used in this plan, which are:

- Community education and engagement
- Hazard reduction
- Preparedness
- Regulatory controls

There are a number of State wide and municipal treatments that have been identified for each fire risk management strategy. Agencies have used these treatments within the Horsham Rural City municipality where appropriate. These treatments include:

- Building Code of Australia
- Bushfire Management Overlays
- Community education and engagement activities
- Community education programs
- Compliance and enforcement of legislation
- Daily Readiness
- Fire hazard inspection program and issue of notice
- Local laws
- Permits to Burn
- Power line hazard tree identification, management and reporting
- Public awareness – multimedia communications

The key objectives and outcomes sought through the implementation of the primary fire risk management strategies for bushfire are set out in [Appendix C Horsham Rural City Bushfire Asset Risk Management & Reporting Register](#)

In addition, there are a range of site-specific plans to reduce specific risks within the municipality that are required by other legislation. Details of these site specific plans are listed in [Appendix H: Documents and Links](#)

Community Information Guides

Currently there are three Community Information Guides in the Horsham Rural City Municipality.

Horsham Rural City Municipality Community Information Guides	
Township/Suburb	Responsible Agencies
Horsham/Haven	CFA
Natimuk	CFA
Dadswells Bridge	CFA

Table 5 Horsham Rural City Municipal Community Information Guides

For specific details on Community Information Guides, please refer to the [CFA website](#).

Neighbourhood Safer Places – Places of Last Resort

Neighbourhood Safer Places – Places of Last Resort (NSPs – PLR) are an area or premises that may, as a last resort, provide some sanctuary from the life threatening effects of a bushfire.

Details of the specific locations of NSPs – PLR within HRC Municipality can be found in [Appendix E: Neighbourhood Safer Places](#)

Strategic Fire Breaks

To create a consistent approach of treatments and understanding across the region the following definitions have been used in the mapping of strategic fire breaks across the municipality. Many other roads across the municipality have works carried out by council, agencies and brigades which no longer show on these maps; however this work is still an integral part of fire management across the municipality.

Strategic Fire Suppression Lines – will have the vegetation managed from fence line to fence line where practicable. Grass will be slashed to a height of 100 mm or less and elevated fine fuels will not surpass a ‘high’ fuel hazard rating as assessed in the Overall Fuel Hazard Assessment Guide.

Fire Control Lines – will have the vegetation managed 3 metres behind the guideposts where practicable. Vegetation will be slashed to a height of 100 mm or less.

Priority Egress/Access Roads (PEAR) – The primary function of PEAR will be to determine what treatments are required along the nominated road to maintain access and egress to an isolated community prior to or after a bushfire event.

All priority roads in the municipality will be assessed and treated in accordance with the Bushfire Risk Assessment Guidelines August 2011.

CFA Brigade Fire Prevention Works Fire CFA Brigade fire prevention works may enhance Strategic Fire Suppression Lines and Fire Control Lines; however the implementation is not compulsory and will be subject to seasonal conditions and Brigade resource availability.

Community Fire Refuges

A Community Fire Refuge is defined in the CFA Act 1958 as a place prescribed by the regulations to be a place that is available for use by the public for short-term shelter from a fire front during a bushfire.

Emergency Management Victoria implemented a Community Fire Refuges Policy June 2015 that provides the framework for identifying, establishing, managing and monitoring Community Fire Refuges in areas of extreme risk where other bushfire survival options are limited or not available.

Victoria currently only has five dedicated Community Fire Refuges (listed on the CFA website). There are no designated Community Fire Refuges within the Horsham Rural City municipality. No location within the municipality has been identified that meet the policy for the establishment of a Community Fire Refuge at this point in time.

Bushfire Risk Treatments for Property Owners

The following is list of bushfire risk treatment options applicable to property owners.

Vegetation Management Rights

Native vegetation is important to many Victorians and its removal is carefully regulated by the planning system. A vegetation management right called the '10/30 or 10/50 rule' is part of a suite of measures to help Victorians in areas at risk from bushfire prepare their properties.

The 10/30 rule simplifies the right to clear native vegetation around a home for bushfire protection without obtaining a planning permit. The right allows landowners to clear without a planning permit:

- any vegetation, including trees, within 10 metres of their home on their property
- any vegetation (except for trees) within 30 metres of their house on their property
- any vegetation either side of their property boundary fence to a combined maximum width of 4 metres (with the consent from the neighbouring landowner)

The 10/50 rule enables all landowners in areas **within the Bushfire Management Overlay** to undertake the following measures for bushfire protection on their property:

- removal, destruction or lopping of any vegetation within 10 metres of an existing building used for accommodation
- removal, destruction or lopping of any vegetation, except trees within 50 metres of an existing building used for accommodation

For new buildings, clearing for bushfire protection will be considered through the planning permit process.

For further information please the consult the following links:

www.cfa.vic.gov.au

www.planning.vic.gov.au/bushfire-protection/bushfire-planning-provisions

Hazard Trees

For detailed information on how to manage 'Hazard Trees' on or near your property please refer to [Appendix D: Hazard Trees Identification and Notification Procedures](#)

Permit to Burn

During the declared Fire Danger Period, limited permits may be obtained by individuals to conduct a fuel reduction or stubble burn within the municipality. These permits are issued under authority of the CFA Act. These permits contain stringent conditions that must be complied with.

Further information may be obtained from Horsham Rural City Council's website www.hrcc.vic.gov.au

Inspection of Private Properties and Issue of Notices

Horsham Rural City Council conducts fire hazard inspections within the municipality, concentrating on high risk areas, typically the rural-urban fringe. Fire prevention notices are issued on land considered to be a fire risk.

Planning Permits

When applications are lodged with Horsham Rural City Council for permits under the Planning and Environment Act for the subdivision of land or the construction of buildings in areas of high fire risk, Horsham Rural City Council may give consideration to the following documents (among other things) in determining any such application and also refer the application to the relevant fire agencies for comment.

- Planning Guidelines for Subdivisions in bushfire-prone areas
- Building in a Bushfire Management Overlay – Guidance Notes – CFA and Department of Planning & Community Development
- Australian Standard 3959, 2009 – Construction of Buildings in Bushfire Prone Areas
- Bushfire Management Overlay – Horsham Rural City Council Planning Scheme
- Other relevant documentation

Cross Boundary Arrangements

Horsham Rural City Council shares borders with Northern Grampians, Southern Grampians, West Wimmera, Hindmarsh and Yarriambiack municipalities. It is the shared responsibility of these MFMPs to ensure that risks contiguous across these borders are planned for in a consistent and seamless manner.

MFMPs will be considered by the RSFMPC to ensure that shared risks across municipal and agency boundaries are appropriately addressed. Current identified cross boundary and contiguous risk from bushfire for the Horsham Rural City municipality includes:

Risk	Adjacent Municipality	Strategy
Dadswells Bridge	Northern Grampians Shire	Ensure alignment of planning and prevention activities in relation to these risks are discussed and coordinated with relevant municipalities. Ensure that these arrangements and plans are included in relevant MFMP's.
Glenelg River	Southern Grampians Shire	
Grampians National Park	Northern Grampians Shire	
	Southern Grampians Shire	
Little Desert National Park	West Wimmera Shire	
	Hindmarsh Shire	
Rocklands Reservoir	Southern Grampians Shire	
Wimmera River	Northern Grampians Shire	
	Hindmarsh Shire	

Table 6 Horsham Rural City Municipality Cross Boundary Risks

Appendices

Appendix A: Horsham Rural City Municipal Fire Management Planning Committee Terms of Reference

Authority

The Horsham Rural City Municipal Fire Management Planning Committee is formed under:

1. Section 21(3) of the Emergency Management Act 1986
2. Section 54 & 55A Country Fire Authority Act 1958

Responsible Officers

Municipal Emergency Resource Officer (MERO)

Municipal Fire Prevention Officer (MFPO)

Purpose

The Committee's purpose is to provide a municipal level forum on fire management.

Role of the Municipal Fire Management Planning Committee

The role of the Committee is prescribed in Part 6A of the Emergency Management Manual Victoria:

- plan for fire management in a manner that coordinates fire management activities across agencies
- provide information to and engage with the community on matters related to fire management planning
- using the planning guide issued by the State Fire Management Planning Committee, draft a Municipal Fire Management Plan for recommendation to the MEMPC and comment by the Regional Strategic Fire Management Planning Committee, prior to consideration by the Council
- monitor, review and report on the delivery of the Municipal Fire Management Plan
- advocate to the Regional Strategic Fire Management Planning Committee for municipal fire management needs
- work with the Municipal Emergency Management Planning Committee to align planning activities
- share knowledge and create an environment of continuous improvement.

Membership

The Committee may be chaired by a Councillor from the Horsham Rural City Council and confirmed by the Committee at their first meeting each year. In the absence of the Councillor, the Committee will be chaired by a member nominated from within the membership and confirmed by the Committee.

The Core membership will consist of:

- Horsham Rural City Council Officers: Municipal Emergency Resource Officer (MERO) and Municipal Fire Prevention Officer (MFPO) or delegates
- Country Fire Authority (CFA) – District 17 Commander or delegate
- Country Fire Authority (CFA) – Manager of Community Safety or delegate
- Country Fire Authority (CFA) Group Officers – Grampians, Horsham, Jilpanger and Natimuk or delegates
- Country Fire Authority (CFA) Brigade representative Dadswell Bridge or delegate
- Dept of Environment, Land, Water and Planning (DELWP); Forest Fire Management (FFM) Victoria, Parks Victoria (PV) or their delegates
- Victoria Police (VicPol)

The following organisations are invited to attend all meetings and will receive all correspondence and meeting invitations

- Horsham Rural City Council representatives
- Regional Roads Victoria (RRV)
- GWMWater
- Country Fire Authority (CFA) - Vegetation Management Officer (VMO)
- VicTrack
- Australian Rail Transport Corporation (ARTC)
- Wimmera Catchment Management Authority (WCMA)

The membership of the Committee will be reviewed annually (mid-year meeting).

Meeting Schedule

The committee will meet three times a year unless otherwise required.

Quorum

A Quorum for a meeting requires the attendance of at least 5 representatives for the agency membership with at least one agency representative from the following core membership:

- Horsham Rural City Council
- Country Fire Authority
- DELWP

Reporting

The MFMPC will report after each meeting to the MEMPC and RSFMPC

Sub-committee

The MFMPC may form sub-committees or working groups as required to work on fire related specific issues

Administration

Administrative support requirements will be determined by the committee and resourced through committee members.

Review of Terms of Reference

The Terms of Reference are reviewed annually (mid-year pre-season meeting).

Appendix B: Fire Risk Management Strategies

Community Education and Engagement				
Objectives	Timeframe	Agency Treatments	Community / Individual Treatments	Outcome
<ul style="list-style-type: none"> To build capacity and knowledge, resilience and understanding of the dangers of bushfire. To provide the tools and education opportunities for community and individuals to better prepare and understand the risks of bushfire. To build awareness and understanding of the role of fire in the environment. 	For the Plan duration – July 2017 to June 2020	<ul style="list-style-type: none"> Community education programs Agency Integrated Community engagement activities Bushfire awareness training Multimedia communications Victoria Bushfire Information Line Increase legislative and regulatory awareness Increased awareness of planning controls Targeted education campaign regarding the use and role of fire in the environment 	<ul style="list-style-type: none"> To be proactive and seek information To be involved in community education and engagement programs 	All agencies will review and evaluate programs and participation of community as part of the review process of the MFMP

Table 7 Fire Risk Management Strategies - Community Education and Engagement

Hazard Reduction				
Objectives	Timeframe	Agency Treatments	Community / Individual Treatments	Outcome
<ul style="list-style-type: none"> To strategically reduce fuel to minimise impact, intensity and spread of bushfire. To pre-plan and establish strategic points to effectively combat and manage structure fire activity. 	For the Plan duration – July 2017 to June 2020	<ul style="list-style-type: none"> Slashing program Burn program Spraying program Pruning program 	<ul style="list-style-type: none"> Private property hazard reduction: Cleaning gutters, Slashing, Mowing, Ploughing, Grazing, Fuel reduction burns 	Shared responsibility between agencies and individuals to minimise fire hazards.

Table 8 Fire Risk Management Strategies - Hazard Reduction

Preparedness				
Objectives	Timeframe	Agency Treatments	Community / Individual Treatments	Outcome
To understand appropriate actions to reduce risk and impact of bushfire, initiatives include: ignition prevention, risk identification and treatment, resource preparation, response planning operational restrictions, system testing, security of water supply	For the Plan duration – July 2017 to June 2020	<ul style="list-style-type: none"> ▪ VFRR process ▪ Establishment of Incident Control Centres ▪ Code red days ▪ Power line inspections ▪ Community Information Guides ▪ Neighbourhood Safer Places – Places of Last Resort ▪ Fire breaks ▪ Emergency Management Plan ▪ Evacuation Plans ▪ Brigade Community Plans 	<ul style="list-style-type: none"> ▪ Personal Bushfire Survival Plans ▪ Daily readiness ▪ Practice / rehearse plans 	<ul style="list-style-type: none"> ▪ All agencies regularly evaluate preparation and readiness to respond to fire ▪ Strengthened capacity for agencies to provide an integrated response ▪ Measurable reduction of the impact of bushfire

Table 9 Fire Risk Management Strategies - Preparedness

Regulatory Controls				
Objectives	Timeframe	Agency Treatments	Community / Individual Treatments	Outcome
<ul style="list-style-type: none"> ▪ To implement regulation aimed to reducing risk and impact of bushfire. ▪ To create and maintain effective linkages between planning functions to better inform proposed residential developments. ▪ To implement regulation aimed to reducing risk and impact of bushfire. ▪ To create and maintain effective linkages between planning functions to better inform proposed residential developments. 	For the Plan duration – July 2017 to June 2020	<ul style="list-style-type: none"> ▪ Fire hazard inspections ▪ Total fire bans ▪ Planning schemes ▪ Fire danger period ▪ Building codes ▪ Enforcement of fire hazard notices ▪ Response to planning applications 	Comply with regulations.	<ul style="list-style-type: none"> ▪ Compliance with regulatory controls ▪ Appropriate residential development

Table 10 Fire Risk Management Strategies - Regulatory Controls

Appendix C: Horsham Rural City Bushfire Asset Risk Management & Reporting Register

(Refer to: https://www.vfrr.vic.gov.au/cb_pages/outputs.php?category_id=2500, for detailed information in relation to the table below)

Risk Rating before Treatments	Asset Description and ID Number	VFRR Asset Class	Existing Treatments	Responsible Agency	Comments / Additional Treatment Recommendations
E	Brimpaen 34053	HS-O			
	Grassfire from north to south, Bushfire out of Black Range on wind change		Burn Program (202) Roadside Vegetation Management (222) Fire Plug and Hydrant Installation and Maintenance (404) Patrol/Inspection (FPN) (303) Local Response Plans (420) Community Education/ Engagement (100) Fire Ready Victoria (107) Public Awareness (109) Hazard Identification (401) Emergency Management Plan (site) (406) Roadside Vegetation Management (223) Emergency Water Supply (440) Roadside Vegetation Management (223)	CFA Council Council Council DELWP CFA CFA CFA CFA Utilities Utilities Utilities RRV	
VH	Brimpaen Pump Station 345179	EC-I			
			Routine Asset Site Maintenance (212) Site Emergency Management Plan (406) Emergency Water Supply (430) Emergency Management Plan (site) (406)	Utilities	GWM Water

VH	Clear Lake 34042	HS-O			
	Grassfire from north and west. Scrub from south west		Fire Access Tracks and Roads (415 & 416) Burn Program (202) Roadside Vegetation Management (222) Fire Plug and Hydrant Installation and Maintenance (404) Patrol/Inspection (FPN) (303) Local Response Plans (420) Community Education/ Engagement (100) Fire Ready Victoria (107) Public Awareness (109) Hazard Identification (401) Emergency Management Plan (site) (406) Roadside Vegetation Management (223) Emergency Water Supply (440) Roadside Vegetation Management (223)	DELWP CFA Council Council Council DELWP CFA CFA CFA CFA Utilities Utilities Utilities RRV	Planned burn program in Jilpanger Nature Conservation Reserve. Council roadsides, DELWP foreshore of Lake
H	Dadswell Bridge 34054	HS-O			
	Grassfire from north to west and east. Bushfire from north west to south.		Burn Program (202) Roadside Vegetation Management (222) Fire Plug and Hydrant Installation and Maintenance (404) Patrol/Inspection (FPN) (303) Local Response Plans (420) Community Education/ Engagement (100) Fire Ready Victoria (107) Public Awareness (109) Hazard Identification (401) Emergency Management Plan (site) (406) Roadside Vegetation Management (223) Emergency Water Supply (440) Roadside Vegetation Management (223)	CFA Council Council Council DELWP CFA CFA CFA CFA Utilities Utilities Utilities RRV	Roadsides, Strategic Breaks recommended. Community Education and Engagement Activities recommended.
	Dadswell Bridge Caravan Park 34027	HS-SFP			

			Routine Asset Site Maintenance (212) Site Emergency Management Plan (409) Emergency Water Supply (430)	Private	Owner
	Dadswell Bridge PH Correction PRV Supply	EC-I			
			Routine Asset Site Maintenance (212) Site Emergency Management Plan (406) Emergency Water Supply (430) Emergency Management Plan (site) (406)	Utilities	Owner
H	Dooen	HS-O			
	Grassfire from north to south		Roadside Vegetation Management (222) Fire Plug and Hydrant Installation and Maintenance (404) Patrol/Inspection (FPN) (303) Local Response Plans (420) Community Education/ Engagement (100) Fire Ready Victoria (107) Public Awareness (109) Hazard Identification (401) Emergency Management Plan (site) (406)	Council Council Council CFA CFA CFA CFA Utilities Utilities	
E	Haven	HS-R			
	Grassfire from any direction is likely.		Roadside Vegetation Management (222) Fire Plug and Hydrant Installation and Maintenance (404) Patrol/Inspection (FPN) (303) Local Response Plans (420) Community Education/ Engagement (100) Fire Ready Victoria (107) Public Awareness (109) Hazard Identification (401) Emergency Management Plan (site) (406)	Council Council Council CFA CFA CFA CFA Utilities Utilities	

	Haven Primary School 34017	HS-SFP			
			Bushfire and Emergency Self-Assessment (438) Routine Asset Site Maintenance (213) Site Emergency Management Plan (407)	DET	
	Horsham College - McKenzie Creek Annex 34016	HS-SFP	Bushfire and Emergency Self-Assessment (438) Routine Asset Site Maintenance (213) Site Emergency Management Plan (407)	DET	
	Karkana Disability Services 34028	HS-SFP			
			Bushfire and Emergency Self-Assessment (438) Routine Asset Site Maintenance (213) Site Emergency Management Plan (407)	Private	Wimmera Uniting Care
	Horsham WTP 3451809	EC-I			
			Routine Asset Site Maintenance (212) Site Emergency Management Plan (406) Emergency Water Supply (430) Emergency Management Plan (site) (406)	Utility	GWM Water
H	Horsham CBD 34046	HS-O			
	Unlikely for fire to reach.		Roadside Vegetation Management (222) Fire Plug and Hydrant Installation and Maintenance (404) Patrol/Inspection (FPN) (303) Local Response Plans (420) Community Education/ Engagement (100) Fire Ready Victoria (107) Public Awareness (109) Hazard Identification (401) Emergency Management Plan (site) (406) Community Fire Refuge or Place of Last Resort (436)	Council Council Council Council CFA CFA CFA Utilities Utilities Council	NSP PLR - Sawyer Park. Council maintained

	ABC Developmental Learning Centre - Horsham 3450544	HS-SFP			
			Bushfire and Emergency Self-Assessment (438) Routine Asset Site Maintenance (213) Site Emergency Management Plan (407)	DET	
	Bennett RD Kindergarten 3450542	HS-SFP			
			Bushfire and Emergency Self-Assessment (438) Routine Asset Site Maintenance (213) Site Emergency Management Plan (407)	Private	HDKA
	Horsham Aquatic Centre 3450545	HS-SFP			
			Routine Site Site Maintenance (216) Site Emergency Management Plan (410) Emergency Management Plan (site) (406)	Council Council Utilities	
	Horsham 298 PS OSHC 3450553	HS-SFP			
			Bushfire and Emergency Self-Assessment (438) Routine Asset Site Maintenance (213) Site Emergency Management Plan (407)	DET	
	Natimuk RD Kindergarten 3450539	HS-SFP			
			Bushfire and Emergency Self-Assessment (438) Routine Asset Site Maintenance (213)Site Emergency Management Plan (407)	Private	HDKA
	Robert's Ave Kindergarten 3450546	HS-SFP			
			Bushfire and Emergency Self-Assessment (438) Routine Asset Site Maintenance (213) Site Emergency Management Plan (407)	Private	HDKA

	Horsham Uniting Church Crèche 3450547	HS-SFP			
			Bushfire and Emergency Self-Assessment (438) Routine Asset Site Maintenance (213) Site Emergency Management Plan (407)	Private	Wimmera Uniting Care
	Horsham Community Child Care Centre 3450548	HS-SFP			
			Bushfire and Emergency Self-Assessment (438) Routine Asset Site Maintenance (213) Site Emergency Management Plan (407)	DET	
	Lutheran PS 34020	HS-SFP			
			Bushfire and Emergency Self-Assessment (438) Routine Asset Site Maintenance (213) Site Emergency Management Plan (407)	DET	
	St Brigids College 3450551	HS-SFP			
			Bushfire and Emergency Self-Assessment (438) Routine Asset Site Maintenance (213) Site Emergency Management Plan (407)	DET	
	St Michael and St John's School 3450549	HS-SFP			
			Bushfire and Emergency Self-Assessment (438) Routine Asset Site Maintenance (213) Site Emergency Management Plan (407)	DET	
	Horsham PS 3450552	HS-SFP			
			Bushfire and Emergency Self-Assessment (438) Routine Asset Site Maintenance (213) Site Emergency Management Plan (407)	DET	
	University Early Learning Centre 3450554	HS-SFP			
			Bushfire and Emergency Self-Assessment (438) Routine Asset Site Maintenance (213) Site Emergency Management Plan (407)	DET	

	Horsham Theatre 34603	HS-SFP			
			Routine Site Maintenance (216) Site Emergency Management Plan (410) Emergency Management Plan (site) (406)	Council Council Utilities	
	Horsham Weir 34250	HS-SFP			
			Routine Site Maintenance (216) Site Emergency Management Plan (410) Emergency Management Plan (site) (406)	Council	
	Wimmera Stock Bazaar 34601	HS-SFP			
			Routine Site Maintenance (212)	Private	Victorian Heritage Register
VH	Horsham Interface 34010	HS-SFP			
	Grassfire from north to west likely		Roadside Vegetation Management (222) Fire Plug and Hydrant Installation and Maintenance (404) Patrol/Inspection (FPN) (303) Fire Access Tracks and Roads (416) Local Response Plans (420) Community Education/ Engagement (100) Fire Ready Victoria (107) Public Awareness (109) Hazard Identification (401) Emergency Management Plan (site) (406)	Council Council Council DELWP CFA CFA CFA CFA Utilities Utilities	
L	Horsham North PS 34031	HS-SFP			
			Bushfire and Emergency Self-Assessment (438) Routine Asset Site Maintenance (213) Site Emergency Management Plan (407)	DET	
L	Horsham North Kindergarten 3450550	HS-SFP			
			Bushfire and Emergency Self-Assessment (438) Routine Asset Site Maintenance (213) Site Emergency Management Plan (407)	DET	

H	Horsham College 34505541	HS-SFP			
			Bushfire and Emergency Self-Assessment (438) Routine Asset Site Maintenance (213) Site Emergency Management Plan (407)	DET	
H	Horsham Special Development School 34030	HS-SFP			
			Bushfire and Emergency Self-Assessment (438) Routine Asset Site Maintenance (213)Site Emergency Management Plan (407)	DET	
	Horsham West PS 34029	HS-SFP			
			Bushfire and Emergency Self-Assessment (438) Routine Asset Site Maintenance (213) Site Emergency Management Plan (407)	DET	
VH	Horsham Aerodrome	EC-I			
			Routine Site Maintenance (216) Site Emergency Management Plan (410) Emergency Management Plan (site) (406)	Council	
	Horsham South 34011	HS-R			
	Likelihood of grassfire from the west to the south west		Roadside Vegetation Management (222) Fire Plug and Hydrant Installation and Maintenance (404) Patrol/Inspection (FPN) (303) Local Response Plans (420) Community Education/ Engagement (100) Fire Ready Victoria (107) Public Awareness (109) Hazard Identification (401) Emergency Management Plan (site) (406)	Council Council Council DELWP CFA CFA CFA CFA Utilities	Council river frontage, Regional Roads Western Highway

L	Green Park Casuarina Kindergarten 3450540	HS-SFP			
			Bushfire and Emergency Self-Assessment (438) Routine Asset Site Maintenance (213) Site Emergency Management Plan (407)	DET	
H	Wimmera Lakes Caravan Park	HS-SFP			
			Burn Program (202) Routine Asset Site Maintenance (212) Site Emergency Management Plan (409) Emergency Water Supply (430)	CFA Private	CFA - Brigade works around the back Private - Owner/Lease Holder
H	Horsham Industrial Precinct 34262	EC-C			
			Routine Asset Site Maintenance (212) Burn Program (202)	Private CFA	Owners/Leasees. Brigade on 'as needed' basis to reduce fine fuels, Johnson, Wool Factory and several small blocks
H	Horsham Regional Livestock Exchange 34207	EC-C			
			Roadside Vegetation Management (222) Routine Asset Site Maintenance (216) Site Emergency Management Plan (410) Static Water Supply	Council	10 tanks and dam on site

VH	Jung 34055	HS-O			
	Grassfire from north to south		Crown Land Fuel Reduction (203 and 204) Roadside Vegetation Management (222) Fire Plug and Hydrant Installation and Maintenance (404) Patrol/Inspection (FPN) (303) Fire Access Tracks and Roads (416) Local Response Plans (420) Community Education/ Engagement (100) Fire Ready Victoria (107) Public Awareness (109) Hazard Identification (401) Emergency Management Plan (site) (406) Roadside Vegetation Management (223)	CFA Council Council Council DELWP CFA CFA CFA CFA Utilities Utilities RRV	Brigade works around Rec Reserve, railway line and back of township. Council roadside maintenance and Vic-Track slashing and spraying
E	Jung Water Pumping Station				
			Routine Asset Site Maintenance (212) Site Emergency Management Plan (406) Emergency Water Supply (430) Emergency Management Plan (site) (406)	Utilities	GWM Water
H	Laharum South 34049	HS-O			
	Grassfire from north to south, Bushfire out of Grampians National Park		Roadside Vegetation Management (222) Fire Plug and Hydrant Installation and Maintenance (404) Community Fire Refuge or Place of Last Resort (436) Fire Access Tracks and Roads (416) Local Response Plans (420) Community Education/ Engagement (100) Fire Ready Victoria (107) Public Awareness (109) Hazard Identification (401) Emergency Management Plan (site) (406)	Council Council Council DELWP CFA CFA CFA CFA Utilities Utilities	Community Education Programs recommended. Laharum NSP PLR maintained by Laharum Football Club volunteers

	Laharum Preschool 34032	HS-SFP			
			Bushfire and Emergency Self-Assessment (438) Routine Asset Site Maintenance (213)Site Emergency Management Plan (407)	DET	
	Laharum Primary School 34033	HS-SFP			
			Bushfire and Emergency Self-Assessment (438) Routine Asset Site Maintenance (213) Site Emergency Management Plan (407)	DET	
	Laharum Bore 34224	EC-I			
			Routine Asset Site Maintenance (214) Site Emergency Management Plan (406)	Utilities	GWM Water
	Laharum Bore's 3451795	EC-I			
			Routine Asset Site Maintenance (214) Site Emergency Management Plan (406)	Utilities	GWM Water
	Mt Zero Water Treatment Plant 34223	EC-I			
			Routine Asset Site Maintenance (214) Site Emergency Management Plan (406)	Utilities	GWM Water
	Distribution Heads 34245	EC-I			
			Routine Asset Site Maintenance (214) Site Emergency Management Plan (406)	Utilities	GWM Water

E	Natimuk 340004				
	Grassfire from north to west	HS-R	Crown Land Fuel Reduction (203 and 204) Roadside Vegetation Management (222) Fire Plug and Hydrant Installation and Maintenance (404) Patrol/Inspection (FPN) (303) Fire Access Tracks and Roads (416) Local Response Plans (420) Community Education/ Engagement (100) Fire Ready Victoria (107) Public Awareness (109) Hazard Identification (401) Emergency Management Plan (site) (406) Roadside Vegetation Management (223) Community Fire Refuge or Place of Last Resort (436)	Council Council Council Council CFA CFA CFA CFA CFA Utilities Utilities Council Council	NSP PLR - Natimuk Showgrounds. Maintained by CoM.
L	Natimuk Lake Caravan Park 34023	HS-SFP			
			Routine Asset Site Maintenance (212) Site Emergency Management Plan (409) Emergency Water Supply (430)	Private	Lease Holder
VH	Natimuk Primary School 3450538	HS-SFP			
			Bushfire and Emergency Self-Assessment (438) Routine Asset Site Maintenance (213) Site Emergency Management Plan (407)	DET	
L	Natimuk Preschool 3450538	HS-SFP			
			Bushfire and Emergency Self-Assessment (438) Routine Asset Site Maintenance (213) Site Emergency Management Plan (407)	DET	
H	Natimuk PH Correction PRV Station 3451801	EC-I			
			Routine Asset Site Maintenance (214) Site Emergency Management Plan (406)	Utilities	GWM Water

L	Natimuk Trunk Main PRV's 3451802	EC-I			
			Routine Asset Site Maintenance (214) Site Emergency Management Plan (406)	Utilities	GWM Water
	West Wimmera Health Service Natimuk Precinct 34022	HS-SFP			
			Bushfire and Emergency Self-Assessment (438) Routine Asset Site Maintenance (213) Site Emergency Management Plan (409)	Private	West Wimmera Health Service
	Mt Arapiles Camping Ground 34036		Bushfire and Emergency Self-Assessment (438) Routine Asset Site Maintenance (215) Site Emergency Management Plan (409) Fire Access Tracks and Roads (415) and (416) Operations Restrictions and Compliance Enforcement of Legislation	DELWP/PV	Campground closed on Code Red Days. Little Deset - Lowan EM Plan. Tank is static. No wood fire between November and April.
	Mt Arapiles Summit Road 34260	EC-I			
			Bushfire and Emergency Self-Assessment (438) Routine Asset Site Maintenance (215) Site Emergency Management Plan (409) Fire Access Tracks and Roads (415) and (416) Operations Restrictions and Compliance Enforcement of Legislation	PV DELWP/PV PV PV DELWP/PV	Road closed on Code Red Days. Little Desert - Lowan EM Plan

VH	Noradjuha 34037	HS-O			
L	Grassfire from any direction		Crown Land Fuel Reduction (203 and 204) Roadside Vegetation Management (222) Fire Plug and Hydrant Installation and Maintenance (404) Patrol/Inspection (FPN) (303) Fire Access Tracks and Roads (416) Local Response Plans (420) Community Education/ Engagement (100) Fire Ready Victoria (107) Public Awareness (109) Hazard Identification (401) Emergency Management Plan (site) (406) Roadside Vegetation Management (223)	CFA Council Council Council DELWP CFA CFA CFA CFA Utilities Utilities RRV	
	Noradjuha PRV control valve Station 2 3451798	EC-I			
VH			Routine Asset Site Maintenance (214) Site Emergency Management Plan (406)	Utilities	GWM Water
	Noradjuha control valve Station 1 3451800	EC-I			
H			Routine Asset Site Maintenance (214) Site Emergency Management Plan (406)	Utilities	GWM Water

H	Pimpinio 34044				
	Grassfire from north to south		Crown Land Fuel Reduction (203 and 204) Roadside Vegetation Management (222) Fire Plug and Hydrant Installation and Maintenance (404) Patrol/Inspection (FPN) (303) Fire Access Tracks and Roads (416) Local Response Plans (420) Community Education/ Engagement (100) Fire Ready Victoria (107) Public Awareness (109) Hazard Identification (401) Emergency Management Plan (site) (406) Roadside Vegetation Management (223)	CFA Council Council Council DELWP CFA CFA CFA CFA Utilities Utilities RRV	
	Pimpinio Water Pumping Station 34218	HS-O			
			Routine Asset Site Maintenance (214) Site Emergency Management Plan (406)	Utilities	GWM Water
E	Quantong 34040	HS-O			
	Grassfire from north to south		Crown Land Fuel Reduction (203 and 204) Roadside Vegetation Management (222) Fire Plug and Hydrant Installation and Maintenance (404) Patrol/Inspection (FPN) (303) Fire Access Tracks and Roads (416) Local Response Plans (420) Community Education/ Engagement (100) Fire Ready Victoria (107) Public Awareness (109) Hazard Identification (401) Emergency Management Plan (site) (406) Roadside Vegetation Management (223)	CFA Council Council Council DELWP CFA CFA CFA CFA Utilities Utilities RRV	

	Quantong Flood Warning Gauge 34233				
			Routine Asset Site Maintenance (214) Site Emergency Management Plan (406)	Utilities	GWM Water
H	Riverheights 34008	HS-R			
	Grassfire from north to north-west likely		Crown Land Fuel Reduction (203 and 204) Roadside Vegetation Management (222) Fire Plug and Hydrant Installation and Maintenance (404) Patrol/Inspection (FPN) (303) Fire Access Tracks and Roads (416) Local Response Plans (420) Community Education/ Engagement (100) Fire Ready Victoria (107) Public Awareness (109) Hazard Identification (401) Emergency Management Plan (site) (406) Roadside Vegetation Management (223)	CFA Council Council Council DELWP CFA CFA CFA CFA Utilities Utilities RRV	
	Longerenong Agricultural College 34043	HS-SFP			
			Routine Asset Site Maintenance (212) Site Emergency Management Plan (409)	Private	Skill Invest
	Wimmera Machinery Field Days 34034	HS-SFP			
			Routine Asset Site Maintenance (212) Site Emergency Management Plan (409)	Private	
	Wimmera Machinery Field Days 34216	EC-TR			
			Routine Asset Site Maintenance (212) Site Emergency Management Plan (409)	Private	

	Longerenong Water Pumping Station	EC-I			
			Routine Asset Site Maintenance (214) Site Emergency Management Plan (406)	Utilities	GWM Water
H	Riverside 34047	HS-R			
	Fire from river escarpment likely		Routine Asset Site Maintenance (216) and (215) Fire Access Tracks and Roads (413) and (416) Patrol Inspection (FPNs) (303) Emergency Water Supply (440) and (404)	Council/DELWP Council/DELWP Council CFA/Council	Roadside
E	Horsham Electricity Terminal Station 34228	EC-I			
			Routine Asset Site Maintenance (214) Site Emergency Management Plan (406)	Utilities	
VH	Taylors Lake Water Pumping Station 34229	EC-I			
			Routine Asset Site Maintenance (214) Site Emergency Management Plan (406)	Utilities	GWM Water
	Taylors Lake Outfall Channel 34255	EC-I			
			Routine Asset Site Maintenance (214) Site Emergency Management Plan (406)	Utilities	GWM Water

VH	Toolondo 34040	HS-O			
	Grassfire from north to south		Crown Land Fuel Reduction (203 and 204) Roadside Vegetation Management (222) Fire Plug and Hydrant Installation and Maintenance (404) Patrol/Inspection (FPN) (303) Fire Access Tracks and Roads (416) Local Response Plans (420) Community Education/ Engagement (100) Fire Ready Victoria (107) Public Awareness (109) Hazard Identification (401) Emergency Management Plan (site) (406) Roadside Vegetation Management (223)	CFA Council Council Council DELWP CFA CFA CFA CFA Utilities Utilities RRV	
	Mount Talbot Homestead 34604	CH-NI			
			Routine Asset Site Maintenance (212)	Private	Victorian Heritage Register
	Toolondo Caravan Park 34024	HS-SFP	Routine Asset Site Maintenance (212) Site Emergency Management Plan (409)	Private	Leaseholder
	Toolondo Lake Outlet and Inlet Structure 3451792	EC-I			
			Routine Asset Site Maintenance (214) Site Emergency Management Plan (406)	Utilities	GWM Water
	Fulham 34605	CH-NI			
			Routine Asset Site Maintenance (212)	Private	Victorian Heritage Register

E	Wartook Valley 34050	HS-O			
	360 degree threat of grass and bushfire				
			Crown Land Fuel Reduction (203 and 204) Roadside Vegetation Management (222) Fire Plug and Hydrant Installation and Maintenance (404) Patrol/Inspection (FPN) (303) Fire Access Tracks and Roads (416) Local Response Plans (420) Community Education/ Engagement (100) Fire Ready Victoria (107) Public Awareness (109) Hazard Identification (401) Emergency Management Plan (site) (406) Roadside Vegetation Management (223)	CFA Council Council Council DELWP CFA CFA CFA CFA Utilities Utilities RRV	
	Wartook Pump Station 3451794	HS-O			
			Routine Asset Site Maintenance (214) Site Emergency Management Plan (406)	Utilities	GWM Water
	Asses Ears Wilderness Lodge 34051	HS-SFP			
			Routine Asset Site Maintenance (214) Site Emergency Management Plan (406)	Private	Owner
	Wartook Scouts Camp 34000	HS-SFP			
			Routine Asset Site Maintenance (214) Site Emergency Management Plan (406)	Private	Scouts Australia
	Grelco Run 34052	HS-SFP			
			Routine Asset Site Maintenance (214) Site Emergency Management Plan (406)	Private	Owner
H	Wonwondah North 34048	HS-O			

	Grassfire from any direction		Crown Land Fuel Reduction (203 and 204) Roadside Vegetation Management (222) Fire Plug and Hydrant Installation and Maintenance (404) Patrol/Inspection (FPN) (303) Fire Access Tracks and Roads (416) Local Response Plans (420) Community Education/ Engagement (100) Fire Ready Victoria (107) Public Awareness (109) Hazard Identification (401) Emergency Management Plan (site) (406) Roadside Vegetation Management (223) Emergency Water Supply (440)	CFA Council Council Council DELWP CFA CFA CFA CFA Utilities Utilities RRV Utilities	Brigade along creek and roadside; RRV Henty Highway, Council Roadsides as per Appendix. DELWP along creek. Wimmera Mallee Pipeline (Emergency Water Supply)
--	------------------------------	--	---	---	---

MUNICIPAL WIDE ASSETS

Grain Storage

	Silos and Grain Storage 34200	EC-C			
			Routine Asset Site Maintenance (214)	Private	Owner
	Moore Bulk Storage Grain Site 34264	EC-C			
			Routine Asset Site Maintenance (214)	Private	Owner

Highways

H	Western Highway 79209	EC-I			
			Roadside Vegetation Management (223)	RRV	
H	Wimmera Highway	EC-I			
			Roadside Vegetation Management (223)	RRV	New Addition

Railways

VH	Western SG Rail Line	EC-I			
			Routine Maintenance of Rail Line (210)	ARTC	

Power and Gas Infrastructure					
H	Charam Zone Substation	EC-I			
			Routine Asset Maintenance (214) Fuel Hazard Management (206) Hazard Identification (401) Emergency Management Plan (site) (406)	Utility	Need asset number
H	Horsham - Charam 66Kv Sub-Transmission Line 79202	EC-I			
			Routine Asset Maintenance (214) Fuel Hazard Management (206) Hazard Identification (401) Emergency Management Plan (site) (406)	Utility	
VH	Kanawinka Gas Substation 79206	EC-I			
			Routine Asset Maintenance (214) Fuel Hazard Management (206) Hazard Identification (401) Emergency Management Plan (site) (406)	Utility	
Communication Infrastructure					
VH	Apsley Telstra Exchange Tower	EC-I			
			Routine Asset Maintenance (214) Fuel Hazard Management (206) Hazard Identification (401) Emergency Management Plan (site) (406)	Utility	New Addition. Telstra?
VH	Edenhope Telstra Exchange Tower	EC-I			
			Routine Asset Maintenance (214) Fuel Hazard Management (206) Hazard Identification (401) Emergency Management Plan (site) (406)	Utility	

H	Goroke Telstra Exchange Tower	EC-I			
			Routine Asset Maintenance (214) Fuel Hazard Management (206) Hazard Identification (401) Emergency Management Plan (site) (406)	Utility	New Addition. Telstra?
H	Lawloit Telstra Exchange Tower	EC-I			
			Routine Asset Maintenance (214) Fuel Hazard Management (206) Hazard Identification (401) Emergency Management Plan (site) (406)	Utility	
M	Lilimur Telstra Exchange Tower	EC-I			
			Routine Asset Maintenance (214) Fuel Hazard Management (206) Hazard Identification (401) Emergency Management Plan (site) (406)	Utility	
Property Planning					
VH	Redtail Black Cockatoo 79400	EN-E			
			Planning Scheme environmental overlay (500)	Council	
VH	Bushfire Management Overlay	EN-E			
			Planning Scheme environmental overlay (500)	Council	
Community Events					
M	Apsley Cup	EC-TR			New Addition
M	Edenhope Cup 79213	EC-TR			
M	Henley on Lake Wallace 79213	EC-TR			
M	Harrow Billy Cart Races 79215	EC-TR			
M	Tussocks Jumpers B and B Ball 79214	EC-TR			

M	Kaniva Car and Bike Show79219	EC-TR			
M	Edenhope Ag Show	EC-TR			New Addition
M	Goroke Ag Show	EC-TR			New Addition
M	Kaniva Ag Show	EC-TR			New Addition
H	Lake Charlegrark Country Music Marathon 79208	EC-TR			

Table 11 Horsham Rural City Bushfire Asset Risk Management & Reporting Register

Appendix: D: Hazard Trees Identification and Notification Procedures

Procedures for Identification and Notification of Hazard Trees

Section 86 B of the Electricity Safety Act 1998 (Victoria) (ES Act) provides that a council must identify within its Municipal Fire Prevention Plan: procedures for the identification of trees that are hazardous to electric lines, specifying:

- procedures and criteria for the identification of trees that are likely to fall onto, or come into contact with, an electric line (hazard trees)
- procedures for the notification of responsible persons of trees that are hazard trees in relation to electric lines for which they are responsible

Under the ES Act, the person responsible for maintaining vegetation and clearance space around power lines is referred to as the “responsible person”.

The procedures outlined in this section of the Municipal Fire Management Plan seek to address the requirement detailed above.

Each responsible person should have its own internal procedure regarding the steps that will be taken when it receives notification of a potentially hazardous tree.

What is a hazard tree?

According to the ES Act, a hazard tree is a tree which “is likely to fall onto, or come into contact with, an electric line”.

The Electricity Safety (Electric Line Clearance) Regulations 2010 further provide that a responsible person may cut or remove such a tree ‘provided that the tree has been assessed by a suitably qualified arborist; and that assessment confirms the likelihood of contact with an electric line having regard to foreseeable local conditions.’

Due to legal requirements which require a clearance space be maintained around an electric line, hazard trees are usually located outside the regulated clearance space. Despite being outside the clearance space, the tree may still have the potential to contact the line due to its size or because of a structural fault or weakness which renders part, or all, of the tree likely to contact or fall onto the line.

Who is responsible for a hazard tree?

Under the ES Act, the person responsible for maintaining vegetation and clearance space around power lines, including keeping the whole or any part of a tree clear of the line, is the responsible person.

Responsibility is allocated between distribution businesses and other owners of electricity infrastructure, land owners and occupiers for clearance of private power lines, public land managers where they are identified as the responsible person such as municipal councils, the Department of Environment, Land, Water and Planning and VicRoads.

Municipal councils are responsible for trees on public land within their municipalities, for which they are the land manager, where these are

also within a Declared Area for the purposes of the ES Act. Primary responsibility for vegetation clearance and management within the municipality, for areas which are not within a Declared Area, will usually fall to the relevant electricity distribution company.

Responsible Persons within the Horsham Rural City Council

There are a number of organisations that have responsibility for line clearance in the Horsham Rural City Council, including:

- Powercor
- VicRoads

There is only one electricity distribution business in the Horsham Rural City Council and there are no Declared Areas under Section 81 of the ES Act that are the responsibility of the Council.

Other relevant information

Responsible persons, other than private persons, must have an electric line clearance management plan in place for areas for which they have responsibility (refer Electricity Safety (Electric Line Clearance) Regulations 2010).

Procedures and Criteria for Identification of Hazard Trees

In the course of everyday duties, potentially hazardous trees may come to the attention of staff or volunteer members of the entities with representation on the Municipal Fire Management Planning Committee, (the Committee), staff of the distribution business or other persons, including members of the public.

There are a range of factors which may indicate that a tree is a hazard tree. That is, a tree which is likely to fall onto, or come into contact with, an electric line. Some of these factors will be obvious when looking at the tree but many may only be apparent when the tree is assessed by a person with specific expertise and training, such as an arborist.

The following criteria may be used to assist in identifying a hazard tree:

- The size of the tree suggests that it is likely to come into contact with the electric line, for example because it appears to be encroaching or growing into the line clearance space
- There is an excessive lean on the tree, or branches hanging off the tree and the tree is in proximity to an electric (power) line
- The size or appearance of the tree suggests it could come into contact with the line including under foreseeable local conditions

If a potentially hazardous tree is identified, the notification procedure outlined below should be followed. Where a responsible person becomes aware of a potentially hazardous tree for which they have responsibility, they must follow their own applicable internal procedure and the notification procedure described below does not apply.

Procedures and Criteria for Notification of Hazard Trees

To ensure that information regarding potentially hazardous trees is captured in an efficient manner and, as appropriate, referred to the responsible person for action, the following procedure for the notification of hazardous trees should be followed:

- The person with responsibility for the highest percentage of lines within the municipality (the primary responsible person) is Powercor and therefore the person to whom potentially hazardous trees should be reported.
- Where any person becomes aware of, or receives a report of, a potentially hazardous tree within the municipality, this should be referred to Powercor. Where the Committee becomes aware of, or receives a report of, a potentially hazardous tree within the municipality, this must be referred to Powercor.
- Reports of potentially hazardous trees must be provided to Powercor for action as soon as practicable. Reports must include, as far as practicable:
 - The name and contact details and any relevant qualifications where known of the person making the report
 - As much detail as possible about the location of the tree (including, where known, GPS coordinates, details of numerical/name plate on nearest pole, name of nearest road or crossroads, closest landmark, whether tree is on private land or road reserve etc.)
 - A description of the tree (including, if known, the genus and species of tree);
 - The primary reasons given for the tree being identified as potentially hazardous (including, the tree is in proximity to an electric line and there is evidence of structural weakness, excessive lean, appears to be encroaching into line clearance space etc.)
 - An indication of whether or not urgent action is required
- Powercor must take all necessary steps to advise the person responsible for the tree that it may be hazardous where they are not the responsible person.

Primary Responsible Person Representative

For the purposes of this part of the Plan, the primary responsible person is Powercor. Contact details for Powercor are listed below:

Agency Name:	Powercor
Position title of contact person:	Hazard Tree Coordinator
Municipal Hazard Tree Notification Form:	powercor.com.au
Telephone number:	5338 3300 (Powercor' s Contractor VEMCO)
After hours number:	13 24 12

Table 12 Hazard tree notification contact details

1.1.1 Procedures for Notification of Responsible Persons

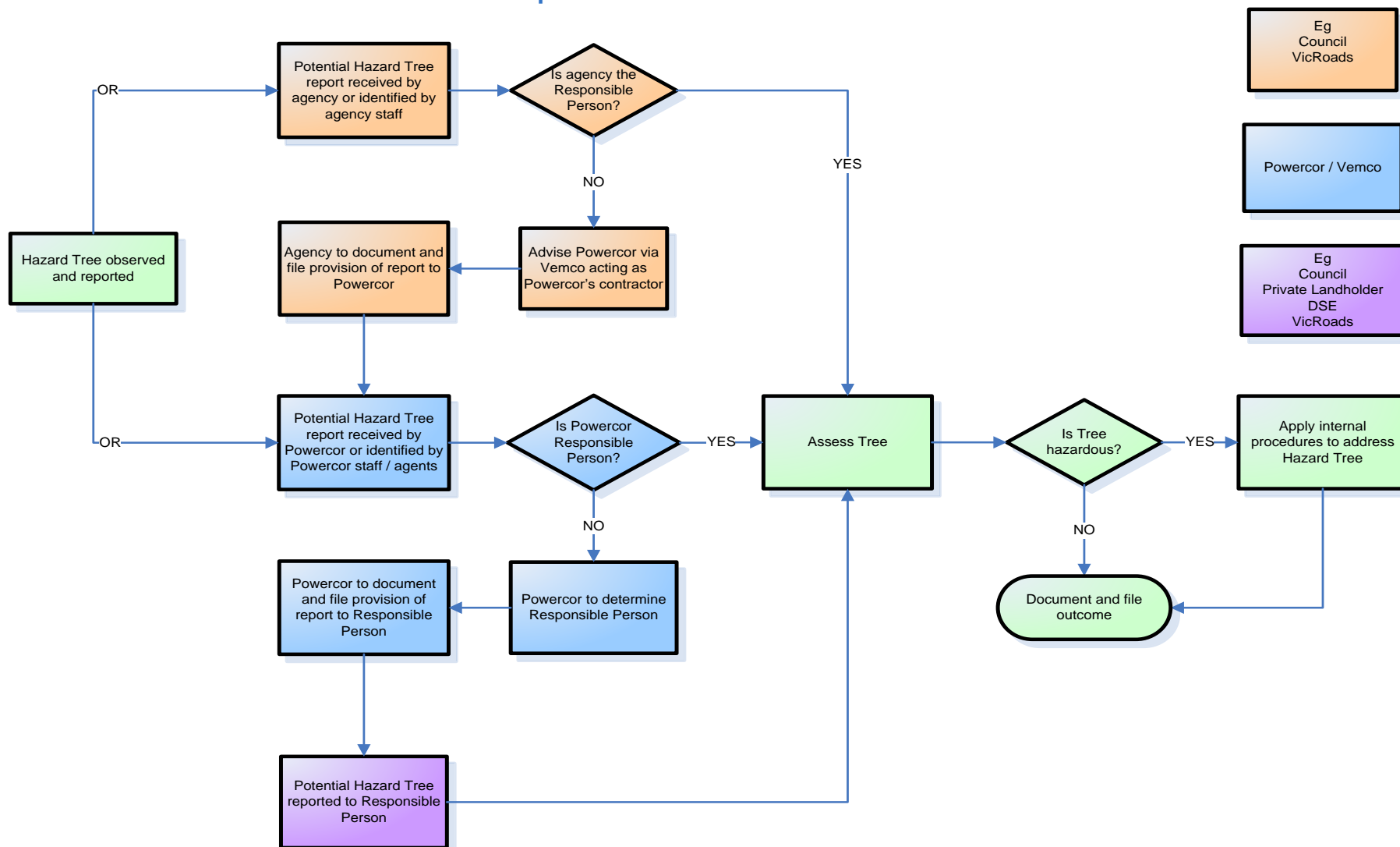


Figure 2 Hazard tree notification process

Reporting

Powercor and all responsible persons should put in place mutually agreed arrangements for the manner in which reports of potentially hazardous trees are passed on to responsible persons.

Reporting Timelines

Powercor should provide reports to the relevant responsible person as soon as practicable. In circumstances where:

- The potentially hazardous tree is located within a high bushfire risk area (as per Section 80 of the ES Act) and the potentially hazardous tree is reported during the fire danger period declared under the Country Fire Authority Act 1958
- The report indicates that there is an imminent danger that the tree will contact or fall onto lines as a result of minor environmental changes

The potentially hazardous tree must be referred to the relevant responsible person for action as soon as possible, and by close of the next business day.

Each responsible person (other than the primary responsible person) must provide Powercor with contact details of the person (position title) to whom reports should be provided. It is the responsibility of each responsible person to ensure that Powercor is provided with up-to-date contact details.

Register

It is recommended that Powercor maintain a register in which all notifications are recorded together with the date of receipt of the notification, and when applicable the date the notification was reported to the responsible person.

It is recommended that responsible persons also maintain a register of notifications received of hazardous trees for which they are the responsible person.

Primary Responsible Person Consultation

The Committee notes that Powercor as the Primary Responsible Person was consulted in relation to the development of these procedures.

Appendix E: Neighbourhood Safer Places

Neighbourhood Safer Places – Places of last Resort

There are three (3) Neighbourhood Safer Places – Places of last Resort in Horsham Rural City Municipality.

Horsham Rural City Municipality Neighbourhood Safer Places – Places of Last Resort		
Township/Suburb	Street	Location
Horsham	Cnr Hocking St & Firebrace St, Horsham	Sawyer Park
Laharum	Northern Grampians Road, Laharum	Laharum Football Ground (Cameron Oval)
Natimuk	Cnr Mitchell St & Jory St, Natimuk	Natimuk Showgrounds Recreation Reserve

Table 13 Horsham Rural City municipality Neighbourhood Safer Places - Places of Last Resort

For further information on maps refer to Horsham Rural City Community Map (horsham.pozi.com)

Appendix F: Horsham Rural City Municipal Boundary Map

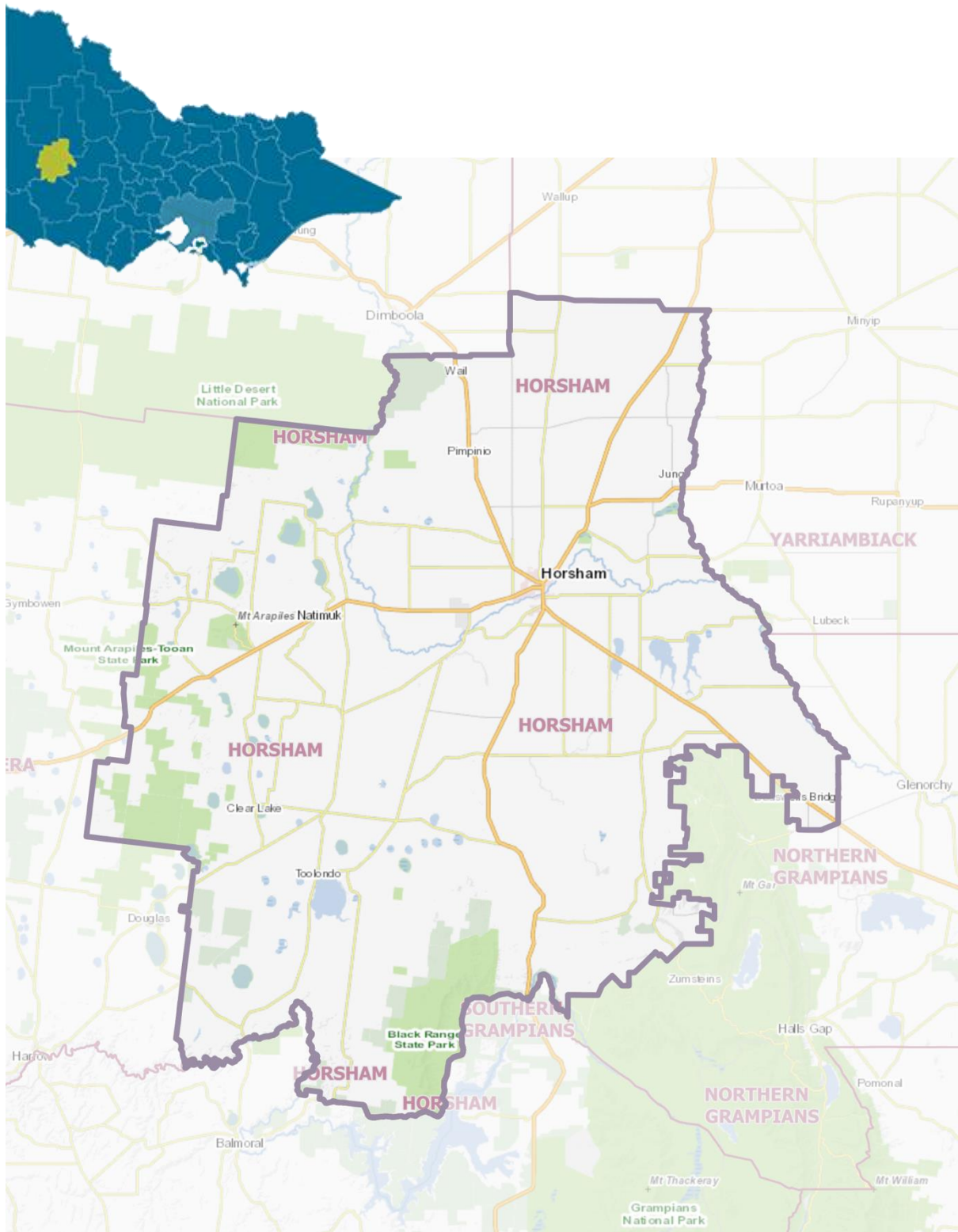


Figure 3 Horsham Rural City boundary map

For further information on maps refer to Horsham Rural City Community Map (horsham.pozi.com)

Appendix G: Strategic Fire Breaks

Strategic Fire Breaks – Horsham Rural City Municipality				
Road Name	From	To	Land Manager	Treatment
Strategic Fire Suppression Lines				
Berry Lane	Wyn Wyn Rd	Lake Ave	HRCC	Slash, Fence to Fence*
Curran Rd	Remlaw Rd	Wimmera Hwy (C240)	HRCC	Slash, Fence to Fence*
J Sudholzs Rd	Old Noradjuha Rd	Creekline	HRCC	Slash, Fence to Fence*
Wyn Wyn Rd	Natimuk-Frances Rd (C213)	Three Chain Rd	HRCC	Slash, Fence to Fence*

Table 14 Strategic fire breaks - fire suppression lines

Strategic Fire Breaks – Horsham Rural City Municipality				
Road Name	From	To	Land Manager	Treatment
Fire Control Lines				
Arapiles Grass Flat Rd	Natimuk-Frances Rd (C213)	Mitre Grass Flat Rd	HRCC	Slash & Spray 3m behind guide posts*
Arapiles Grass Flat Rd	Mitre Grass Flat Rd	Cooack Rd	HRCC	Spray 3m behind guide posts*
Bridge Rd/Mctavishs Rd	Staehrs Rd	Winfield Rd	HRCC	Slash, 1.8m cut behind guide posts*
Brimpaen-Laharum Rd	Henty Hwy (B200)	Northern Grampians Rd (C222)	HRCC	Graded & Spray 3m behind guide posts*

Strategic Fire Breaks – Horsham Rural City Municipality				
Road Name	From	To	Land Manager	Treatment
Fire Control Lines				
Camerons Rd Nth	Pryors Rd	Henty Hwy (B200)	HRCC	Slash, 1.8m cut behind guide posts*
Clear Lake– Sherwoods Dam Rd	Wimmera Hwy (C240)	Jallumba–Clear Lake Rd	HRCC	Slash & Spray 3m behind guide posts*
Cooack Rd	Shire Boundary	Meyers Rd	HRCC	Slash & Spray 3m behind guide posts*
Dimboola-Minyip Rd	Shire Boundary, Geodetic Rd	Shire Boundary, Yarriambiack Creek	HRCC	Slash & Spray 3m behind guide posts*
Drung-Jung Rd	Horsham-Lubeck Rd (C215)	Longerenong Rd	HRCC	Slash & Spray 3m behind guide posts*
Gatehouse Rd	Geodetic Rd	Horsham-Kalkee Rd	HRCC	Slash, 1.8m cut behind guide posts*
Golton Rd	Western Hwy (A8)	Horsham-Lubeck Rd (C215)	HRCC	Spray 3m behind guide posts*
Grahams Bridge Rd	Brimpaen-Laharum Rd	North East Wonwondah Rd	HRCC	Graded & Spray 3m behind guide posts*
Green Lake Rd	Western Hwy (A8)	Laharum Rd	HRCC	Spray 3m behind guide posts*
Greenhills Rd	Henty Hwy (B200)	Shire Boundary	HRCC	Graded & Spray 3m behind guide posts*
Harrow-Clear Lake Rd	Jallumba-Clear Lake Rd	Natimuk-Hamilton Rd (C214)	HRCC	Slash & Spray 3m behind guide posts*
Horsham-WalWal Rd	Western Hwy (A8)	Shire Boundary	HRCC	Spray, 3m behind guide posts*
Jacka Jacka Rd	Wimmera Hwy (C240)	Clear Lake-Sherwoods Dam Rd	HRCC	Graded & Spray 3m behind guide posts*

Strategic Fire Breaks – Horsham Rural City Municipality				
Road Name	From	To	Land Manager	Treatment
Fire Control Lines				
Jallumba-Clear Lake Rd	Natimuk-Hamilton Rd (C214)	Harrow-Clear Lake Rd	HRCC	Spray, 3m behind guide posts*
Jallumba-Mockinya Rd	Natimuk-Hamilton Rd (C214)	Henty Hwy (B200)	HRCC	Slash & Spray 3m behind guide posts*
Jaspers La	Wombelano Rd	Elliotts Back La	HRCC	Slash, 1.8m cut behind guide posts*
Jung North Rd	Wimmera Hwy (C240)	Horsham-Minyip Rd (C236)	HRCC	Spray, 3m behind guide posts*
Kalkee East Rd	Horsham Kalkee Rd	Henty Hwy (B200)	HRCC	Slash & Spray 3m behind guide posts*
Kalkee Rd	Wail-Dooen Rd	Horsham-Kalkee Rd	HRCC	Slash & Spray 3m behind guide posts*
Laharum Rd	Western Hwy (A8)	Northern Grampians Rd	HRCC	Slash & Spray 3m behind guide posts*
Laidlows Rd	Horsham-Kalkee Rd	Henty Hwy (B200)	HRCC	Slash & Spray 3m behind guide posts*
Lake Rd, Natimuk	Meyers Rd	Natimuk Township	HRCC	Slash & Spray 3m behind guide posts*
Longerenong Rd	Henty Hwy (B200)	Drung-Jung Rd	HRCC	Slash & Spray 3m behind guide posts*
Mitre-Nurcoung Rd	Natimuk-Frances Rd (C213)	McReddens Rd	HRCC	Spray, 3m behind guide posts*
North East Wonwondah Rd	Henty Hwy (B200)	Laharum Rd	HRCC	Slash & Spray 3m behind guide posts*
Northfields Wool Shed Rd	Wash Tomorrow Rd	Roy Blakes Rd	HRCC	Graded

Strategic Fire Breaks – Horsham Rural City Municipality				
Road Name	From	To	Land Manager	Treatment
Fire Control Lines				
O'Brees Rd	Polkemmet Rd	Western Hwy (A8)	HRCC	Slash & Spray 3m behind guide posts*
Old Hamilton Rd	Henty Hwy (A8)	Mackies Rd	HRCC	Slash & Spray 3m behind guide posts*
Plush Hannans Rd	Horsham-Noradjuha Rd (C214)	Henty Hwy (B200)	HRCC	Slash & Spray 3m behind guide posts*
Polkemmet Rd	Wimmera Hwy (C240)	Western Hwy (A8)	HRCC	Spray, 3m behind guide posts*
Rasmussen Rd	Horsham-Kalkee Rd	Wimmera River	HRCC	Slash, 1.8m cut behind guide posts*
Rees Rd	Talangatuk-East Rocklands Rd	Black Range State Forest	HRCC	Spray, 3m behind guide posts*
Remlaw Station Rd	Wimmera Hwy (C240)	Polkemmet Rd	HRCC	Slash, 1.8m cut behind guide posts*
Riverside Rd	Wimmera River	Rogersons Rd	HRCC	Slash, 1.8m cut behind guide posts*
Rules West Rd/Rules East Rd	Western Hwy (A8)	Horsham-Kalkee Rd	HRCC	Slash & Spray 3m behind guide posts*
Talangatuk-East Rocklands Rd	Rocklands Rd	Wonwondah-Toolondo Rd	HRCC	Slash & Spray 3m behind guide posts*
Tooan-Mitre Rd	Wimmera Hwy (C240)	Natimuk-Frances Rd	HRCC	Slash, 1.8m cut behind guide posts*
Victoria Valley Rd	Brimpaen-Laharum Rd	Geranium Springs Rd	HRCC	Spray, 3m behind guide posts*

Strategic Fire Breaks – Horsham Rural City Municipality				
Road Name	From	To	Land Manager	Treatment
Fire Control Lines				
Wail-Dooen Rd	Wail	Dooen	HRCC	Graded & Spray, 3m behind guide posts*
Wail-Polkemmet Rd	Polkemmet Rd	Wail	HRCC	Graded
West Wail Rd	Pimpinio	Shire Boundary	HRCC	Slash & Spray 3m behind guide posts*
Wombelano Rd	Natimuk-Hamilton Rd (C214)	McKechies Rd	HRCC	Slash & Spray 3m behind guide posts*
Wonwondah-Dadswells Bridge Rd	Northern Grampians Rd (C222)	Western Hwy (A8)	HRCC	Spray, 3m behind guide posts*
Wonwondah-Toolondo Rd	Natimuk-Hamilton Rd (C214)	Jallumba-Mockinya Rd	HRCC	Spray, 3m behind guide posts*
Blue Ribbon Rd (C231)	Dimboola-Minyip Rd	Horsham	VicRoads	Slash, 3m cut behind guide posts*
Henty Hwy (B200)	Dimboola-Minyip Rd	Shire Boundary, Rocklands-Cherrypool Rd	VicRoads	Slash, 3m cut behind guide posts*
Horsham-Lubeck/Drung Rd (C215)	Cameron Rd, Horsham	Shire Boundary, Mt William Creek	VicRoads	Slash & Spray, 3m behind guide posts*
Horsham-Minyip Rd (C236)	Henty Hwy (B200)	Shire Boundary	VicRoads	Slash, 3m cut behind guide posts*
Horsham Noradjuha Rd (C214)	Wimmera Hwy (C240)	Noradjuha	VicRoads	Slash, 3m cut behind guide posts*

Strategic Fire Breaks – Horsham Rural City Municipality				
Road Name	From	To	Land Manager	Treatment
Fire Control Lines				
Natimuk-Frances Rd (C213)	Wimmera Hwy (C240)	Shire Boundary, McLure Bush Reserve	VicRoads	Slash & Spray, 3m behind guide posts*
Natimuk-Hamilton Rd (C214)	Noradjuha	Shire Boundary, Glenelg River	VicRoads	Slash, 3m cut behind guide posts*
Northern Grampians Rd (C222)	Wartook	Western Hwy (A8)	VicRoads	Slash, 3m cut behind guide posts*
Western Hwy (A8)	Shire Boundary, Wail	Shire Boundary, Dadswells Bridge	VicRoads	Slash, 3m cut behind guide posts*
Wimmera Hwy (C240)	Shire Boundary, Jung	Shire Boundary Jilpanger Rd	VicRoads	Slash, 3m cut behind guide posts*

Table 15 Strategic fire breaks - fire control lines

Strategic Fire Breaks – Horsham Rural City Municipality					
Road Name	From	To	Brigade	Treatment	Road Authority
CFA Brigade Works					
Brimpaen Laharum Rd	Henty Hwy (A200)	Schmidt's Rd	Brimpaen	Burn	HRCC
Scotts Hairs Watsons Rd	East from Harrow-Clear Lake Rd	End of Road	Clear Lake	Burn	HRCC
Harrow-Clear Lake Rd	Jallumba-Clear Lake Rd	Jallumba-Douglas Rd	Clear Lake	Burn	HRCC
Clear Lake-Sherwoods Dam Rd	Jallumba Rd	K Emmersons Rd	Clear Lake	Burn	HRCC
Harrow-Clear Lake Rd Town Service Rd	Parallel to Main Rd west side of town between Bow Lake Rd	Elliot's Rd	Clear Lake	Burn	HRCC
Clear Lake Recreation Reserve	Sherwoods Dam Rd		Clear Lake	Burn	HRCC
J Emmersons Rd	West from Sherwoods Dam Rd	End of Road	Clear Lake	Burn	HRCC
Emmerson Rd	West from Sherwoods Dam Rd	End of Road	Clear Lake	Burn	HRCC
Jallumba-Clear Lake Rd	Jackmans Rd	Jallumba	Clear Lake	Burn	HRCC
ARTC Rail Line	Wail-Dooen Rd	Wimmera Hwy	Dooen	Burn	ARTC
Cooack Rd – Quades Rd	600m west & north from the intersection		Grass Flat	Plough	HRCC

Strategic Fire Breaks – Horsham Rural City Municipality					
Road Name	From	To	Brigade	Treatment	Road Authority
CFA Brigade Works					
Lake Rd	South from Cooack Rd	Meyers Rd	Grass Flat	Plough	HRCC
Dock Lake Recreation Reserve & Western Hwy	Highway in front of recreation area	Recreation Reserve Area	Green Lake	Burn	HRCC
Taylors Lake	Foreshore area, parallel to Fishers Rd from Whites Rd	Watsons Rd	Green Lake	Burn	HRCC
Community Hall	Cnr Fishers & Horsham –Lubeck Rd Rd		Green Lake	Burn	HRCC
Henty Hwy (B200)	Rasmussen Rd	Aerodrome Rd	Horsham	Burn	VicRoads
ARTC Railway Line & Yards	Yarriambiack Creek	Tuckers Rd	Jung	Burn	ARTC
Wonwondah-Dadswells Bridge Rd	Intersection with Northern Grampians Rd	Intersection only	Laharum	Burn	HRCC
Northern Grampians Rd	Strip burns approx.. 150m long in front of the Laharum Oval, Public Hall, Tennis Courts and Fire Station		Laharum	Burn	VicRoads
McCreddens Rd	Mitre-Nurcoung Rd north around Connan Swamp	Grid Point 670401	Mitre	Spray	HRCC

Strategic Fire Breaks – Horsham Rural City Municipality					
Road Name	From	To	Brigade	Treatment	Road Authority
CFA Brigade Works					
Mitre-Nurcoung Rd – McCreddens Rd	East-west behind Greenhill Lake	North along McCreddens Rd for 500m	Mitre	Burn	HRCC
Mitre-Nurcoung Rd – Webbs Rd – Mitre-Grass Flat Rd	North of Mitre	500m north of Webb Rd and Mitre-Grass Flat Rd intersection	Mitre	Plough	HRCC
Disused Rail Corridor	Between Lears Rd	Natimuk-Frances Rd (C213)	Mitre	Plough	HRCC
McLures Rd	Between 465	515	Mitre	Plough	HRCC
Isacsons R – C213 – Toonan Duffholme Rd	North from Rail Corridor along C213 then along Toonan Rd	Mt Arapiles SP	Mitre	Plough	HRCC
Mitre-Grass Flat Rd	Natimuk-Frances Rd (C213)	North for 600m	Mitre	Spray	HRCC
Natimuk-Frances Rd (C213)	200m east of Mitre Fire Station	1.5km	Mitre	Plough	VicRoads
Natimuk-Frances Rd (C213)	Mitre Fire Station – 150m either side		Mitre	Spray	VicRoads
Mitre-Grass Flat Rd	From intersection with C213 north for 600metres		Mitre	Spray	HRCC
Keytes Rd – Three Chain Rd – Lake Ave	Natimuk-Frances Rd (C213)	Ford Boat Ramp – Lake Natimuk	Natimuk	Plough	HRCC

Strategic Fire Breaks – Horsham Rural City Municipality					
Road Name	From	To	Brigade	Treatment	Road Authority
CFA Brigade Works					
Gladigau Rd	Wimmera Hwy (C240)	Creek Rd	Natimuk	Spray	HRCC
Sudholz Rd	Creek Rd	Natimuk-Hamilton Rd (C219)	Natimuk	Slash	HRCC
Jacka Jacka Rd	Wimmera Hwy (C240)	Clear Lake-Sherwoods Dam Rd	Natimuk	Plough	HRCC
Natimuk Cemetery Rd	Full length of road		Natimuk	Plough	HRCC
Polkemmet Rd	Meyers La	Wimmera Hwy (C240)	Natimuk	Plough	HRCC
Arapiles La – Arapiles School	Centenary Park Rd	Natimuk-Frances Rd (C213)	Natimuk	Slash	HRCC
Langes La	Natimuk-Frances Rd (C213)	Wimmera Hwy (C240)	Natimuk	Slash	HRCC
Natimuk-Hamilton Rd Rail Corridor	Hateleys Rd	Sudholzs Rd	Natimuk	Burn	VicRoads
Langes Lane	Natimuk-Frances Rd (C213)	Wimmera Hwy (C240)	Natimuk	Slash	HRCC
Northfields Rd	Natimuk-Hamilton Rd (C219)	Darragan Pit Rd	Noradjuha	Slash	HRCC
Natimuk-Hamilton Rd (C219)	Northfields Rd	Nurrabiel Church Rd	Noradjuha	Burn	HRCC

Strategic Fire Breaks – Horsham Rural City Municipality					
Road Name	From	To	Brigade	Treatment	Road Authority
CFA Brigade Works					
Rifle Butts Rd	H Scotts Rd	Lower Norton-Nurrabiel Rd	Noradjuha	Burn	HRCC
Horsham-Noradjuha Rd (C214)	Noradjuha Township speed restriction signs	Carmichaels Rd – east side	Noradjuha	Burn	VicRoads
Plowrights Rd	Moore Rd	Drendels Rd	Pimpinio	Plough	HRCC
Dahlen Quarry Rd	Western Hwy (A8)	Walsh's Rd	Pimpinio	Plough	HRCC
Blue Ribbon Rd (C231)	Aerodrome Rd	Jenkinson Rd	Pimpinio	Plough	HRCC
Bakers Rd	Wail-Dooen Rd	Geodetic Rd	Pimpinio	Plough	HRCC
Blue Ribbon Rd (C231)	Banyena Rd	Reynolds Rd	Pimpinio	Plough	HRCC
Wail-Polkemmet Rd	Reinheimers Rd	West Wail FFR	Pimpinio	Plough	HRCC
Banyena Rd	Wail-Dooen Rd	Verahad Swamp Rd	Pimpinio	Plough	HRCC
Wail-Dooen Rd	Banyena Rd	Lawsons Rd	Pimpinio	Plough	HRCC
Wail-Dooen Rd	Hennesseys Rd	Reynolds Rd	Pimpinio	Plough	HRCC
Wail-Kalkee Rd	Wail-Dooen Rd	Geodetic Rd	Pimpinio	Plough	HRCC
Robins Rd	Barbers Rd	Wail	Pimpinio	Plough	HRCC
Wail-Polkemmet Rd	West Wail Rd	Riggs Rd	Pimpinio	Plough	HRCC
Wail West Rd	Buloke Rd	Bartlett Rd	Pimpinio	Plough	HRCC

Strategic Fire Breaks – Horsham Rural City Municipality					
Road Name	From	To	Brigade	Treatment	Road Authority
CFA Brigade Works					
Western Hwy (A8)	Pimpinio	Beddinsons Rd	Pimpinio	Plough	VicRoads
Kanagulk Siding	Parallel to Natimuk-Hamilton Rd (C214) for 400m	Siding area	Telangatuk	Burn	HRCC
Natimuk-Hamilton Rd (C214)	Derwent La	Wombelano Rd	Telagatuk	Burn	VicRoads
Peppertree La	Mt Talbot Rd	Natimuk-Hamilton Rd (C214)	Toolondo	Plough	HRCC
Jenzs La	Peppertree La	Jallumba-Douglas Rd	Toolondo	Plough	HRCC
Mt Talbot Rd	Jallumba-Douglas Rd	Digger Jims Rd	Toolondo	Plough	HRCC
Natimuk-Hamilton Rd (C214)	Peppertree La	Jeffries Rd	Toolondo	Burn	HRCC
Toolondo Gun Club Rd	Natimuk-Hamilton Rd (C214)	Grid Point 853094	Toolondo	Plough	HRCC
Natimuk-Hamilton Rd (C214)	Peppertree La	Jeffries Rd	Toolondo	Burn	VicRoads
Natimuk-Hamilton Rd (C214)	Grid Point 893103	Toolondo Gun Club Rd	Toolondo	Plough	VicRoads
Remlaw Rd (Rail Reserve)	Curran Rd	Grid Point 670401	Vectis	Burn	VicTrack

Strategic Fire Breaks – Horsham Rural City Municipality					
Road Name	From	To	Brigade	Treatment	Road Authority
CFA Brigade Works					
Asplins Rd	Wimmera Hwy (C240)	Lanes Ave	Vectis	Burn	HRCC
Wimmera Hwy	Curran Rd	Remlaw Station Rd	Vectis	Burn	HRCC
Toolondo Rd – North East Wonwondah Rd	Lanes Rd on the south side	Wonwondah then north side from Wonwondah to Grahams Bridge Rd	Wonwondah	Burn	HRCC
Rifle Butts Rd	Henty Hwy (A200)	Bothes Rd South, north side	Wonwondah	Burn	HRCC
Tyers Rd	Henty Hwy (A200) west for 400m	End of road	Wonwondah	Burn	HRCC
Walshs Rd	Plush Hannan's Rd	Smith Rd	Wonwondah	Burn	HRCC
Plush Hannan's Rd	Walshs Rd	Henty Hwy (A200)	Wonwondah	Burn	HRCC
Nixon Rd South	Wonwondah Rd	Rocklands Channel	Wonwondah	Burn	HRCC
Henty Hwy (A200)	Nixons Rd	1.2km north of Butlers Rd on the east side	Wonwondah	Burn	VicRoads

Table 16 Strategic fire breaks - CFA brigade works

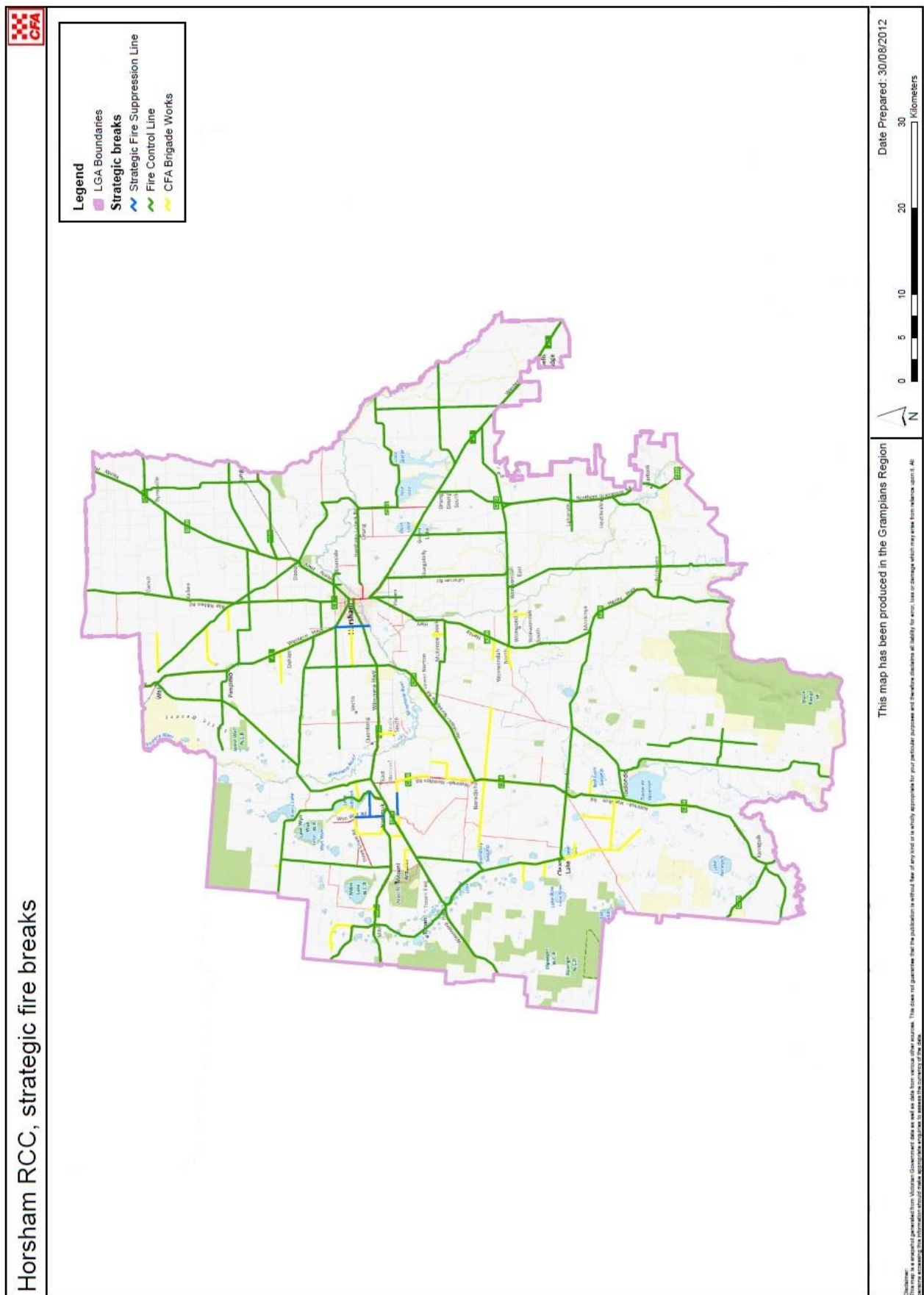


Figure 4 Map of Horsham Rural City strategic fire breaks

Appendix H: Documents and Links

Neighbouring Municipal Fire Management Plans

- [Hindmarsh Shire Council](#)
- [West Wimmera Shire Council](#)
- [Mildura Rural City Council](#)
- [Yarriambiack Shire Council](#)

Useful Municipal and Agency Links

[Horsham Rural City Community Map](#) shows fire water points and other information under the emergency services tab.

[Horsham Rural City Municipal Emergency Management Plan](#)

[Country Fire Authority](#)

[Dept of Justice and Regulation - Victoria](#)

[Emergency Management Victoria](#)

[Fire and Emergency Management Planning Portal](#) (restricted access)

[Dept of Environment, Land, Water and Planning - Victoria](#)

[Vic Emergency](#)

Local Fire Management Plans & Arrangements

Note: These plans may not be publicly available and the agency responsible should be consulted about access

- Little Desert Emergency Management Plan, Parks Victoria
- Western Goldfields Emergency Management Plan – Parks Victoria
- CFA Districts 17, Groups and Local Brigade Plans

Regional Fire Management Plans & Arrangements

- [Grampians Regional Strategic Fire Management Plan V2 \(2011\)](#) (restricted access)
- [Wimmera Catchment Management Authority Regional Strategy](#)
- [Forest Fire Management Victoria - Wimmera and Mallee District Plans](#)

State Fire Management Plans & Arrangements

[State Bushfire Plan 2014](#)

[Dept of Education – Victoria; School Emergency Management Planning](#)

[Emergency Management Victoria – Fire Management Planning](#)

Site Specific Fire Management Plans & Arrangements

[Powercor Bushfire Mitigation Strategy](#)

[SP Ausnet Bushfire Mitigation Strategy](#)

[VicRoads – Roadside Fire Management](#)

- End of Document -