

HORSHAM NORTH

DRAFT ISSUES + OPPORTUNITIES PAPER

SUMMARY

Why have we created a Draft Issues and Opportunities Paper for Horsham North?

The Draft Issues and Opportunities Paper for Horsham North is based on a review of the issues, opportunities, strategies and actions that were identified in the Horsham North Urban Design Framework (UDF), adopted by Council in 2013.

The purpose of the document and current project is to bring forward the issues and opportunities set out in the Horsham North UDF and to reinterpret the “Directions” and “Actions” of the UDF under a new set of themes, an expanded study area, and to also identify new opportunities that could improve the urban environment of Horsham North.

The issues and opportunities are being presented to the community and feedback will inform the development of a Local Area Plan for Horsham North, which will provide an implementation plan for the actions identified. The Horsham North Local Area Plan will align with current Council strategies and projects, and will also support future changes to the Horsham Planning Scheme.

What are some of the key issues that have been identified for Horsham North?

Some of the key issues identified within the Horsham North Urban Design Framework (UDF) included:

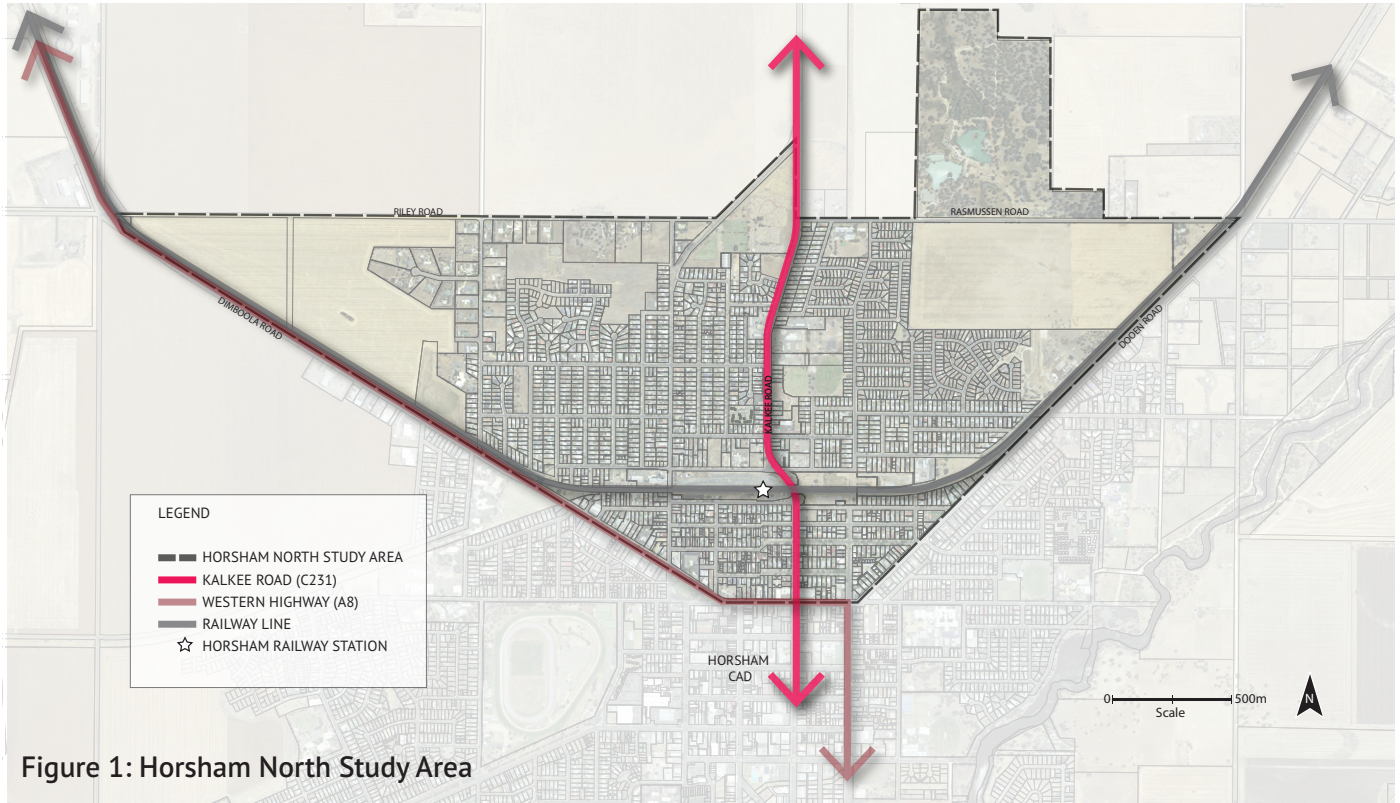
- Pedestrian access and connectivity, which is heavily influenced by the Horsham rail corridor and lack of safe and accessible pedestrian connections across or under the railway line;
- Some poorly designed and/or located areas of open space; and
- Large areas of under-utilised land (in addition to the rail corridor) contributing to the “negative image” of the area that was identified in the UDF, and through previous community feedback.

Following on from that work, we have identified that a number of those issues are unresolved and require further investigation and action, such as:

- Exploring options to connect both sides of the railway line through DDA compliant pedestrian connections;
- Improving the connections to and through parks;
- Identifying opportunities for new open space;
- Transforming the railway corridor for public use;
- Using the Silo Art project as a first step in improving the image of Horsham North; and
- Working with developers to deliver improved subdivisions and open space (parks).

Where is the Study Area for the project?

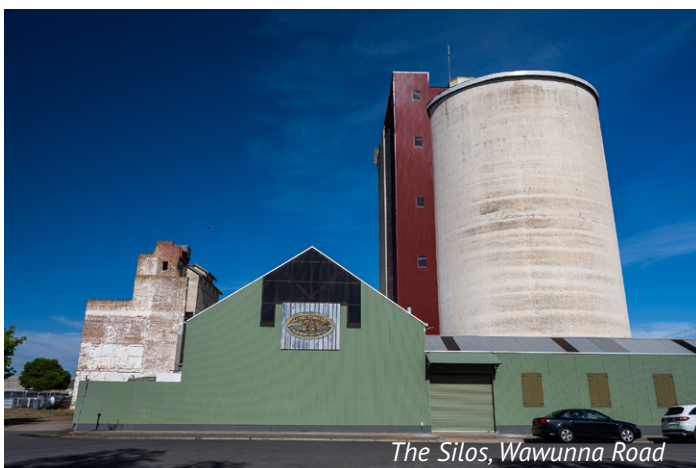
The study area is generally bounded by Dimboola, Dooen, Rasmussen and Riley Roads, and also Baillie Street. Whilst “Horsham North” was previously identified as the area to the north of (and including) the rail corridor, the project has extended the study area so that a more comprehensive analysis can be undertaken. Some of the key connections extend southward towards the town centre and the project is intended to address and enhance pedestrian and cyclist connectivity, wherever possible.



What are some of the key features across the study area?

Some the key features across the study area include:

- The Police Paddock to the north
- The rail corridor and Horsham Railway Station
- Predominantly residential streets
- Areas of current and former industrial activity
- The silos on Wawunna Road which will soon be painted through the Silo Art project
- Dudley Cornell Reserve



What's in the Draft Issues and Opportunities Paper ?

The Draft Issues and Opportunities Paper is made up of four (4) Parts:

Part 1: Introduction

Part 1 provides an introduction to the project and makes reference to the Horsham North Urban Design Framework (2013), Council's strategic framework (Council strategies), the Horsham Planning Scheme, and the Urban Design Guidelines for Victoria (a state government produced set of guidelines to assist developers, Councils and state government agencies, achieve more liveable and attractive urban environments).

Part 2: Land Use + Planning

Part 2 discusses the current land use that occurs in Horsham North in terms of the residential areas, commercial and industrial areas, and the character of the area. This analysis will assist in determining whether future changes to land use will be required (through planning scheme changes).

Part 3: Access + Connectivity

Part 3 discusses access and connectivity (how people get around) in terms of the streets, footpaths and connections across the rail corridor. We know that the rail corridor presents a significant barrier for pedestrians, cyclists and other forms of transport, including mobility scooters which should be considered in future planning for the area.

Part 4: Public Spaces

Part 4 discusses the parks and other public spaces throughout Horsham North, identifying some of the issues and opportunities to improve public spaces throughout the area. Parks should be safe, inviting, and attractive, user-friendly spaces, with good pedestrian connections.



Horsham Rail Corridor

Planning + Land Use

Planning for future land use will be based on the existing land use pattern within the area and understanding the future needs of the Horsham North community in terms of housing, community facilities and services, convenience retail and commercial activity, and also the need to facilitate urban renewal opportunities as a catalyst for positive change within the area.

Key Issues + Opportunities

Future housing opportunities

Urban renewal through infill development

Improve the appearance and function of under-utilised land

Plan for future subdivisions

Identify opportunities for sporting facilities and community infrastructure

Celebrate urban character and heritage



Houses along Railway Terrace

Access + Connectivity

The Horsham North UDF identified a number of current issues that influence and affect walkability, cycling and the overall movement network including public transport and vehicle movement. The socio-economic context of Horsham North highlights the need to improve and enhance access and connectivity across the area, particularly across the rail corridor but also to areas of public open space, community facilities and to promote physical activity and community well-being.

Key Issues + Opportunities

Improved connections to and through open space

Promote and facilitate walkability

Improved the cycling and shared path network

Activate the rail corridor & facilitate connectivity

Improve the design & connectivity of new subdivisions

Plan for future redevelopment areas (subdivisions)



Horsham Railway Station

Public Spaces

Public open space (parks and reserves) in Horsham North suffers from a range of issues that vary from park to park, which significantly affect the useability and perception of each space. Relatively poor passive surveillance of some of these spaces is the result of past subdivision designs that place parks at the back of, or in between, the rear fences of residential properties and without appropriate street frontages, or along logical pedestrian routes. Parks are often connected by cul-de-sacs and, therefore, are not part a well-connected pedestrian network.

Key Issues + Opportunities

Increase the provision of open space

Improve the design & quality of new open space

Re-design / re-configure existing parks

Apply the Urban Design Guidelines for Victoria

Public realm improvement/activation

Silo Art Project (public realm activation)

Increase tree planting and canopy cover



Dudley Cornell Reserve

What do we want to hear from the Horsham North community?

The short answer is anything you want to tell us.

As this is your local area, we want to hear your thoughts on what should be improved, or what is missing in the area.

Council has undertaken some work and is now seeking feedback from the community in order to develop a Local Area Plan for Horsham North, that reflects the community's aspirations and that Council can deliver upon through an implementation plan.

Of course, there are limits and constraints, which is why the Draft Issues and Opportunities Paper provides a basis from which to start the discussion with the community and to work towards some achievable goals for the area, over the short, medium and longer term.



Street trees on Wavell Street



Horsham Rural City
Council where the land matters