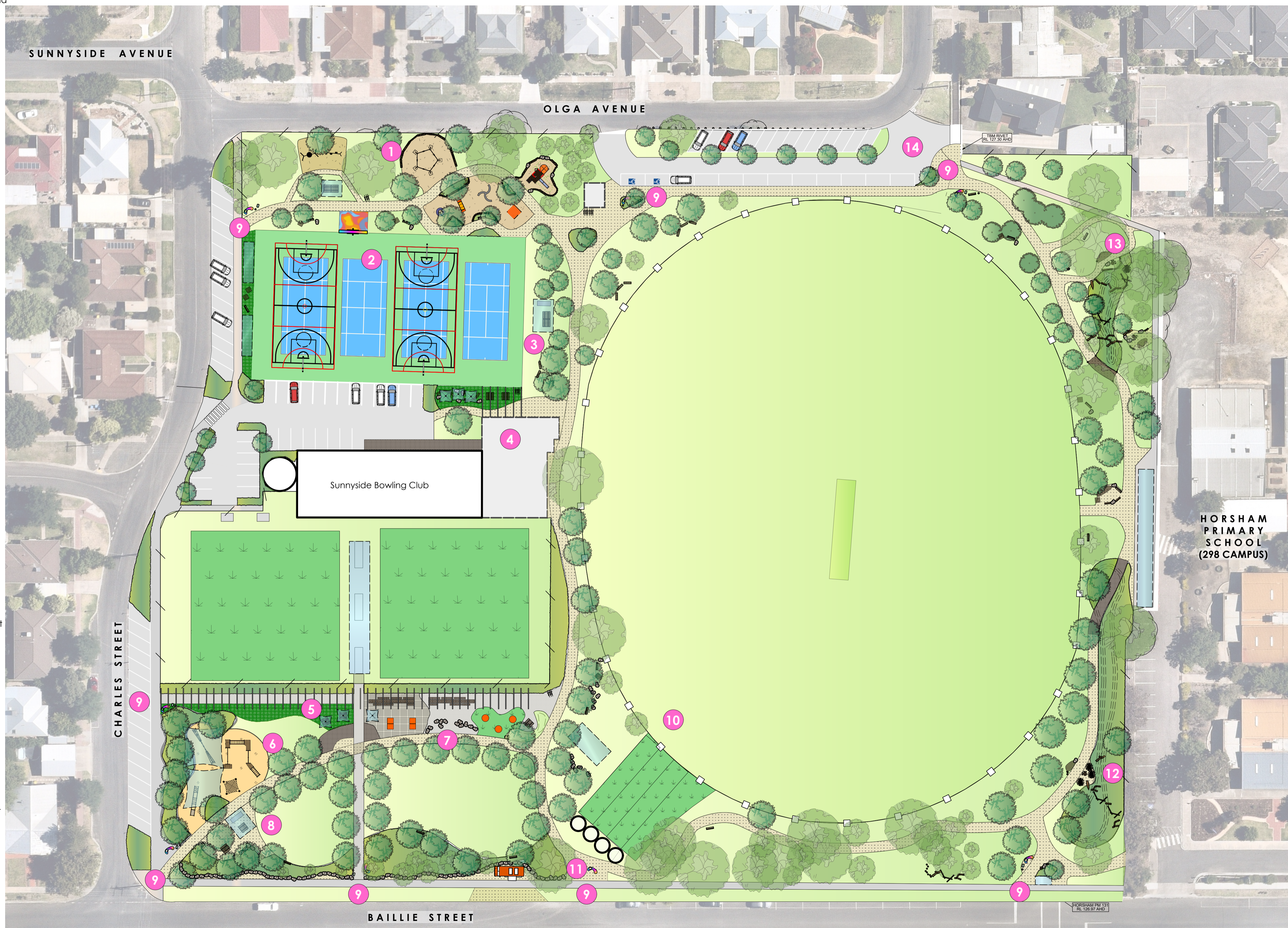


SUNNYSIDE PARK - THE VILLAGE VIBE - COMMUNITY, PLAY & RELAX

- 1 **Playspace** - support active participation and involvement in the play space by including a diverse range of play opportunities suited to a range of ages and abilities.
- 2 **Multi-use Courts** - extend existing court surface to support an additional tennis court plus multi-use line marking - including for basketball & netball. Include reversible goals for netball/ basketball and additional basketball goals on reverse side of down ball. Opportunity for art interpretation of existing concrete pad & downball wall
- 3 **Gathering Areas** - provision of a variety of gathering & viewing areas amongst a parkland setting. Designed to view both court and oval based games. Include shade/ shelter. Relocate existing water storage tanks to south of cricket nets.
- 4 **Clubrooms/ viewing area** - opportunity to develop a brief to liaise with Sunnyside Bowling Club to combine storage, change room, toilet, access and social provisions whilst creating a viewing platform with shade
- 5 **Viewing & gathering** - provision of social gathering areas, sessional spaces, shade, seating and low growing plants - ensure any trees are a minimum ten metres from existing bowling greens
- 6 **Sensory & Recreational Activities** - provision of social inclusive play activities that offer opportunities for multi-generational user groups - opportunity to develop specific equipment with engagement directly with local health services
- 7 **Viewing & gathering** - Provision of gathering, interesting pavement selection and shade with green climbers. Include playful social elements such as table tennis tables, inground trampolines and stage. Ensure any trees are a minimum of 10 metres from existing bowling greens
- 8 **Gathering / open lawn area** - provision of a shelter with BBQ facilities, gathering & shade trees in parkland open lawn setting.
- 9 **Entrances** - can include a combination of interpretive signage, water refill station, seating, dog bags, soft landscaping and art elements of interpretive history
- 10 **Sunnyside Oval** - continuing improvements to irrigation, turf, lighting and boundary treatment. Potential additional practice net
- 11 **Hard stand area** - provision of a cafe/gelato food van standing pad with access from maintenance entrance
- 12 **Nature Play** - create a meandering granitic gravel path with landforming (equal cut & fill) to enhance existing drainage line/ swale, work with WSUD principles, incorporate nature play elements to support self-directed play, with natural elements to support balance skills, vestibular and creative play. Incorporate a broad range of indigenous planting to support local biodiversity.
- 13 **Gathering Area / Outdoor Learning Area** - provide connecting paths and compliment adjacent school use with a free-form outdoor learning area - include free form deck seat/ platforms, log blocks and log seats under the shade of the existing trees
- 14 **Carpark** - opportunity to design carparking to provide onstreet parking as on Charles Street and drop off parallel parking within the reserve. Ensure pedestrian access is provided



LEGEND

- BUILDING LAYOUT
- BOUNDARY FENCELINE
- EXISTING TREES TO BE RETAINED AND PROTECTED
- PROPOSED TREES
- PROPOSED GARDEN BEDS
- LAWN (IRRIGATED)
- ASPHALT SURFACE
- CONCRETE PAVING
- UNIT PAVING
- FEATURE PAVING
- COMPACTED GRANITIC SAND SURFACE
- SYNTHETIC GRASS CARPET (NON-IMPACT ATTENUATING)
- ACRYLIC SURFACE WITH LINEMARKING
- PLAYGROUND MULCH (IMPACT ATTENUATING TO AS 4422)
- WETPOUR SYNTHETIC SURFACE (IMPACT ATTENUATING TO AS4422)
- POROUS PAVING
- ROCK EDGING
- TIMBER LOG EDGING
- FEATURE TIMBER LOG
- VERTICAL LOG EDGING
- TIMBER DECKING
- TABLE TENNIS TABLE
- INGROUND TRAMPOLINE
- PERGOLA
- TIMBER DECKING
- TIMBER BALANCE, PLAY & HELPER
- INTERPRETIVE ART ELEMENTS
- INCLUSIVE WATER REFILL STATIONS
- DOG BAGS
- SHADE ELEMENTS
- ACCESSIBLE BBQ FACILITIES
- BICYCLE STORAGE FACILITIES
- LIGHTING

Sunnyside Park - Landscape Concept Layout

Sunnyside Park

Baillie Street HORSHAM 3400

30.11.2021 **FOR COMMENT**
PN 207

PO Box 765 HORSHAM VIC 3402
041 041 2440
felicity@laimiga.com.au
Note: This is a concept design drawing and not a working drawing. It is not to be used for construction purposes. Levels and dimensions are approximate only. This drawing remains the property of the Landscape Architect. COPYRIGHT/LAIMIGA DESIGN STUDIO

