

HORSHAM CAD & RIVERFRONT REVITALISATION

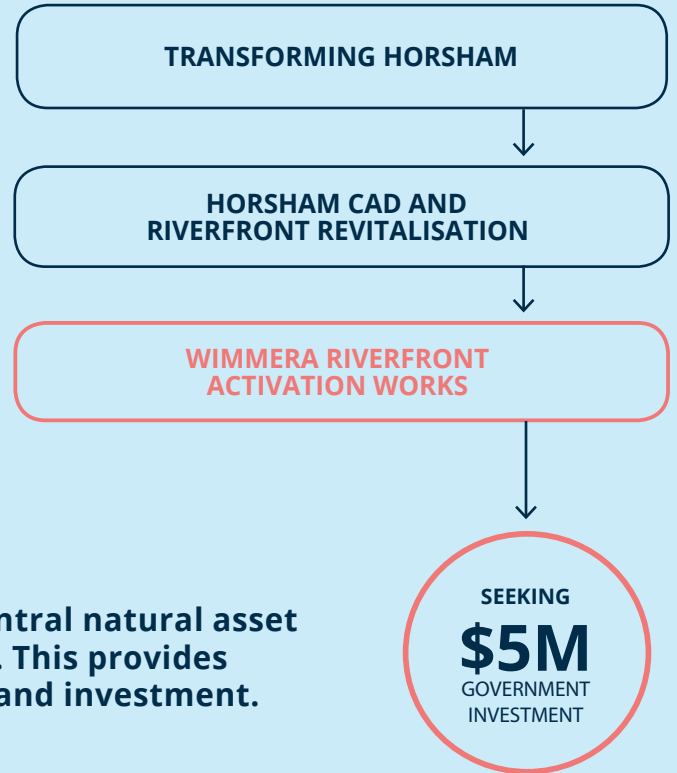
EARLY WORKS: WIMMERA RIVERFRONT ACTIVATION

PROJECT OVERVIEW

The Horsham Central Activities District (CAD) and Riverfront Precinct Revitalisation project is one of four key projects designed to "Transform Horsham".

This long-term strategic and visioning project identifies priority projects that will improve and revitalise the city centre and make better use of the beautiful Wimmera River for residents, businesses and visitors.

The Wimmera Riverfront is Horsham's best central natural asset in the CAD, however, it is highly underutilised. This provides significant opportunity for further activation and investment.



WORKS OVERVIEW AND LOCATION

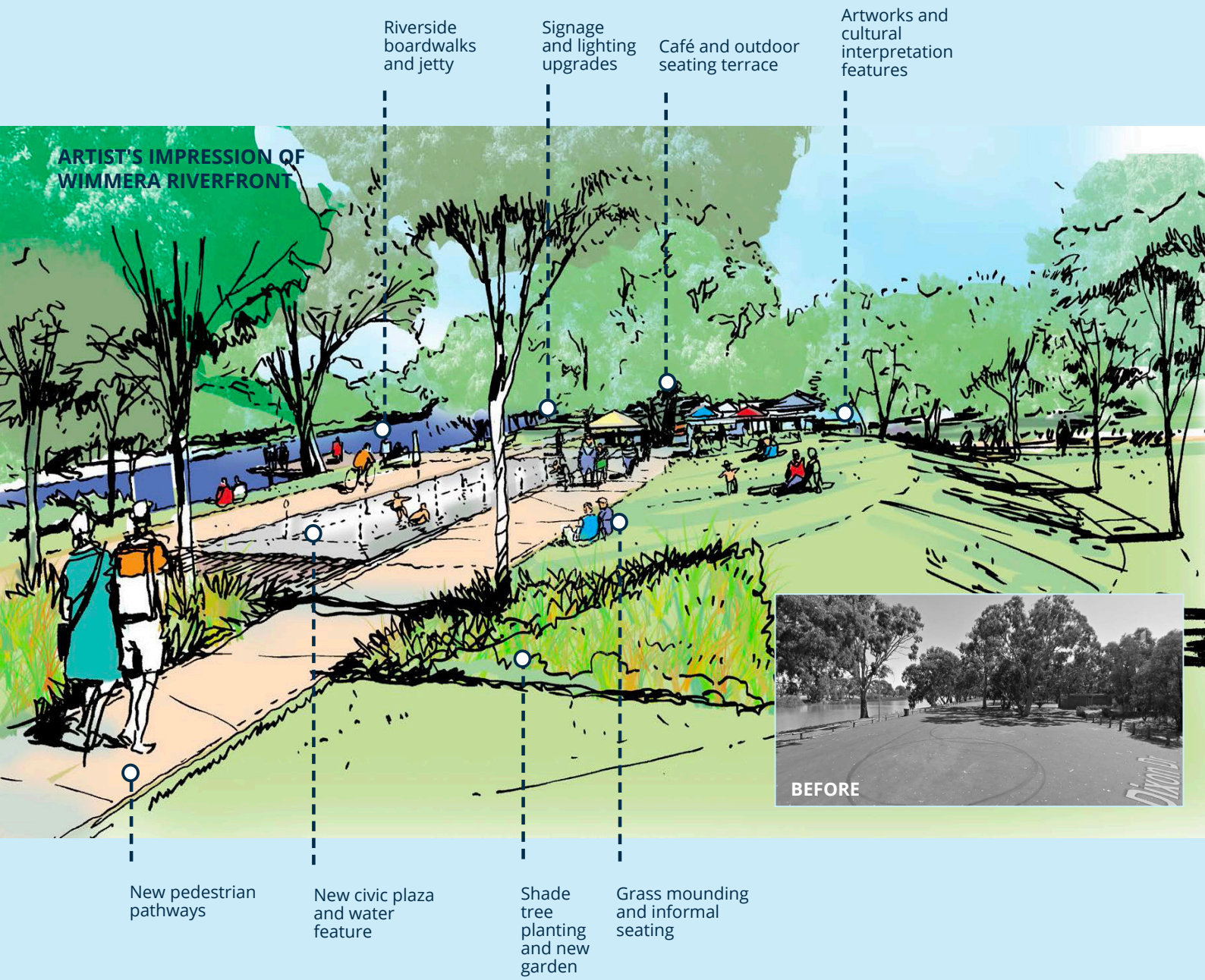
EARLY WORKS (STAGE 1)

- 1 Riverfront Plaza
- 2 Firebrace Street River Arrival

FUTURE WORKS (STAGE 2)

- 3 Improve interface of Caravan Park
- 4 Pedestrian Link to CAD
- 5 Pedestrian and Cycle Paths along Riverfront
- 6 Waterplay Attraction

EARLY WORKS: RIVERFRONT PLAZA



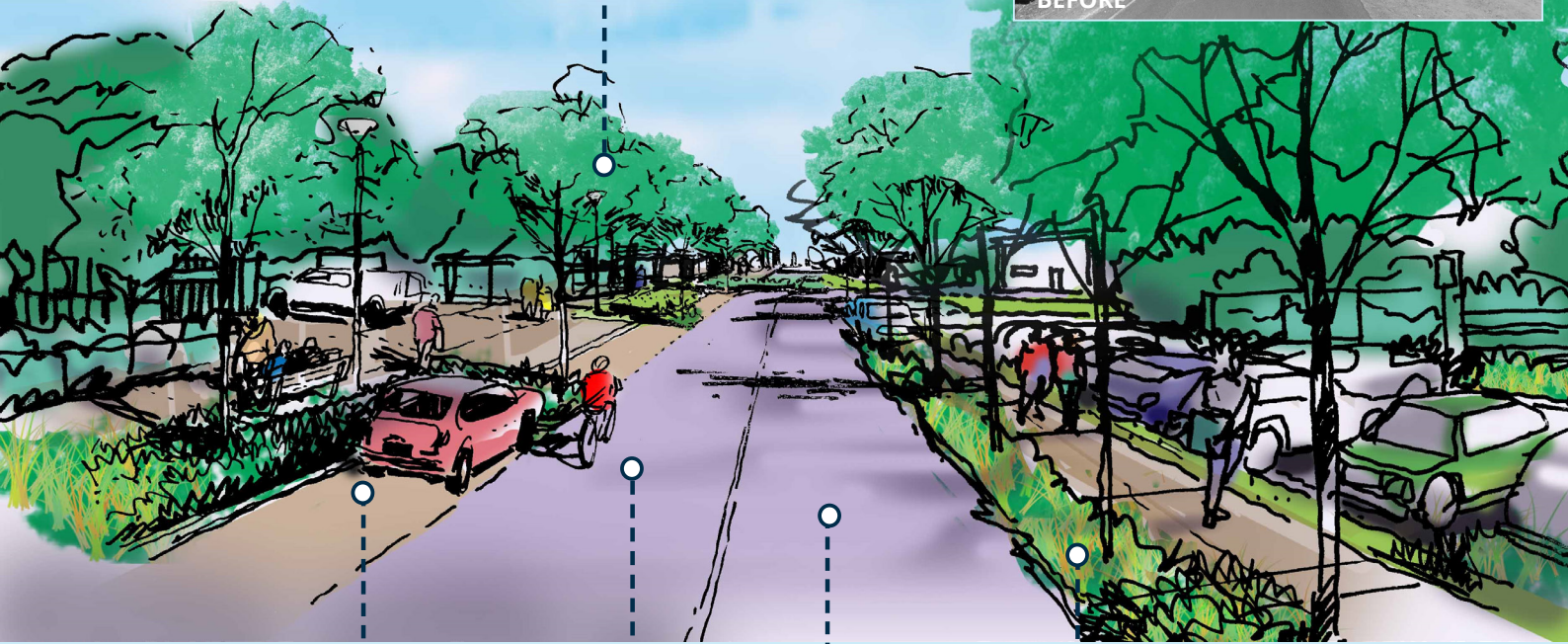
EXAMPLE IMAGES



EARLY WORKS: FIREBRACE STREET RIVER ARRIVAL

Consider lighting and wayfinding enhancement

ARTIST'S IMPRESSION OF FIREBRACE ST (RIVER GATEWAY)



Carparking modified to provide shade planting and reduce apparent width of roadway

Improved provision for cyclists

Road "diet" to reduce width of carriageway

New street tree planting

EXAMPLE IMAGES



DETAILED WORKS: WIMMERA RIVERFRONT ACTIVATION PROJECT

EARLY WORKS (STAGE 1)

Recommended early works possible within an indicative \$5m allowance include the following:

	ITEM	DESCRIPTION	COST
OVERALL PROJECT	Design and Documentation	Funding for overall design and planning and documentation of the precinct in detail	\$500,000
RIVERFRONT PLAZA	Riverfront at Termination of Firebrace St	New riverside public destination and public realm (interpretation, landscape, seats sign)	\$825,000
		Hardworks, river edge, retaining walls, place for pop-up cafe, small events square/piazza type space etc.	\$1,375,000
		Refurbishment of existing toilets and other facilities	\$550,000
		Allowance for art, lighting etc.	\$330,000
FIREBRACE ST	Firebrace St River Arrival	Streetscape works and re-organise carparking with shade trees, Water Sensitive Urban Design, entry signage	\$1,650,000
TOTAL			\$5,230,000

FUTURE WORKS (STAGE 2)

	ITEM	DESCRIPTION	COST	
RIVERFRONT PLAZA	Pedestrian and Cycle Connections	Continue along waterfront	\$1,100,000	
		Caravan Park	Remove fences and create new public baths, rationalise area of existing caravan park and boundaries to better interface with public areas, new planting, signage, furniture	\$825,000
			New Attraction	Water play park
FIREBRACE ST	Link to CAD	New shade tree planting and pedestrian connections	\$1,375,000	
TOTAL			\$4,092,000	

RIVERFRONT PLAZA

OBJECTIVE

To create a new high quality public space destination which activates the Wimmera River for residents and visitors.

BENEFITS








-  Activate existing open space area through higher quality open space
-  Increase visitation to riverfront (residents and visitors)
-  Create a destination open space area for events and informal gathering
-  Health and social benefits through recreation and social gathering
-  Greater safety through lighting and formal path network
-  Opportunity for public art, including indigenous stories and experiences
-  Improve tourism role of Horsham, increase length of stay and visitor activities
-  Increased footfall will improve conditions for private investment (tourism and hospitality)

FIREBRACE STREET RIVER ARRIVAL

OBJECTIVE

To transform the main point of access to the river precinct from the CAD into an inviting, safe, attractive and shaded streetscape.

BENEFITS

-  Create a sense of arrival at the riverfront precinct
-  Improve visual and physical link between CAD and river
-  More efficient use of existing public land
-  Reduce heat to improve pedestrian comfort
-  Greater active transport and physical activity / exercise
-  Improve safety through lighting, formal parking and lanes
-  Increase visitation, duration of stay and visitor experience