

# AGENDA

MEETING OF THE  
**HORSHAM RURAL CITY COUNCIL**

To be held on  
**11 October 2021**  
At 5.00pm

**This meeting will be held online and livestreamed  
on the Horsham Rural City Council website**

[www.hrcc.vic.gov.au](http://www.hrcc.vic.gov.au)



**Horsham Rural City**  
Council urban rural balance

**COUNCILLORS are respectfully requested to attend the Council Meeting of the Horsham Rural City Council to be held at 5.00pm on 11 October 2021 to be held online and livestreamed at [www.hrcc.vic.gov.au](http://www.hrcc.vic.gov.au)**

## **Order of Business**

### **PRESENT**

### **ALSO IN ATTENDANCE**

#### **1. PRAYER**

Almighty God, we pledge ourselves to work in harmony for, the social, cultural and economic well-being of our Rural City. Help us to be wise in our deliberations and fair in our actions, so that prosperity and happiness shall be the lot of our people. AMEN

#### **2. ACKNOWLEDGEMENT OF COUNTRY STATEMENT**

The Horsham Rural City Council acknowledges the five Traditional Owner groups of this land; the Wotjobaluk, Wergaia, Jupagulk, Jaadwa and Jadawadjali people. We recognise the important and ongoing place that all Indigenous people hold in our community.

We pay our respects to the Elders, both past and present, and commit to working together in the spirit of mutual understanding and respect for the benefit of the broader community and future generations.

#### **3. OPENING AND WELCOME**

Welcome to Councillors, staff, members of the public and the media. The Council meeting will be recorded to maintain an audio archive, which will be available on the Horsham Rural City Council website as soon as possible.

Please note that this meeting is being streamed live on the internet.

This meeting is being held online and Councillors are attending via electronic means. As this meeting is being held online, there will be no-one present in the public gallery. The meeting will be conducted in accordance with Council's Governance Rules and Local Law No 1 Governance (2016), noting that, as indicated, in some parts of the agenda, procedures have been slightly modified to ensure the meeting remains compliant but can run effectively in the online environment.

Disclosure of conflicts of interest and rules relating to conflicts of interest remain. Councillors will be removed from the proceedings where required using the available technology.

Voting in relation to motions for decision will be taken by show of hands. If a division is requested, the Mayor will call for a show of hands by those Councillors voting for the motion, and then those Councillors opposed to the motion.

Where Council experiences technical difficulties and there is a disconnection in Council's livestreaming of the meeting, the meeting will be adjourned. If the livestream connection is working within 30 minutes, the meeting will recommence. If the livestream is not available for a period of longer than 30 minutes, the meeting will be postponed to another time and date.

Councillors participating in this meeting by electronic means will be taken to be present and part of the quorum for the meeting, provided that they can hear proceedings, they can see and be seen by other members in attendance, and they are able to speak and be heard by those in attendance. The audio-visual link with each Councillor will be monitored and any disconnection immediately identified for both quorum and participation purposes. If the disconnection is longer than five minutes, the Councillor will be identified as absent from the meeting and will not be counted for quorum purposes. This absence will be reflected in the minutes. If the number of Councillors connected to the livestream falls below the minimum required for the quorum, the meeting will be suspended. If the quorum is not achieved within 30 minutes of the suspension, the meeting will be posted to another time and date.

#### **4. APOLOGIES**

#### **5. CONFLICTS OF INTEREST**

##### **Declarations of Interest**

A Councillor who has declared a conflict of interest, must leave the meeting and remain outside the room while the matter is being considered, or any vote is taken.

##### Members of Staff

Under Section 130 of the *Local Government Act 2020*, officers or people engaged under contract to the Council providing a report or advice to Council must disclose any conflicts of interests in the matter, including the type of interest.

**6. OFFICERS REPORTS ..... 5**

6.1 CONTRACT 22/010 DESIGN AND CONSTRUCT HORSHAM NATURE PLAY PARK.....5

6.2 CONTRACT 22/009 DESIGN AND CONSTRUCT WIMMERA RIVERFRONT NODES.....9

**7. CONFIDENTIAL MATTERS ..... 13**

7.1 CONTRACT 22/010 DESIGN AND CONSTRUCT HORSHAM NATURE PLAY PARK.....13  
*Defined as confidential information in accordance with Local Government Act 2020 - Section 3(1)(g) - Private Commercial Information*

7.2 CONTRACT 22/009 DESIGN AND CONSTRUCT WIMMERA RIVERFRONT NODES.....14  
*Defined as confidential information in accordance with Local Government Act 2020 - Section 3(1)(g) - Private Commercial Information*

**CLOSE**



SUNIL BHALLA  
Chief Executive Officer

## 6. OFFICERS REPORTS

### 6.1 CONTRACT 22/010 DESIGN AND CONSTRUCT HORSHAM NATURE PLAY PARK

<b>Author's Name:</b>	Dianna Blake	<b>Director:</b>	John Martin
<b>Author's Title:</b>	Co-ordinator Project Office (Acting)	<b>Directorate:</b>	Infrastructure
<b>Department:</b>	Engineering Services	<b>File Number:</b>	F04-A06

#### Officer Conflict of Interest

Officer disclosure in accordance with *Local Government Act 2020* – Section 130:

Yes  No

**Reason:** Nil

#### Status

Defined as confidential information in accordance with *Local Government Act 2020* – Section 3(1):

Yes  No

**Reason:** Nil

#### Appendix

Wimmera Riverfront Nature and Water Play Concept Design (**Appendix "6.1A"**)

Tender evaluation report (*Refer to the confidential section of the agenda*)

---

#### Purpose

To award Contract 22/010 for Design and Construction of the Horsham Nature Play Park.

#### Summary

- This contract, being part of the City to River Stage 1 works, includes design and construction of the Horsham Nature Play Park on the Wimmera Riverfront.
- The project cost was estimated as \$1.989M, which is contained within the overall \$2.453M project budget.
- Details of the tender evaluation are presented in the evaluation report in the confidential part of the Council meeting agenda.

#### Recommendation

That Council award the tender for Contract 22/010 Design and Construction Horsham Nature Play Park to AWS Services VIC Pty Ltd, for the contract sum of \$1,487,555 ex GST

## REPORT

### Background

Council is planning for the long term future of the Wimmera River Precinct and Central Business District through the City to River project. The aim is to transform and revitalise the area to make it a more attractive place to live, work, visit and invest in. The first stage of the City to River vision is focused on the revitalisation of the riverfront precinct in a sustainable manner. Council endorsed the Concept Plan presented for City to River Stage 1 Riverfront Activation on 21 September 2020.

The Horsham Nature Play project is a key outcome of the riverfront activation plan, being a regional level attraction for residents and visitors alike. This project will create a new riverside regional play destination. This exciting new attraction encompasses creative natural landscaping with dry and water play for all ages and abilities.

As part of the concept design for the whole Riverfront, Tract Consultants worked with key stakeholders represented by the Community Reference Group (CRG) and Council project team members to develop a concept design and master plan for a nature and water play facility on the riverfront. The proposed location for this facility has been determined as part of the overall development of the riverfront precinct and relates closely to adjacent existing elements and facilities – the Rowing Club, car park and boat ramp, Botanic Gardens and Caravan Park, as well as access from the shared pathway along the riverfront. The nearby Apex (Adventure) Island includes additional play and active recreational facilities, as well as a pedestrian and cycle connection across the Anzac Centenary Bridge to Southbank.

The underlying theme for the Nature Play Park is based on the relationship of the Wimmera River and the broader Wimmera Wetlands, patterns etched into the landscape over time, articulating a story of water – ebb and flow – and its role within this region. The concept design and subsequent construction design adheres to the following principles and guidelines:

- Cultural heritage and history of the region will be interlinked with the development of the riverfront and emphasised through design and artwork elements
- Nature play is interwoven through an undulating, mounded landscape of open lawn, massed groups of groundcovers and shrubs, and play areas with timber sculptures, timber play structures, climbing frames and poles
- Water play areas are designed for different age groups, with some physical separation and age-appropriate elements for more interactive group or active play. Dry and wet sand play areas are provided and offer a range of all-season play opportunities
- A number of proprietary water play elements are included in the design at key locations to provide various water interaction, including jets, spays and manually driven water
- Water play elements are linked to the potable mains water supply and drained into planted rain gardens and then into the river
- Shaded seating areas for parents and carers to sit and supervise play in the facility, as well as seating walls and logs/boulders to partially enclose the play space are located to define and enclose the play space from adjacent circulation pathways, vehicular areas/carpark and the river edge, while still enabling clear vision and oversight by parents and carers
- Accessible and ambulant toilets are included for the play park and positioned to allow ease of access for all users
- Seating, barbecues, shelters and cycle racks are provided
- Safety signage related to water play and resuscitation will be provided at key locations within the facility in accordance with Pool Safety standards, along with “Rules of Use” to cover safety and

consideration of other users, along with directional signage to other attractions and facilities along the riverfront

- The layout of the Nature Play Park will satisfy Sport and Recreation Victoria's aspirations and guidelines for universally accessible recreation facilities.

This contract will deliver detailed drawings and construction of the Horsham Nature Play Park including:

- a) Architectural design of Nature Play Park
- b) Construction of footpaths, pavements, and car parks
- c) Installation of shelter, amenities and street furniture
- d) Installation of nature play and water play equipment
- e) Soft landscaping featuring trees, garden beds and other plants
- f) Hard landscaping featuring pebble creek, sandpit, decking and other elements as designed
- g) External drainage, sewer, water and electrical services.

### **Discussion**

All design and construction will be in accordance with Australian Standards, taking into consideration safety and accessibility.

The \$2,453,000 Horsham Nature Play Park project is fully funded by State and Federal grants, as follows:

- \$2,103,000 - Community Sports Infrastructure Stimulus Program Round 2 (Sport and Recreation Victoria)
- \$350,000 - Local Roads and Community Infrastructure Program Stage 2 (Federal Department of Infrastructure)

Tenders were invited in August with a closing date of 2 September 2021. One conforming tender was received. Council officers conducted detailed interviews, reference checks and investigation on previous work of this contractor to ensure it was able to deliver the high quality result that this project requires. Details of the evaluation process are included in the Tender Evaluation Report attached to the confidential section of the agenda.

The contractor will engage a highly reputable landscape architect to develop the architectural construction design. A preliminary design will be submitted to Council which addresses Council's requirements. The contractor has allowed for two rounds of Council review, comments and alterations. Detailed designs will then be prepared with feature survey data, soil testing data, proof engineering and drawings.

### **Options to Consider**

Council may choose to award the contract as recommended, or not.

The funding from Sport and Recreation Victoria has a milestone requirement to demonstrate the award of contract by 15 October 2021. Failure to award the contract by this date will ensure that this milestone cannot be met, and may put the \$2.103M funding from Sport and Recreation Victoria at risk.

### **Sustainability Implications**

Extensive flood modelling of the riverfront has been conducted to ensure the built structures do not adversely impact on flood flows. This flood modelling has been reviewed and approved by the Wimmera Catchment Management Authority.

### **Community Engagement**

Community engagement has occurred over 18 months, through surveys, drop-in sessions, and the establishment of a Community Reference Group to sculpt the concept plans for this area.

### **Innovation and Continuous Improvement**

The design and construction of this Nature Play Park will implement Water Sensitive Urban Design principles. This land planning and engineering design approach integrates the urban water cycle, including stormwater, groundwater and wastewater management (where relevant) and water supply, into urban design to minimise environmental degradation and improve aesthetic and recreational appeal.

### **Collaboration**

These works form part of Stage 1 of the City to River project. The project is overseen by a Project Reference Group which includes representatives from the Wimmera Catchment Management Authority, Department of Environment, Land, Water and Planning; Sport and Recreation Victoria and Regional Development Victoria.

### **Financial Implications**

The overall budget for the Horsham Nature Play Park is \$2,435,000. Provisions for individual components of these works are allocated within this budget based on cost estimates by an external quantity surveyor.

The project budget is as shown:

\$ 1,487,555	22/010 Design and Construct Nature Play Park (this tender)
\$ 250,000	Additional play elements to be approved
\$ 100,000	Covered shade for car park
\$ 60,000	Advanced trees for shade in the play area and surround
\$ 248,000	Contingency and cost escalation allowance
\$ 172,000	Consultants and project management
<u>\$ 135,445</u>	Client costs and authority / headwork's charges
<u>\$ 2,453,000</u>	

The preferred tender is within the fully-funded budget for this project.

Council's subsequent budgets will need to take into account the additional operations and maintenance costs of these and other City to River project works. These are anticipated to be at least partly funded through savings generated in the operations efficiency project.

### **Regional, State and National Plans and Policies**

Not applicable

### **Council Plans, Strategies and Policies**

2020-2024 Council Plan

Goal 1 – Community and Cultural Development

Four-Year Priority 1.2.09 – Activate the Wimmera River Precinct for the community and visitors (including lights and greater presentation)

### **Risk Implications**

Standard construction risks apply to this project, these will be managed by Council's Project Office during the construction process. The adoption of a Design and Construct form of contract assists in the assignment of risks during the construction phase.

Timelines associated with the requirements of funding partners need to be achieved.

### **Conclusion**

The construction of the Horsham Nature Play Park along the Wimmera Riverfront is a key project in the City to River Stage 1 works. A suitable contractor has been identified to deliver the required outcome within the available budget.



## 6.2 CONTRACT 22/009 DESIGN AND CONSTRUCT WIMMERA RIVERFRONT NODES

<b>Author's Name:</b>	Dianna Blake	<b>Director:</b>	John Martin
<b>Author's Title:</b>	Co-ordinator Project Office (Acting)	<b>Directorate:</b>	Infrastructure
<b>Department:</b>	Engineering Services	<b>File Number:</b>	F04-A06

### Officer Conflict of Interest

Officer disclosure in accordance with *Local Government Act 2020* – Section 130:

Yes  No

**Reason:** Nil

### Status

Defined as confidential information in accordance with *Local Government Act 2020* – Section 3(1):

Yes  No

**Reason:** Nil

### Appendix

Tender evaluation report (*Refer to the confidential section of the agenda*)

### Purpose

To award Contract 22/009 for the Design and Construction of Wimmera Riverfront Nodes.

### Summary

- This contract, being part of the City to River Stage 1 works, includes design and construction of three nodes/decks on the Wimmera River.
- The project cost was estimated as \$480,000, which is contained within the overall \$3.1M project budget for the Stage 1 works.
- Tenders were evaluated in accordance with the standard process.
- Details of the tender evaluation are presented in the evaluation report.

### Recommendation

That Council award the tender for Contract 22/009 Design and Construction Wimmera Riverfront Nodes to Bridgewater Marine Pty Ltd of Point Lonsdale, for the contract sum of \$463,959 ex GST.

## REPORT

### Background

Council is planning for the long term future of the Wimmera River Precinct and Central Business District through the City to River project. The aim is to transform and revitalise the area to make it a more attractive place to live, work, visit and invest in. The first stage of the City to River vision is focused on the revitalisation of the riverfront precinct in a sustainable manner. Council endorsed the Concept Plan presented for City to River Stage 1 Riverfront Activation on 21 September 2020.

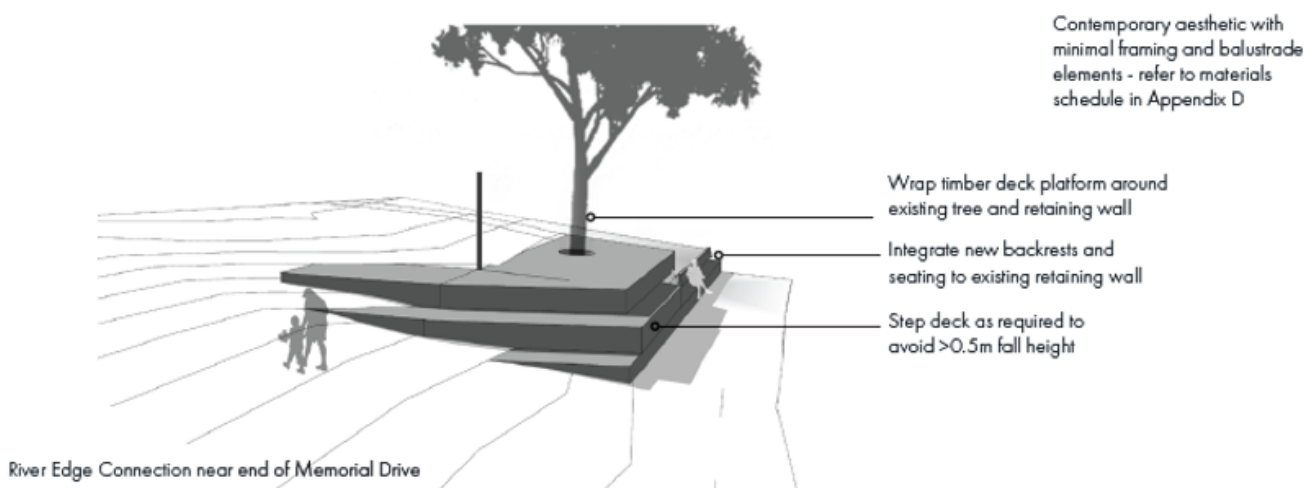
This contract will deliver three river edge connecting nodes, which is one of the key deliverables in the Concept Plan.

The nodes will create an axial link, both physical and visual, between the land and the river, by providing river edge access and viewing platforms. These works will act as a series of interconnected landmarks that will subtly support and enhance activities along the river's edge.

The three nodes/decks are a combination of in-water and on ground designs as follows:

- Node 1 – is aligned with Firebrace Street and the Entrance Pergola, this is a wharf-style design, requiring footings in water
- Node 2 – is located towards the western end of the precinct, aligns with the to-be-constructed Nature Play Park, and is also a wharf-style design requiring footings in water
- Node 3 - the eastern-most deck is required to be constructed on the riverbank only, around a tree, with no footings in water.

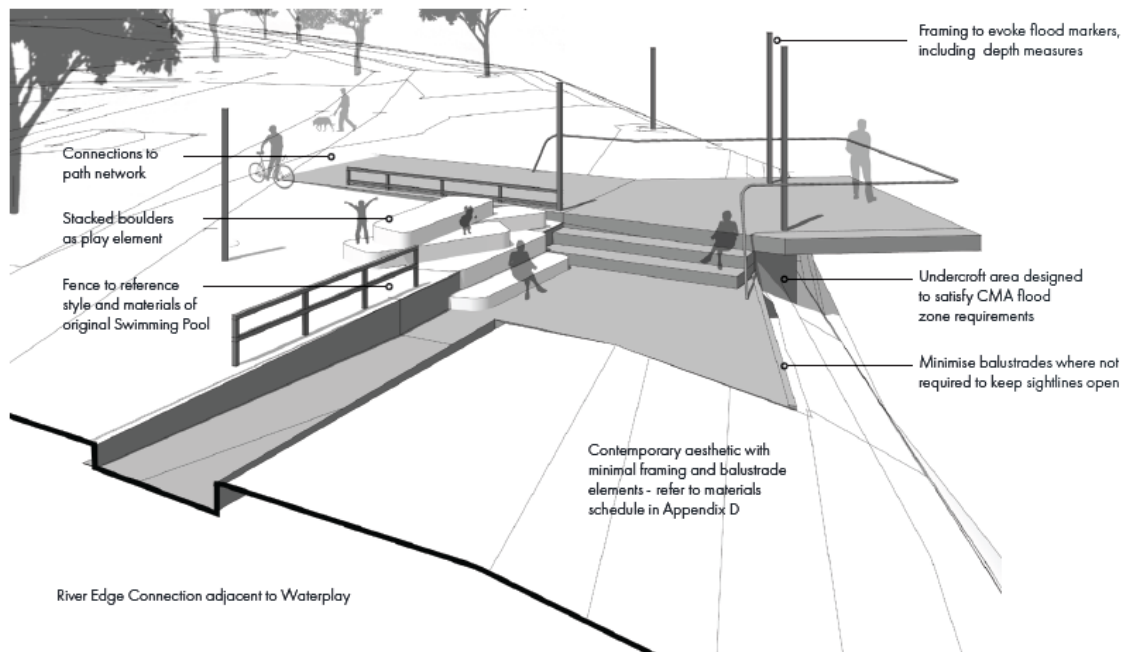
The diagrams on this page and the next page illustrate these nodes.



### Discussion

Council commissioned an architectural and structural design for these nodes as part of the \$3.1M City to River Stage 1 Priority Works. Tenders were called for the project in June 2020, specifying that submissions needed to comply with the supplied design. No responses were received to this initial tender.

Following feedback from contractors who had downloaded the tender documents, the tender was re-issued, updated to allow submission of changes to the substructure design while maintaining the architectural view of the nodes, as a non-conforming tender.



Four conforming tenders and one non-conforming tender were received. Details of the evaluation process are included in the Tender Evaluation Report attached.

### Options to Consider

Non-conforming tenders were allowed for this tender as an option, provided the tenderer also submitted a conforming tender.

The non-conforming tender response was received from Bridgewater Marine, a specialist wharf and jetty builder. Bridgewater Marine brought forward their expertise in proposing alternate sub-structure design while maintaining the architectural intent of the original design.

All other tenderers are general construction companies.

### Sustainability Implications

Flood modelling of the riverfront has been conducted to ensure the built structures do not adversely impact on the river flow or other properties. This flood modelling has been reviewed and approved by the Wimmera Catchment Management Authority.

### Community Engagement

Over 700 written submissions were received during the development of the City to River Master Plan. One of the key priorities identified for development was improved access to the water's edge. Community engagement has occurred over 18 months, through surveys, drop-in sessions, and the establishment of a Community Reference Group to sculpt the concept plans for this area.

### Innovation and Continuous Improvement

The recommended tenderer has proposed a range of measures to simplify construction and ongoing maintenance of the nodes.

### Collaboration

These works form part of Stage 1 of the City to River project. The project is overseen by a Project Reference Group which includes representatives from the Wimmera Catchment Management Authority, Department of Environment, Land, Water and Planning; Sport and Recreation Victoria and Regional Development Victoria.

**Financial Implications**

The overall budget for the City to River Stage 1 works is \$3.1M. Provisions for individual components of these works are allocated within this budget based on cost estimates by an external quantity surveyor. The quantity surveyor's estimate for these works was \$480,000 ex GST, hence, the preferred tender is within that estimate.

**Regional, State and National Plans and Policies**

Not applicable

**Council Plans, Strategies and Policies**

2020-2024 Council Plan

Goal 1 – Community and Cultural Development

Four-Year Priority 1.2.09 – Activate the Wimmera River Precinct for the community and visitors (including lights and greater presentation)

**Risk Implications**

Standard construction risks apply to this project, these will be managed by Council's Project Office during the construction process. The adoption of a Design and Construct form of contract assists in the assignment of risks during the construction phase.

Delivery of this project will be managed in accordance with relevant COVID restrictions that apply at the time of the works.

**Conclusion**

The construction of these three waterfront nodes along the Wimmera Riverfront is a key project in the City to River Stage 1 priority works approved by Council last year. This will be the third deliverable in these key activation projects.

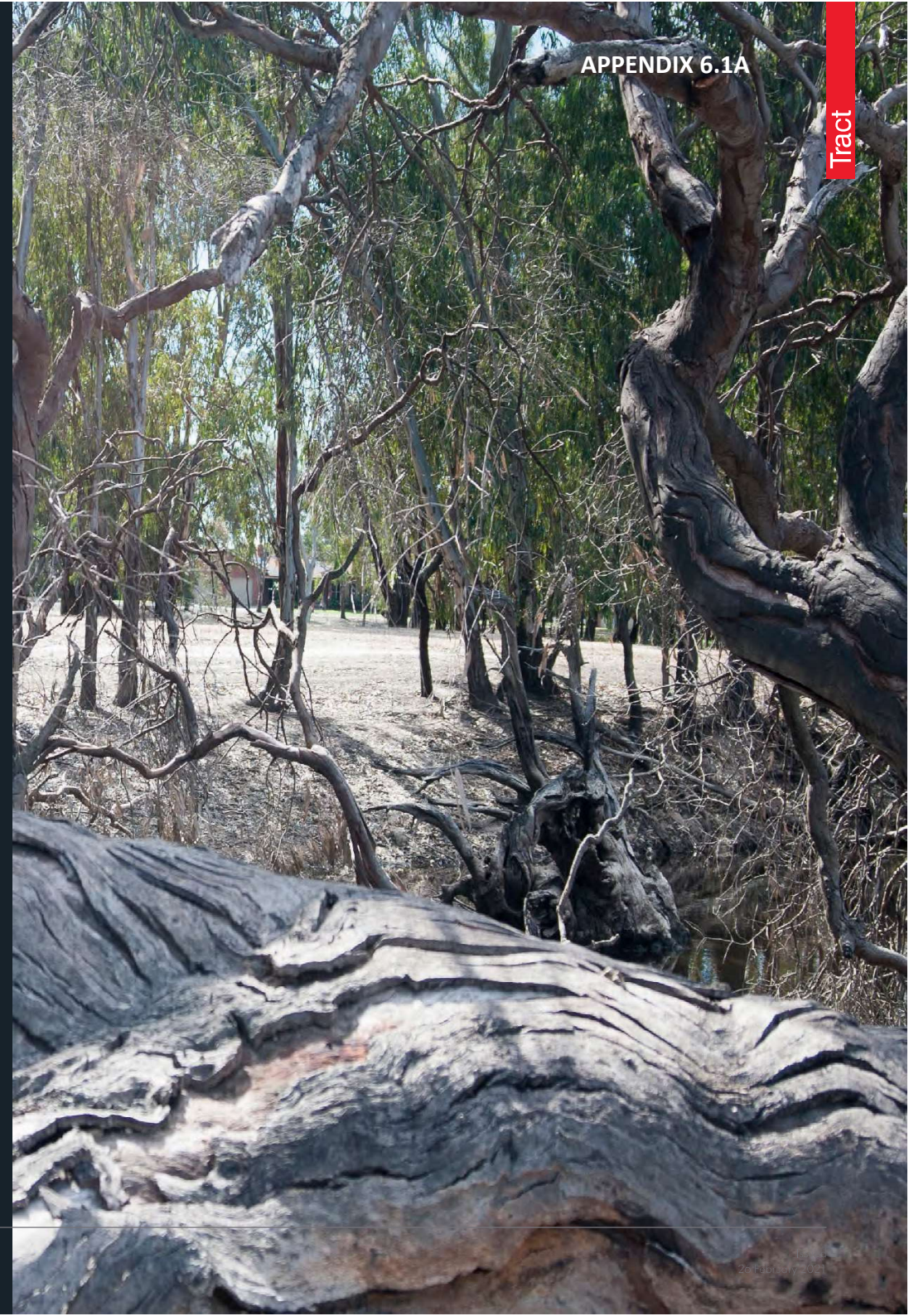
# Wimmera Riverfront Nature and Water Play

## Landscape Development

### RP02 Funding Application Report

Prepared for Horsham Rural City Council

26 Feb 2021



## Quality Assurance

### Wimmera Riverfront Nature and Water Play Park

Landscape Development

Prepared for Horsham Rural City Council

Project Number  
0318-0995-00-L-02-RP02

Revision (see below)  
03

Prepared By  
EC

Reviewed By  
NS

Project Principal  
RC

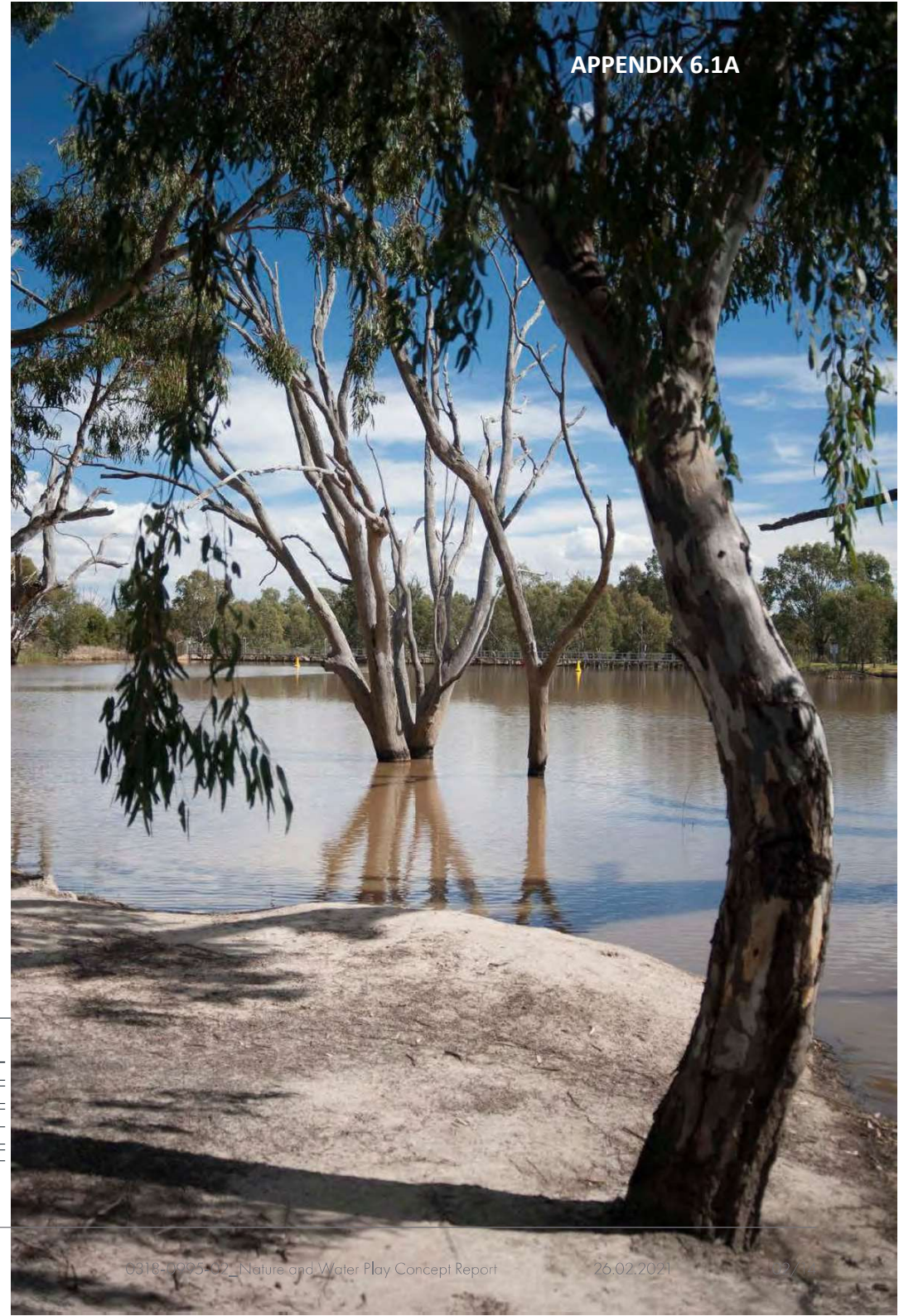
Issued  
26 February 2021

## Acknowledgement of Country

Horsham Rural City Council and Tract Consultants acknowledge the five Traditional Owner groups of this land; the Wotjobaluk, Wergaia, Jupagalk, Jaadwa and Jadawadjali people, represented by the Barenji Gadjin Land Council.

We recognise the important and ongoing place that all Indigenous people hold in our community.

We pay our respects to the Elders, past, present and emerging, and commit to working together in the spirit of mutual understanding and respect for the benefit of the broader community and future generations.



### Revisions

Rev	Issued	Details	Prepared By	Reviewed By	Project Principal
[00]	[17 June 2020]	[Wimmera Riverfront Water Play Facility Report]	[EC]	[NS]	[RC]
[01]	[18 June 2020]	[Wimmera Riverfront Water Play Facility Report]	[EC]	[RC]	[RC]
[02]	[28 September 2020]	[Wimmera Riverfront Water Play Facility Report]	[EC]	[NS]	[RC]
[03]	[26 February 2021]	[Wimmera Riverfront Nature and Water Play Facility Report]	[EC]	[NS]	[RC]

## Background / Location

This project is the first stage of the City to River Masterplan to enhance and revitalise the Wimmera River Precinct and Central Activity District of Horsham.

The Wimmera River is one of Horsham's significant natural asset and key regional strength of Horsham, providing the basis of establishing the town settlement in the 1830's. The Wimmera River and Wetlands also provided a bountiful homeland for the indigenous groups of the area for thousands of years. This project builds on this strength creating a new active public realm destination with linkages to the central activity district and existing open space and recreational facilities.

The development of the Riverfront precinct is Stage 1 of the City to River Masterplan with the following principle objective:

To activate, connect and add value to the Riverfront Precinct to establish an iconic community, recreation and tourist destination. It aims to address the following statement;

"How do we make the Wimmera Riverfront an even more inviting place for everyone now and for generations to come?"

### Wimmera Wetlands

Horsham lies in the centre of the internationally significant Wimmera Wetlands region and this project and development of the Riverfront is seen as an educational tool. Signage and information within the design can provide for a better understanding of the history and hydrology of the Wimmera River system, implementation of sustainable drainage systems and connection between water play and an improved knowledge of water management and preservation.

### Cultural Heritage

The productivity of the Wimmera region formed the basis for settlement in the area from the early 1800s but First Nations people possess an extensive history of living on this land and connection and relationship with the fertile wetlands and western plains. This cultural heritage and history of the region will be interlinked with the development of the Riverfront and emphasised through design and artwork elements.

### Water Sensitive Urban Design (WSUD)

As part of the overall strategies for this landscape Masterplan, we are seeking to improve and integrate water sensitive design measures to align with a Water Sensitive Cities approach with the following objectives:

Healthy - making the best of our local environment

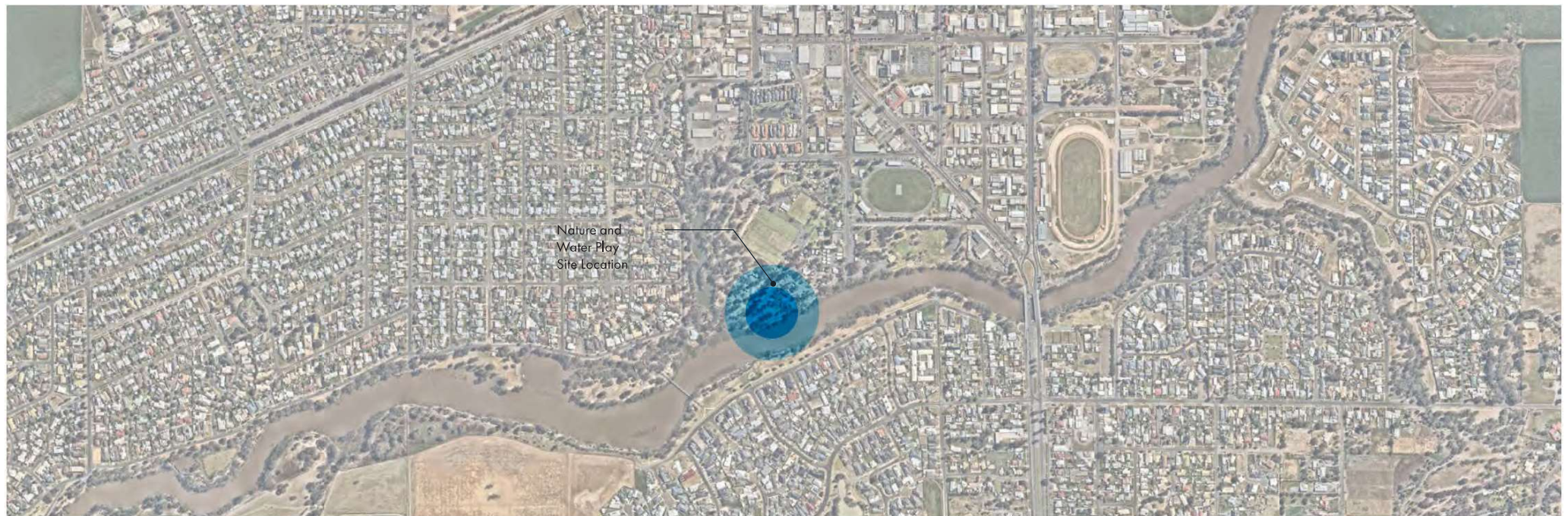
1. To support year-round passive and active recreation
2. To protect and enhance local waterways
3. To support urban biodiversity

Prosperous - making changes to improve our city

4. To improve the amenity of the urban environment
5. To create stronger connections between communities and nature
6. To improve the functionality of urban places
7. To drive increased tourism and visitation

Resilient - making sure we are ready for challenges

8. To make use of alternative water supplies locally to prepare for drought
9. To reduce the impacts of flooding
10. To provide pleasant and cooling environments during hot weather



## Funding Application - Design Scope

### Riverfront Development

The Horsham Rural City Council are developing the first stage of the City to River Masterplan adopted in 2019, with concept development of the Stage 1 Riverfront precinct currently underway. As part of that concept, Tract Consultants are working on the development of the plans, engagement and liaison with key stakeholders represented by the Community Reference Group (CRG) and Council project team members.

A key part of the Stage 1 works is the development of a regional level attraction in the form of a Nature and Water Play facility on the riverfront – refer Masterplan below.

This facility is seen as a key feature in the development of the Horsham Riverfront and recreational open space within the City to River Masterplan area and a major attraction designed to create interest and attract visitation to the region and for use and enjoyment of Horsham residents, and visitors from the region and from further afield.

### Design Concept

The Play Park is a key part of the landscape masterplan for this riverfront precinct, providing a new significant community-based recreational facility and attraction to this part of the open space network in the city of Horsham and adding to the impetus of connecting the City to the Riverfront as part of the aspiration of the C2R Masterplan. The location has been determined as part of the overall development of the riverfront precinct and relates closely to adjacent existing elements and facilities – Rowing Club, carpark and slipway, Botanical Gardens and Caravan Park, as well as access from the shared pathway along the riverfront. The nearby Adventure Island includes additional play and active recreational facilities and a pedestrian and cycle connection across the Anzac Bridge to the South Bank.

### Relationship to Country

The underlying theme for the Nature and Water Play Park is based on the relationship of the Wimmera River and the broader Wimmera Wetlands, patterns etched into the landscape over time, articulating a story of water – ebb and flow - and its' role within this region. Integration of stories and artwork from the local Barenji Gadjin Land Council is being developed further and will be included in the final landscape design.

The design concept is a reference to the Wimmera River

- a system of flood plains and ephemeral pools that are formed through the meanderings of the river through the landscape – pools and depressions in the landscape that intermittently fill up and drain. The treatment of these reflects the types of micro-ecosystems that develop around these pools when water levels drop, and include a series of depressions along a water course that have play elements in them- dam wall/weirs, pools and rapids, as well as the river banks and associated vegetated areas.

### Water Play Layout

The Water Play layout includes areas designed for different age groups, with some physical separation and age-appropriate elements for more interactive group or active play. Dry and wet sand play areas are provided as part of the design and offer a range of all-season play opportunities. Shaded seating areas for parents and carers, as well as seating walls and logs / boulders to partially enclose the play space are provided and located to define and enclose the play space from adjacent circulation pathways and vehicular areas / carpark. These walls and barriers provide some physical containment for smaller children to separate them from the river edge.

### Nature Play

The 'Creek' is interwoven through an undulating, mounded landscape of open lawn, massed groups of groundcovers and shrubs, and mulched play areas with timber sculptures, climbing frames and poles. The Playground is shaded by shade structures and a canopy of existing and additional native shade trees, with grassed areas and pathways providing access and circulation options and additional play opportunities. A contained sand play area for younger children and timber climbing and scrambling items provide additional options for play and use during colder months when the water play elements may be less frequently used.

### Safety and Surveillance

Layout and location of the Play area has been designed to allow clear vision and oversight by parents and carers, with separation from more active circulation routes and the river. Designation and suitable features for different age groups have been provided to facilitate multiple uses.

### Universal Access

The layout of the riverfront development and specifically, the Play facility satisfy Sports and Recreation aspirations and guidelines for universally accessible recreation facilities. The design of pathways and circulation, grading to suit step free access and provision of adjacent parking, including DDA dedicated spaces, is included to ensure access for all users, regardless of mobility, age or ability. Where steps are included, adjacent graded walkways are provided.

In the future, an access route is planned from the riverfront development and Water Play into the Gardens and linking to the existing playground.

The Shared Pathway is widened to 3 metres through the project site to allow for higher levels of traffic and increased safety with pedestrians, joggers and cyclists using the path at various times. This increased width is proposed to be carried through the remainder of the Riverfront upgrade precinct.

### Signage

Safety signage related to water play and resuscitation will be provided at key locations within the Facility, in accordance with Pool Safety standards, along with 'Rules of Use' to cover safety and consideration of other users. General Access signs at the entrance from Eastgate Drive and parking regulations will also be provided, along with directional signage to other attractions and facilities along the Riverfront.

### Ecologically sustainable design

The project aims to deliver sustainable and high quality, well designed open space and recreational facilities as a public realm asset to the community, that contributes to health and wellbeing of users, maximises suitability and function of Play and provides an equitable and useful recreational facility. The design seeks to maximise the benefits of the locality and surroundings, capitalising on the adjacent river and existing open spaces and recreational facilities, creating a well connected, inclusive and healthy resource for the community. The layout allows for retention of all existing trees unless considered dangerous or unsuitable by the Council Arborist. Improvement and connection to the existing network of paths provide various modes of access – pedestrian, cyclists, scooters and vehicles, with parking including DDA dedicated spaces.

The landscape design works with existing contours and current infrastructure – paths and carpark areas – and will integrate predominantly native planting to reduce water use and maintenance.

As outlined in WSUD section above, the design prioritises water management and effective use. Water from the play elements is directed to infiltration 'rain gardens' within the planting design. Water use will be monitored and maintained at suitable minimal levels.

Runoff from carpark and hard paved area will be directed into rain gardens and soft landscape to provide passive irrigation of adjacent planting.

An increase in flowering shrubs and trees within the new planting will increase biodiversity of the riverfront, as well as providing food and habitat for fauna and insects, with a predominance of indigenous planting.

### Water Play System

The Water Play elements are linked to Mains potable water supply and drained into planted rain gardens and then into the river. The provision of interactive water play elements is developed within a contained and linked series of 'pools' or depressions along a defined ephemeral 'Creek'. A number of proprietary water play elements are included in the design at key locations to provide various water interaction, including jets, sprays and manually driven water, as well as a more interactive system of adjustable dams and weirs allowing user adjustment and collaborative play within smaller groups. In addition, a more open paved area with a number of pop-jets will provide for more active play and interaction by older children and groups.

### Shelters and Furniture

An accessible toilet/change room is included for the Play Park and is positioned to allow ease of access for all users. Cycle racks are provided for users of the Play Park and associated recreation areas and the shared pathway network.

Provision is made for seating, barbecues and shelters for parents and carers to sit and supervise play in the Facility.



**Context**

Tract Consultants were commissioned to develop the Stage 1 Concept Development plans, following on from our work on the C2R Masterplan. We have participated in additional engagement and coordination with the HRCC Working Group and the Community Reference Group (CRG) under the guidance of Mosaic Lab and are developing the Masterplan concept to integrate community feedback received from earlier community consultation undertaken in 2019/20.

Definition of the Stage 1 boundary has been undertaken by HRCC in consultation with landowners and key stakeholders and represents the most effective extent of work for this first stage of development and ultimately, construction of the works, intended to commence in late 2020.

The initial Concept Masterplan (below) builds on the intent of the C2R Masterplan and captures additional consultation undertaken. Key elements and sub-projects have been identified as part of the initial cost planning and incorporated into the design to achieve the overall goals and objectives of the C2R Masterplan and represent the best value for money within this initial stage of works. These are described in the Legend and further information provided in the enlarged plans on the following pages.

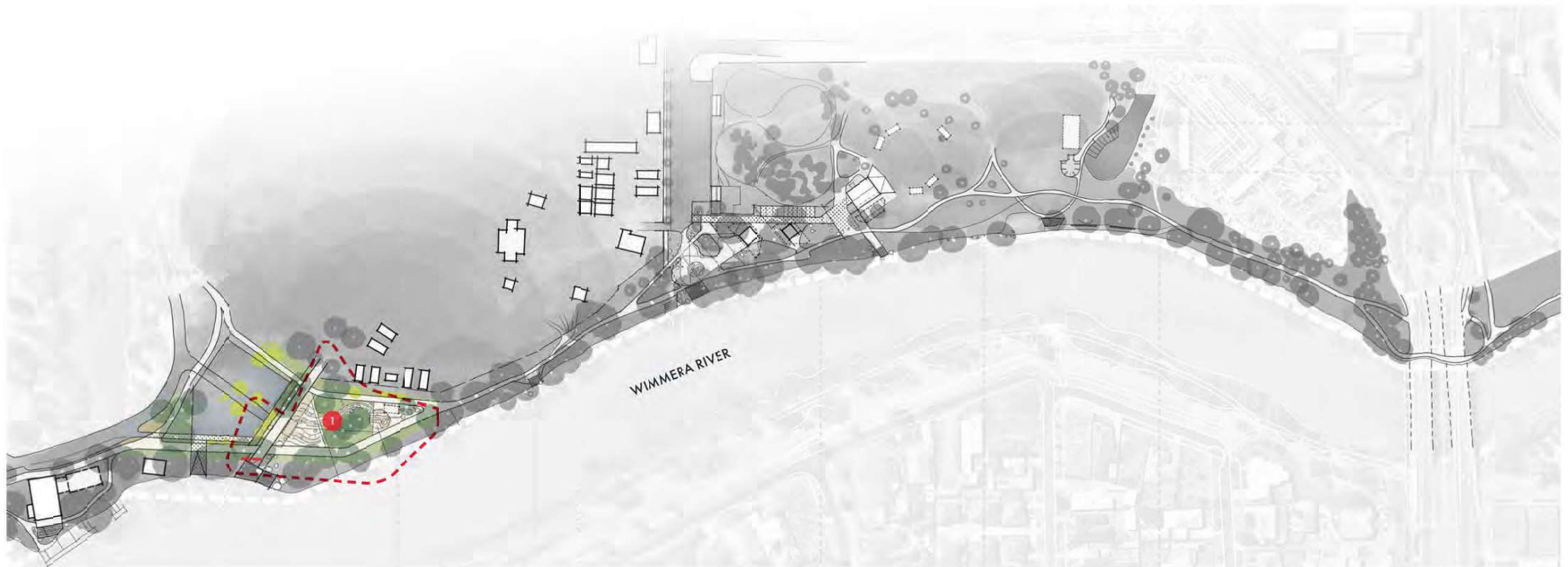
**Key - location**

- 1 Regional Water Play destination, shelters, historical and cultural interpretation

**Precinct Wide elements**

A number of elements will be applied to the extent of the Stage 1 works to ensure a comprehensive and coordinated upgrade of basic elements and integration of a consistent approach to the project development. These elements include:

- Public Art elements, interpretive, storytelling, wayfinding, play
- Pedestrian lighting replacement (unit)
- Walk/cycle path upgrades - increased width and defined edging
- Furniture (unit) - seating at 50m intervals and at nodes
- River bank remediation (l/m) - to be determined in conjunction with WCMA/ DELWP
- Wayfinding and signage



**Stage 1 Concept Masterplan**

1:2500 (A3) 0 20 40 100

# Nature and Water Play Park - Nodal Diagram

## Nature Play

- Integration of nature based play elements within the landscape zones of the play space
- Climbing and clambering sculptural pieces set into the mulched play zones
- Log climbing structure for active use - positioned adjacent to intermediate water play
- Reference to riverine landscape - reeds and trees along the watercourse

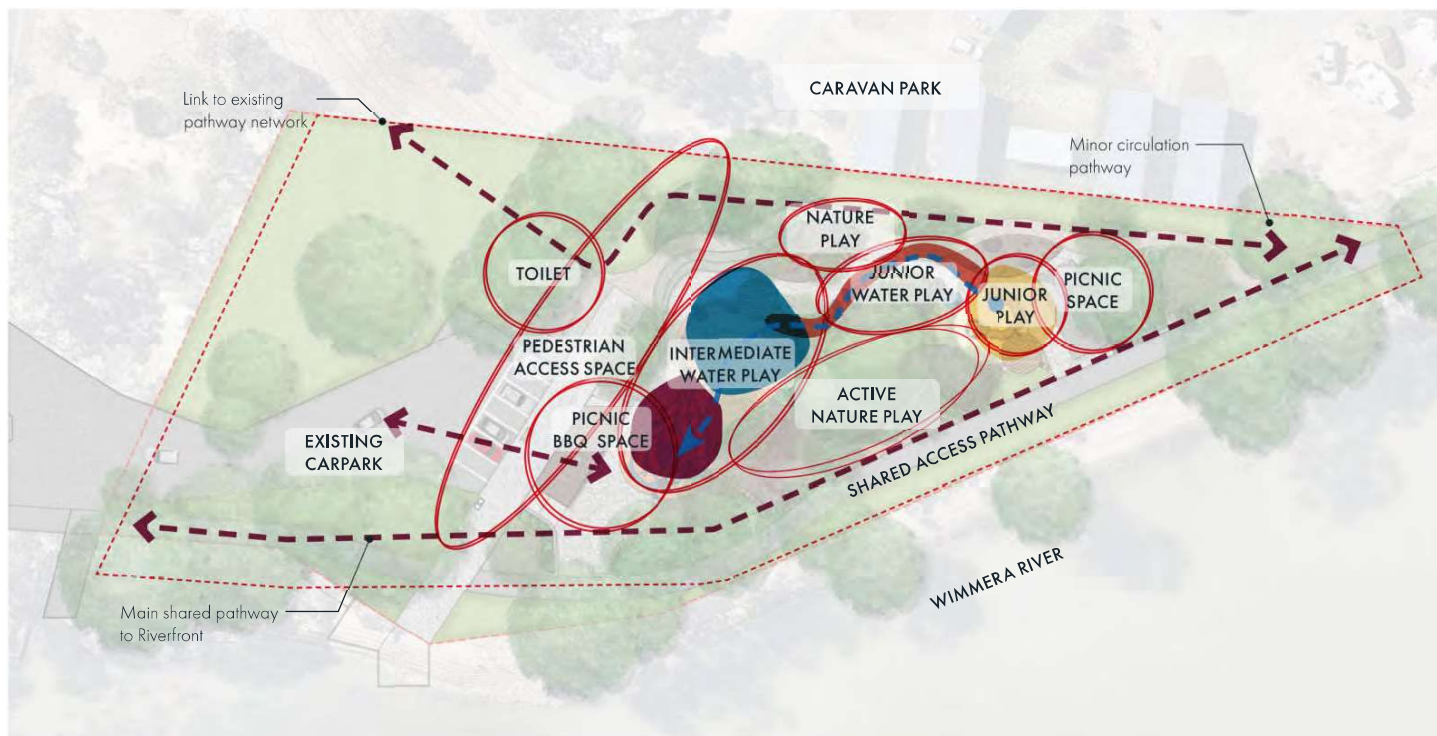
## Waterplay

- Interactive Water Play destination /facility with ephemeral pools, spray-jets and imaginative play opportunities
- Indigenous story embedded into landscape and reference to heritage and Wimmera River country
- Reference to Wimmera Wetlands - internationally recognized Ramsar sites and deep indigenous significance to cultural heritage and local settlement history

## Conceptual zoning

The main play areas have been structured to reflect the features of the River floodplain they sit within. The play space includes a combination of nature and water based play spaces. Four water zones including; River beach, Creek, Flood plain and Tributary mimic the character of these landscape features within the waterplay park. Areas of bark mulch integrating natural timber play elements, sculptures and climbing frames are distributed either side of the water course, alluding to the Wimmera River banks and natural ecosystem.

- River Beach zone
- Creek zone
- Flood Plain zone
- Tributary zone



NTS

# Landscape plan



## Legend

- |   |   |  |
|---|---|--|
| <ul style="list-style-type: none"> <li>1 Main Pedestrian Plaza<br/>- exposed aggregate concrete (4m wide) with 1.5m compacted gravel pathways</li> <li>2 Main shelter<br/>- Timber decking with shelter, contains picnic table, seating and barbecue</li> <li>3 2m compacted gravel footpath</li> <li>4 Extend existing carpark and make good asphalt with 150 x 150mm flush concrete edging</li> <li>5 Gravel open space with feature tree</li> <li>6 Pebble creek surface treatment with coloured banding</li> <li>7 Water play ground surface</li> <li>8 Raised timber platform (+ 450mm)</li> <li>9 Sandpit with play elements</li> </ul> | <ul style="list-style-type: none"> <li>10 Picnic Shelter<br/>- with exposed aggregate paving and picnic benches</li> <li>11 Picnic table and benches</li> <li>12 In situ concrete curved seating wall (600mm wide) around gravel open space</li> <li>13 Concrete in situ raised wall to 450mm high x 300mm wide - off form finish</li> <li>14 Concrete in situ curved seating</li> <li>15 Class 2 recycled hardwood logs in concrete footing . 400-500mm high x 250mm diameter. Spacing to achieve 100mm gap between logs</li> <li>16 Granite boulders</li> <li>17 Water Play 'pooling' area</li> </ul> | <ul style="list-style-type: none"> <li>18 Drains to centre outlet with ball valve</li> <li>19 Existing trees</li> <li>20 Proposed trees</li> <li>21 Curved broad concrete steps</li> <li>22 Accessible Public Toilet / Change Room</li> <li>23 Asphalt shared pathway (3.5m wide) with dashed centre line</li> <li>24 Flat topped 'islands' defining tributaries</li> <li>25 Softfall mulch to play areas</li> <li>26 Cycle racks</li> </ul> |
|---|---|--|

## Water Play

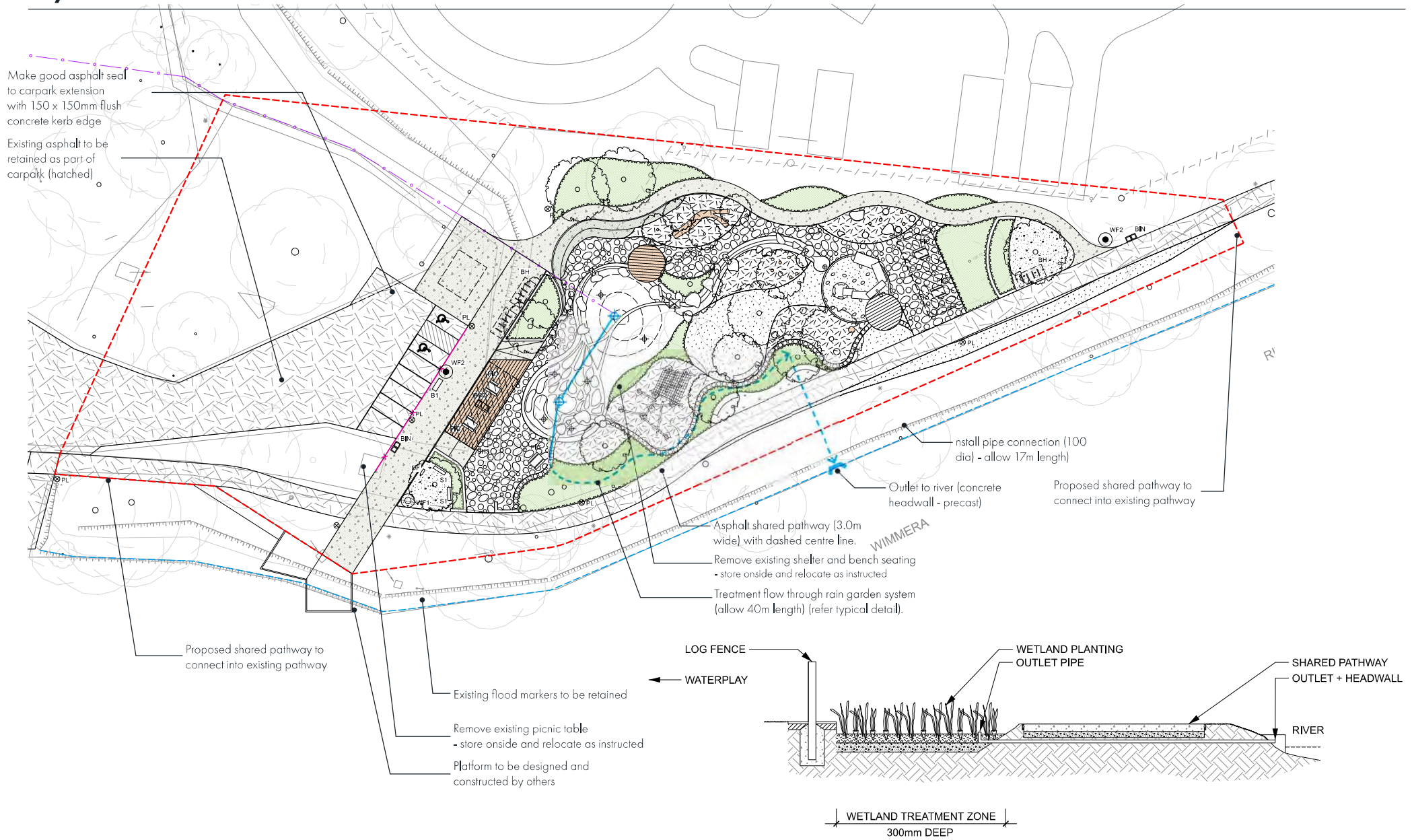
- P1 Pole-top sprinklers
- P2 Long Handle Pump
- P3 See-Saw Pump
- P4 Water Switch
- P5 Rectangular flap gate
- P6 Water Dam
- P7 Mushroom Pump
- P8 Hand pump
- P9 4 no. simple spraying heads

## Nature Play

- N1 Climbing Frame (Type O6)
- N2 Timber animal sculptures
- N3 Log Poles (reeds)
- N4 Climbing Log

1:500 (A3)  

Layout Plan - retention & removal

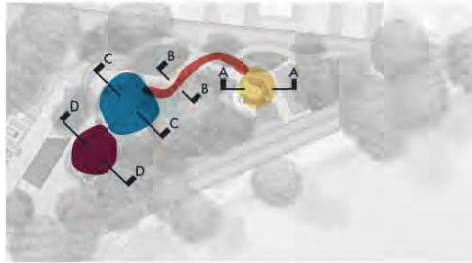


Typical Section

1:500 (A3)



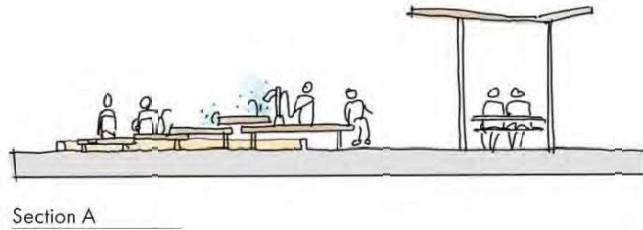
# Water Play Elements & Typical Sections



Key plan

## River Beach zone

- All ages play area (1+)
- Wet 'mud' play with sand
- All seasons play
- All abilities access from hardstand



Section A

## Creek zone

- All ages play area
- Easy mushroom pump (3+)
- All seasons play opportunities



Section B

## Flood Plain zone

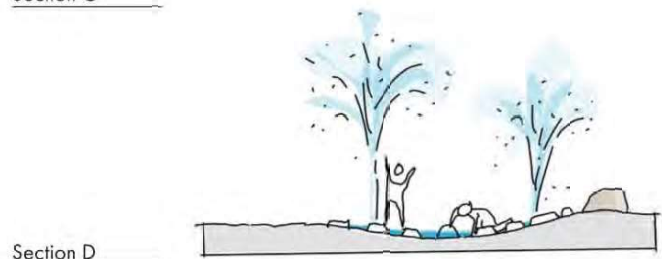
- Intermediate age play
- Physical activation pumps
- Water direction options with switch gate



Section C

## Tributary zone

- All ages play
- Shallow water fill option with ball valve



Section D



Hand pump



Raised waterplay elements



All abilities access



Wet 'mud' play



Mushroom pump - 3yrs+



Creek bed and pooling area



Wedge gate



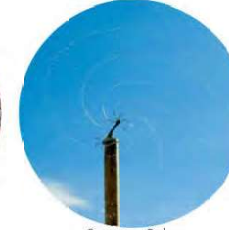
Switch gate



Pole-top sprinkler zone



See-saw and other physical sprinkler pumping



Spinning Pole-top sprinklers



Spraying heads



Water tributaries



Ball valve

Precedent Imagery



# Materials and Furniture

## Furniture and Shelter



Landmark - Wyalla Series  
Roof shelter



Landmark - Flinders Setting Series  
Picnic Bench



Landmark - Flinders Setting Series  
Park Bench



Landmark - Furry Premium  
- Double with two plates  
BBQ



Landmark - Single Bicycle Stand  
- Stainless steel  
Bike Racks



Landmark - Avenue Surround Series  
- Avenue bin surround, both  
circular opening (recycling  
and standard opening)



In situ curved concrete seating



Toilet Block  
Landmark Coastal

## Materials



Waterplay creek bed



Australian hardwood timber  
seating and decking



Feature trees



Mass planted garden beds



Water



Compacted Gravel



Waterplay surface



Exposed aggregate  
concrete coloured paving

## Nature play



Timber logs - used for play  
and an informal barrier



Sandpit

**Contact Tract**

**Melbourne**

Level 6, 6 Riverside Quay, Southbank

VIC, Australia 3006

(03) 9429 6133

[melbourne@tract.net.au](mailto:melbourne@tract.net.au)