

- 1** **Silo Art Viewing Area** - provide seating opportunities under the shade of existing shade trees, opportunity for irrigated lawn area, accessible drinking water, small gathering areas, improved pedestrian connections, clear directional/interpretive signage and defined public / private realm. Define vehicle and pedestrian spaces with clear connections to pathways and vehicle access
- 2** **Wawunna Road Underpass** - Existing underpass, pedestrian connection and bike travel route to existing footpaths.

- 3** **Mill Street** - provide street tree planting along both north and south side of Mill Street, ensuring all landscape detailing considers VicTrack guidelines. Define edge of road with kerb and channel edging. Opportunity for long vehicle pullover bays (ie caravan etc). Provide separate movement for shared trail east-west with adjacent shade trees. Provide opportunities for wombat crossing of Mill Street for support of pedestrian north south connection
- 4** **Carparking** - short to medium carparking for up to 30 carpark spaces. Provide pedestrian access to north and south of carpark with multiple connections. Ensure shade trees are incorporated into layout. Incorporate shade structure over portion of carparking
- 5** **Shared trail east-west connection** - with shade trees on both sides, seating area and barrier to railway siding
- 6** **Indigenous grasslands/ woodlands** formed with flowing landform, indigenous planting, granitic gravel mulched mounds, meandering pathways, rest opportunities, gathering seats in stone or timber, provision of public art reflecting and telling the story of the region and continuing the story of the silos.
- 7** **Ephemeral Art Installation walk** - celebrating distant views of silos provide canvases for temporary and permanent art installations celebrating local and distant narratives. Unirrigated lawn and indigenous trees for shade and habitat

- 8** **Irrigated lawn with trees** - provide shade trees in lawn, irrigated kick-about areas, seating areas and viewing platform with views to silos, paths for strolling and reference railway siding tracks. Ensure all trees follow VicTrack landscape guidelines offsets
- 9** **Railway Avenue / Mill Street Underpass** - subject to VicTrack requirements for transport. Opportunity includes proposed underpass incorporating art, seating, retaining walls, shade trees, steps and inclusive ramp to link with open views to Mill Street. Incorporate open plaza used for gathering and viewing above retaining wall adjacent ramp. Incorporate lighting for safety and mood
- 10** **East west trail connections** - support existing overpass and north south links to ensure multiple movement patterns and enhanced livability for local residents
- 11** **Revegetation** - potential improved grade and growing conditions of batter slope - replant with indigenous vegetation with reference to bulokes and other woodland vegetation of the area

- 12** **Mill Street Treeplanting** - continue to support HRCC tree planting program to improve canopy cover throughout the municipality
- 13** **Future development** (for housing or openspace) subject to purchase from VicTrack
- 14** **Albert Street/ McPherson Street Underpass** - pedestrian connection and bike travel route to existing footpaths
- 15** **Wawunna Road Underpass** - Existing underpass, pedestrian connection and bike travel route to existing footpaths.
- 16** **Railway Avenue Tree planting** - continue to support HRCC tree planting program to improve canopy cover throughout the municipality
- 17** **VicTrack** - required for transport

GENERAL NOTES

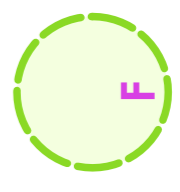
- Interpretive and directional signage to be located throughout the site
- Raise canopy of proposed trees as they mature to ensure all viewlines are maintained and no branches/branching below 2.5m from ground surface
- Existing Peppercorn trees to be managed by tree arborist to maintain plant health and frame views of silos
- Locate water refill stations throughout the site
- Main path 2500mm wide of concrete - all other paths of compacted granitic gravel
- Variety of seating styles - seats with backs and armrests, platforms, chaise lounge, rock boulders, sleepers, logs, concrete blocks etc
- Natural play elements to be incorporated into the site like logs, rocks, pebble creek, mounds, etc to invite stimulation of the senses, balance, proprioception and playful curiosity
- Provision of Public Art throughout the site to complement the site art and express the regions narrative
- Style of fencing to ensure views throughout the site are retained
- Plant selection to be predominately indigenous and native with a focus on species that are of sensory interest



LEGEND

- BUILDING & BOUNDARY**
 - BUILDING LAYOUT
 - SHADE STRUCTURE
 - EXISTING FENCE
 - POST / BOLLARD BARRIER
- VEGETATION**
 - EXISTING TREES TO BE RETAINED AND PROTECTED
 - INDIGENOUS SHADE TREES
 - DECIDUOUS SHADE TREES
 - EXOTIC LEGACY SHADE TREES
 - WOODLAND/GRASSLAND PLANTING
- PROPOSED GARDEN BEDS**
 - LAWN (NOT IRRIGATED)
 - LAWN (IRRIGATED)
- GROUND SURFACES**
 - CONCRETE PAVING
 - ASPHALT PAVING
 - COMPACTED GRANITIC SAND SURFACE
 - COMPACTED GRANITIC SAND SURFACE - ALTERNATIVE COLOUR
 - LOCALLY SOURCED DETAIL PAVING - WIMMERA RIVER FORMATION
 - BLOCK PAVER PAVING
- FURNITURE & FEATURES**
 - ROCK EDGING
 - TIMBER / COMPOSITE DECKING
 - VERTICAL LOG EDGING
 - WATER REFILL
 - PICNIC SETTING
- INTERPRETIVE / INFORMATION SIGNAGE**
 - GRADED MOUND
 - DIRECTIONAL SIGNAGE
- LIGHTING**
 - ARTISTIC ELEMENTS
 - BICYCLE RACK
 - BENCH SEATS - WITH BACKS & ARM RESTS
 - CHASE LOUNGE

- 15** **Wawunna Road Underpass** - Existing underpass, pedestrian connection and bike travel route to existing footpaths.
- 16** **Railway Avenue Tree planting** - continue to support HRCC tree planting program to improve canopy cover throughout the municipality
- 17** **VicTrack** - required for transport
- 18** **Railway Avenue / Mill Street Underpass** - subject to VicTrack requirements for transport. Opportunity includes proposed underpass incorporating art, seating, retaining walls, shade trees, steps and inclusive ramp to link with open views to Railway Avenue. Incorporate open plaza used for gathering and viewing. Incorporate lighting for safety and mood. Strengthen pedestrian connection to David Street with wombat crossing of Railway Avenue
- 19** **Irrigated lawn with trees** - subject to transport requirements by VicTrack opportunity exists to provide shade trees in lawn, seating areas and paths for strolling
- 20** **Horsham Railway Station** - continue to support existing railway station infrastructure - consider clearly defined pedestrian pathways and access to east-west shared trail. Planting in station precinct to reference heritage planting of Norfolk Island Pine, Canary Island Date Palms, Peppercorns and Bulokes
- 21** **Revegetation** - potential improved grade and growing conditions of batter slope - replant with indigenous vegetation with reference to bulokes
- 22** **Revegetation** - potential improved grade and growing conditions of batter slope - replant with indigenous vegetation with reference to bulokes
- 23** **East west trail connections** - support existing overpass and north south links to ensure multiple movement patterns and enhanced livability for local residents. Improve edges, maintenance and ownership of environment to communicate a clear definition of the public realm. Discourage crossing of tracks with improved pathways of safe travel
- 24** **Revegetation** - potential improved grade and growing conditions of batter slope - replant with indigenous vegetation with reference to bulokes. Review existing pathway and provide a upgraded route, revised slopes to reduce erosion and planting to minimise runoff. Reconsider existing fencing and improve general amenity for pedestrians
- 25** **Horsham Kaike Road Underpass** - Existing underpass, pedestrian connection and bike travel route to existing footpaths. Consider feasibility of wombat crossing, approach mirrors and approach pathways
- 26** **East West Connection** - potential east-west connection behind existing GRZ1. Provide safety offset to railway as required and 2.5m minimum pathway with shade trees subject to VicTrack landscape guidelines (fencing, offsets, species selection, etc.)
- 27** **Albert Street/ McPherson Street Underpass** - pedestrian connection and bike travel route to existing footpaths



REFER TO DETAIL SHEET MP04

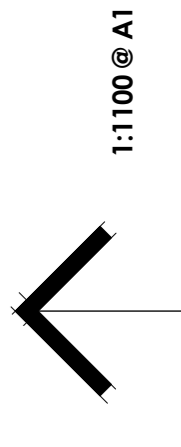
Landscapes Master Plan - Overarching Layout
Horsham Rail Corridor
Railway Avenue HORSHAM VIC 3400

08.01.2024
PN 226

PO Box 765 HORSHAM VIC 3402
041 041 7440
hcity@laimiga.com.au
Laimiga is a registered trademark of Laimiga Pty Ltd. All other trademarks, trade names, logos and other identifiers are the property of their respective owners. Levels and dimensions are approximate only. The drawing remains the property of the Landscape Architect. Copyright Laimiga, 2024/2025

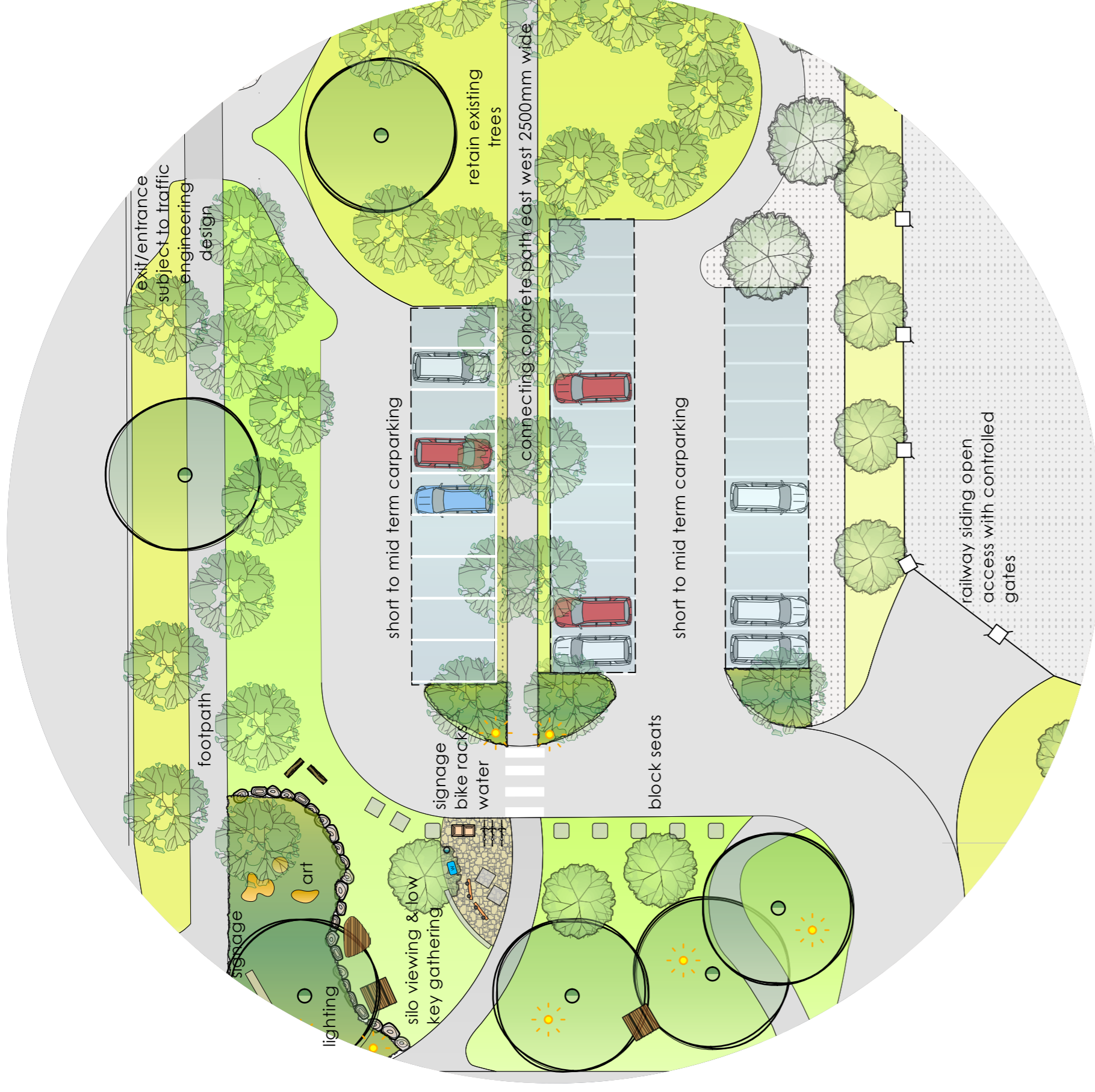
HORSHAM
Rural City Council

laimiga
design studio

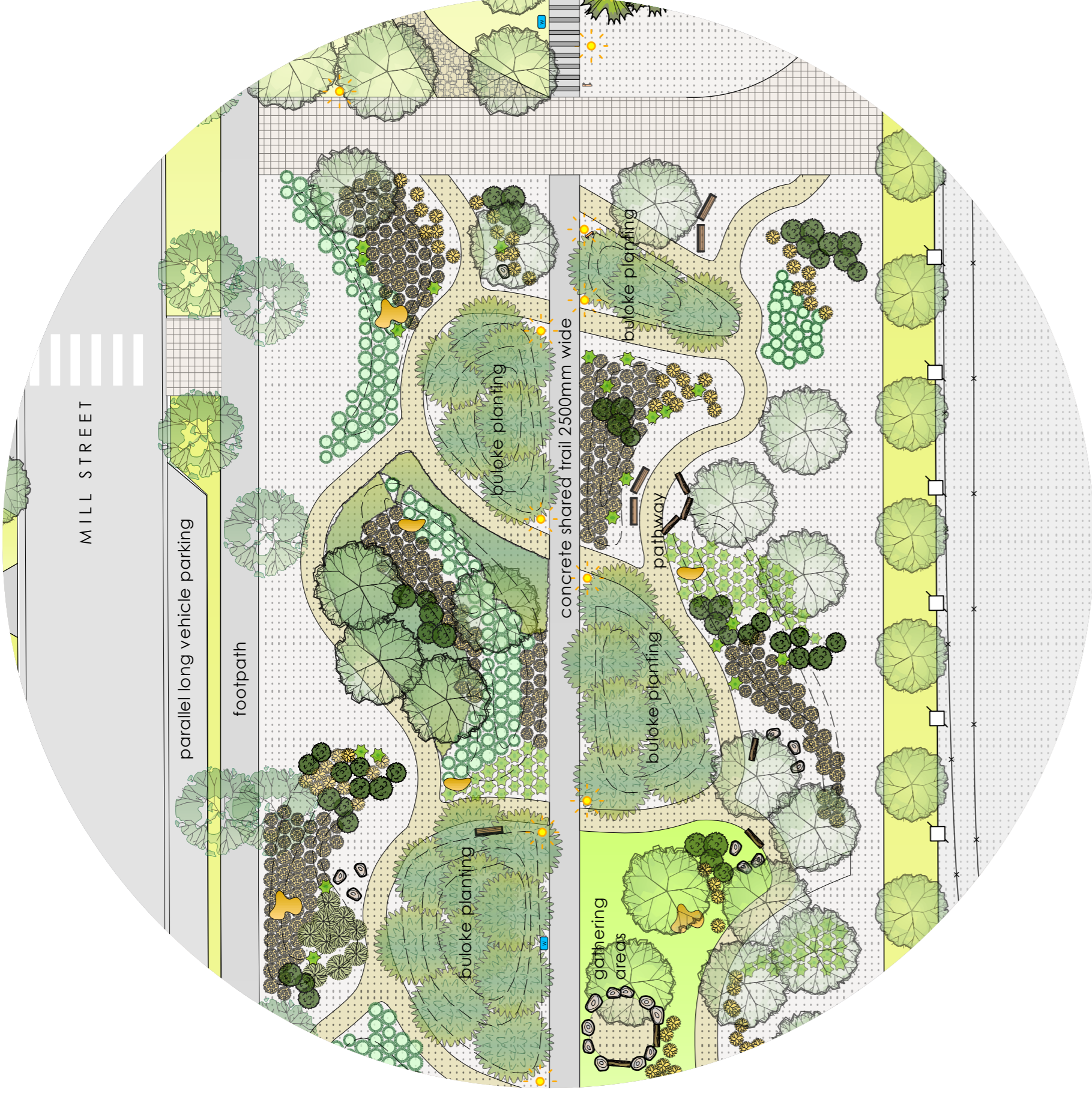


1:1100 @ A1

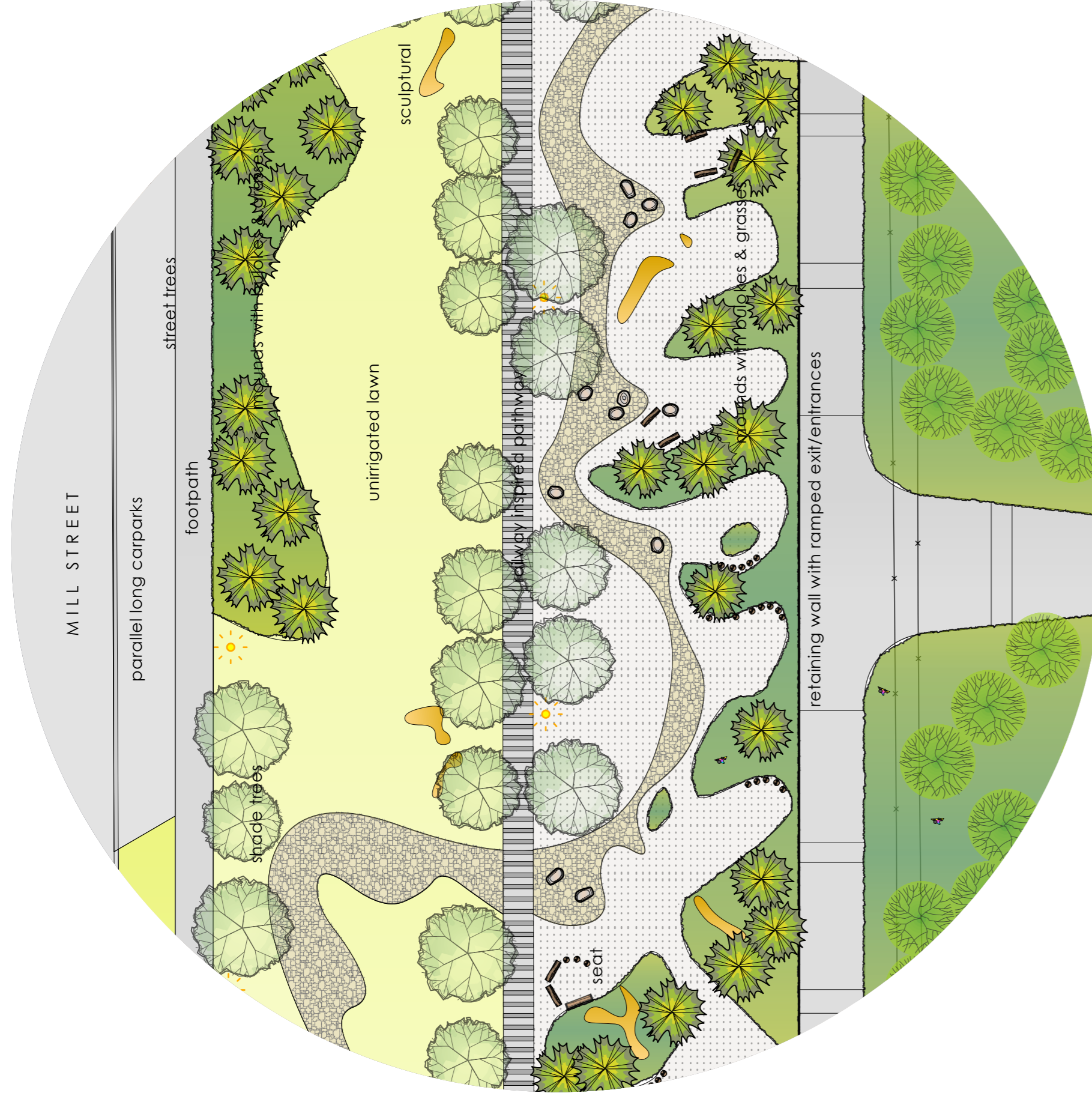
A DETAIL - SILO VIEWING & WESTERN CARPARK



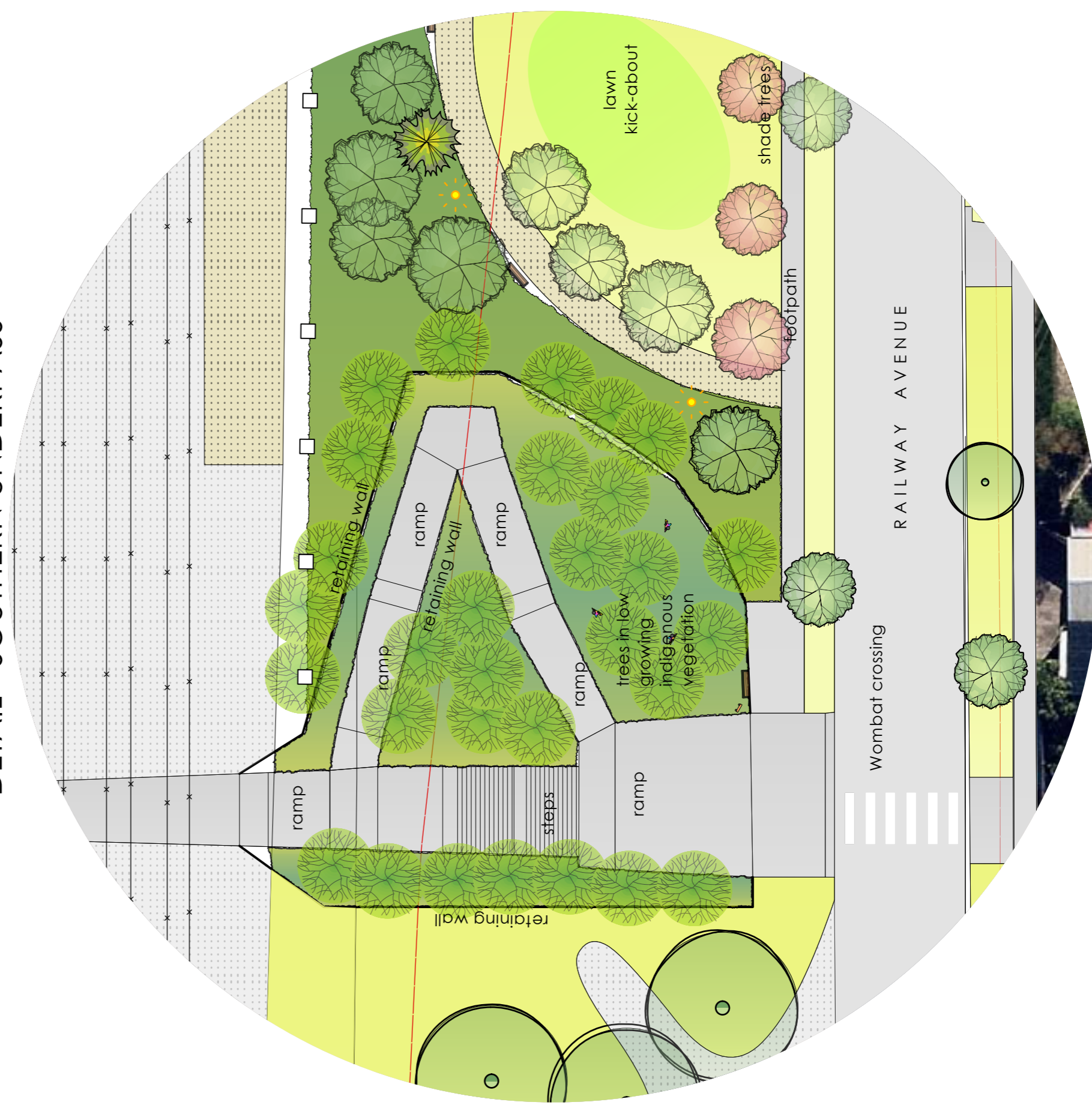
B DETAIL - WOODLAND/ GRASSLAND/ ART



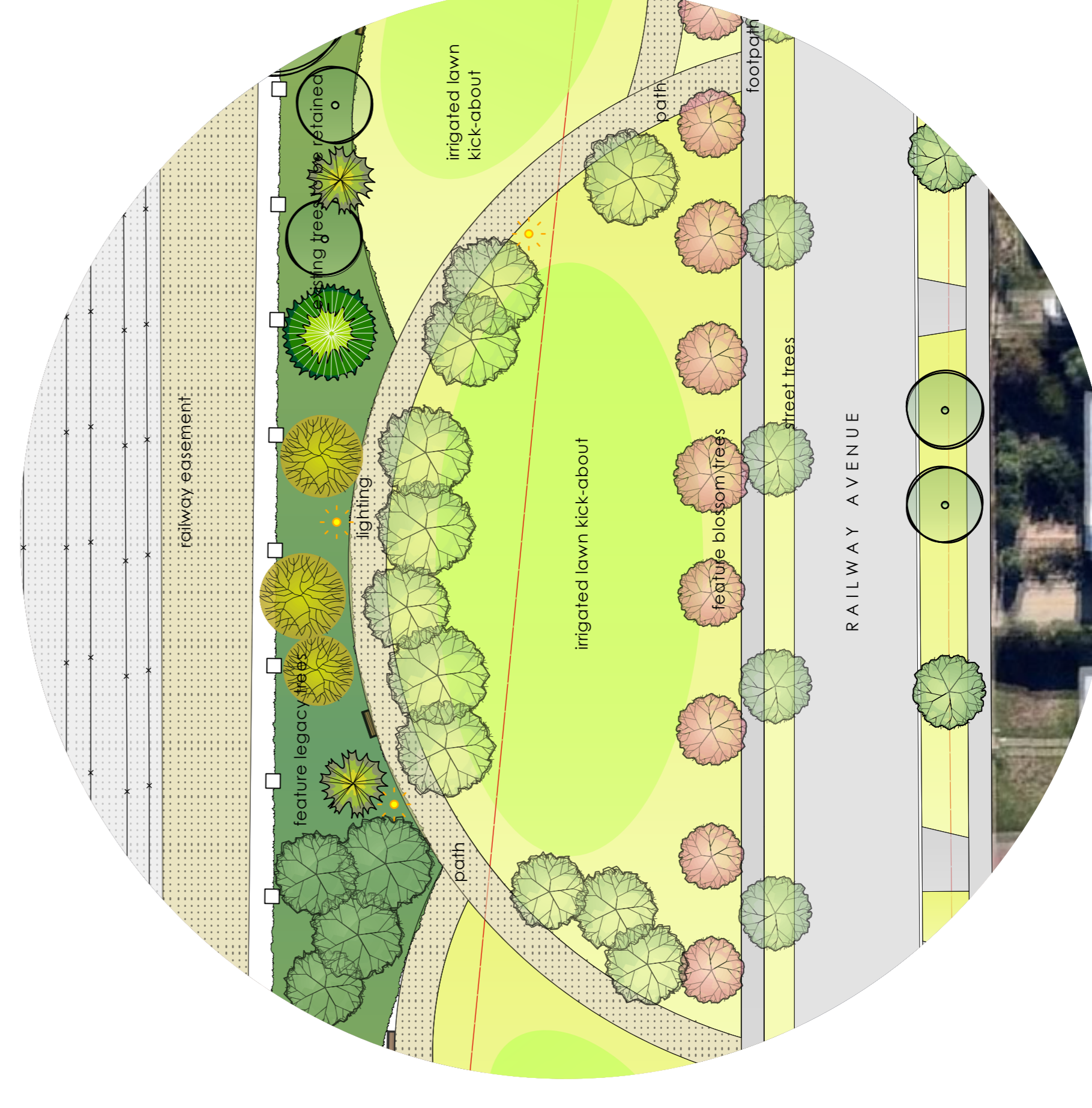
C DETAIL - NORTHERN UNDERPASS & EPHEMERAL ART



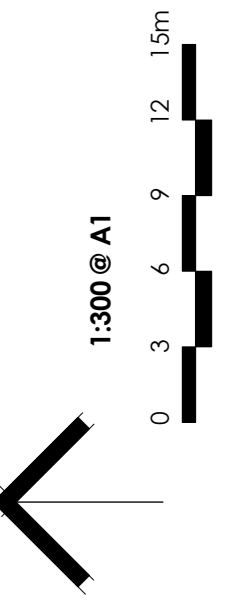
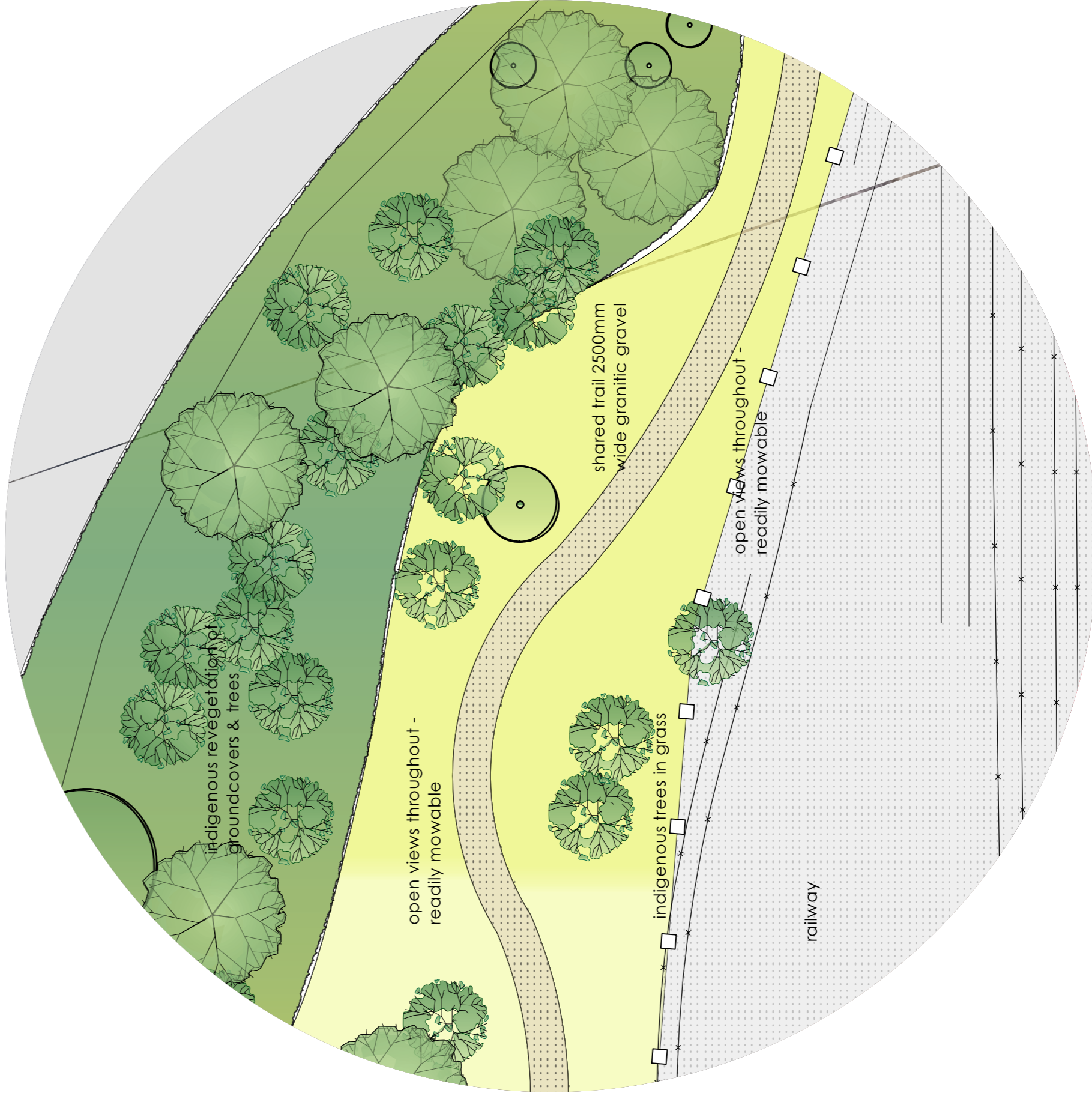
D DETAIL - SOUTHERN UNDERPASS



E DETAIL - PARKLAND & CONNECTIONS



F DETAIL - TYPICAL SHARED TRAIL & REVEGETATION



Landscape Master Plan - Details
Horsham Rail Corridor
 Railway Avenue HORSHAM VIC 3400

08.01.2024
 PN 226
 PO Box 765 HORSHAM VIC 3402
 041 041 2440
 lcity@laimiga.com.au
 All rights reserved. No part of this publication may be reproduced, stored in a retrieval system or transmitted in any form or by any means, electronic, mechanical, photocopying, recording, or by any information storage and retrieval system, without the prior written permission of Laimiga Design Studio.





Engagement report Rail Corridor Landscape Plan



January 2024

Report written by Sue Sheridan and Simone Dalton

Table of Contents

Background to the project	2
Collated and themed summary of the engagement.....	4
Engagement at Kalkee Road Childrens Hub.....	10
The Engagement Process	11
Frequently Asked Questions	11
Rail Corridor Landscape Plan Engagement	13
Media release	14
Survey (online and hardcopy)	15
Engagement Summary	166

Name of project Horsham Rail Corridor Draft Landscape Plan

Dates of engagement November 22-23 2023.

Purpose of engagement seek feedback and input on the draft rail corridor landscape plan.

Level of impact High

Community engagement goal Consult

Promise to the community: We will keep you informed, listen to and acknowledge concerns and aspirations and provide feedback on how public input influenced the decisions. We will seek feedback on drafts and proposals

Background to the project

The Horsham North Local Area Plan has been informed by previous background work, current research, investigation and valuable feedback from the Horsham North community, for which this plan is intended to serve. The *Horsham North Issues and Opportunities Paper (March 2022)* forms the basis and background work for the Plan, providing the analysis and context for a goal setting framework to guide future change within the precinct. The Rail Corridor forms a key part of the Horsham North Local Area Plan.

The Rail Corridor Landscape Plan provided designs of landscaping options within the rail corridor area. It took into consideration parking, connecting paths, plantings, art and the future provision of a bus terminal (should it be required). Connecting paths to David Street, the Horsham Railway Station, Wawunna Road and Kalkee Road were essential considerations in making the potential new underpass accessible and safe for all uses.

Designs for larger open space area applied a native 'bush' theme comprising larger native trees, shrubs, grasses and bush rocks. Landscaping designs aimed to bring the Silo Art, proposed new underpass and the railway station together.

Design for pedestrian lighting address safe levels of lighting when traveling through the underpass. Connecting paths with feature accent lighting within the underpass culverts and around the silo art could provide a visual experience and future talking points.

In keeping with the 'bush' theme depicted in the Silo Art illustrations, hard and soft landscape materials will be looked at to replicate the native and natural Australian bush look throughout the proposed landscape treatment. Native dryland plant species and natural materials will assist in long-term maintenance while also adding a sense of place and linkage between the Silo's and railway station.

The Horsham North Local Area Plan

Theme 2: Access and Connections - 7.5 Active Travel within the Rail Corridor

The rail corridor will provide a safe corridor for cyclists and pedestrians and facilitate convenient access for commuters.

The rail corridor was consistently the number one issue raised by the community due to its unmistakable presence as you enter Horsham North via the Kalkee Road Bridge. People are presented with a waste-land which is further compounded by the industrial blocks to the north.

Whilst the rail corridor is perhaps the biggest issue it is also the biggest opportunity to address in Horsham North with the potential for it to become a place of community focus. Connectivity can be significantly improved along both sides of the rail corridor, allowing freedom of movement and potentially avoiding the use of Kalkee Road as a crossing point.

Theme 3: Public and Open Spaces – 8.5 Shared Use of the Rail Corridor

The rail corridor is a long term opportunity to provide additional public open space that increases amenity and appearance for fronting neighbourhoods.

There is a degree of overlap with the Access & Connections Chapter, given that the rail corridor provides a range of opportunities that would benefit the community in terms of:

- *Pedestrian and cyclist connectivity*
- *Future public open space*
- *Public transport connectivity*
- *Enhanced character, identity and amenity for Horsham North*

10.6 THE RAIL CORRIDOR (These directions relate to Figure 8. Rail Corridor - Public + Open Spaces)

The following directions are set out for the Rail corridor to ensure coordinated future planning:

Action listed in the plan	Status Sept 2023
Continue discussions with VicTrack regarding the long-term use and acquisition of the available sections (lots) within the Rail Corridor, owned by VicTrack.	In progress
Ensure that the rail corridor is suitably remediated for future public use.	To occur once land is purchased
Integrate the design of all interfaces with local streets and footpaths (including Mill Street and Railway Avenue)	Included in draft landscape plan
Undertake a landscape plan for the entirety of the Rail Corridor (VicTrack land) in order to further undertake detailed design of the four sections of land to maximise their open space, pedestrian/cyclist and public transport connectivity opportunities (dependent on contamination, remediation and land required for train operations)	Included in draft landscape plan
Liaise with the Department of Transport and Planning (DTP) regarding the establishment of a new underpass Furthermore, continue to advocate for the re-establishment of regional passenger rail services.	Ongoing
Engage a landscape design professional to undertake landscape plans for each of the four sections of the VicTrack land, ensuring that public access and connectivity are the number one priority.	Included in draft landscape plan
Look to international examples (such as the "High Line" in New York City) and local examples (such as the Level Crossing Removal Project) as a precedent for the conversion of former rail corridors into attractive and popular public spaces.	Included in draft landscape plan?

Rail Underpass Investigation Horsham North Local Area Plan

A third rail underpass location in proximity to the railway station has been investigated and is considered feasible from a design perspective. Funding for this third underpass will continue to be investigated as part of the Rail Corridor Landscape Plan.

HRCC strategic and operational plans (beyond Horsham North Local Area Plan) which connect to the Rail Corridor

Plan	Summary	Date
Greening Greater Horsham	A municipal tree strategy	2021-2031
HRCC Council Plan	Liveability, accessibility sustainability and community	2021-2024
Horsham Municipal and Shared Path Plan 2023-2033	Under Development	Consultation due in Feb 2024
Open Spaces Strategy	Open Space Strategy	2029
HRCC Health and Wellbeing Plan	Active living, social connectivity, safety priorities	2021-2025

Collated and themed summary of the engagement.

The Rail Corridor Landscape Plan provided designs of landscaping options within the rail corridor area. It took into consideration parking, connecting paths, plantings, art and the future provision of a bus terminal (should it be required). Connecting paths to David Street, the Horsham Railway Station, Wawunna Road and Kalkee Road were essential considerations in making the potential new underpass accessible and safe for all uses.

The Rail Corridor Landscape Plan was presented to the community over a 2 week period in November 2023. Seeking feedback by way of a survey and face to face sessions.

40 people filled in a survey 19 people attended face to face sessions held at Kalkee Road Children's Hub.

95% of respondents see it as visually appealing

90% say it provides good connections

87% think it has enough open space

82 % think it will be safer

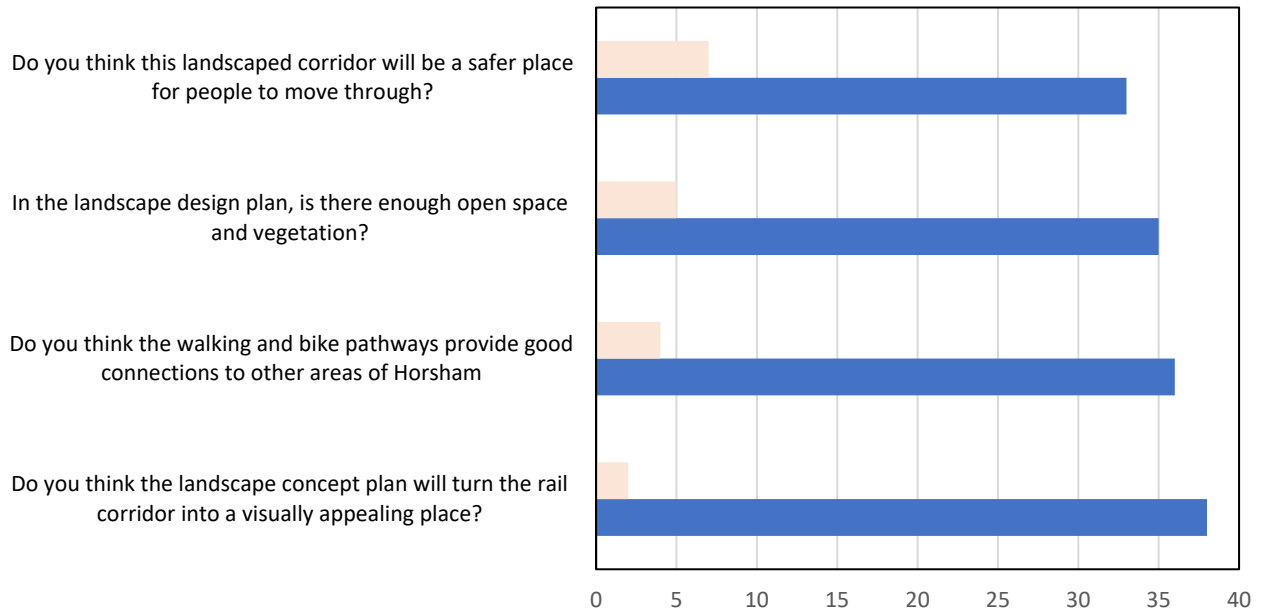
Overwhelming Support for the project:

Comments on the plan:

1. No issues with what is being proposed
2. Thank you for all you are doing, keep going
3. Congratulations on the longer-term planning
4. Like sound of another underpass
5. Parking for silo art also sounds good
6. Stop asking for feedback and do something
7. If this proposal is approved can it happen quickly. At the moment it is a complete eyesore and is embarrassing.
8. About time this got moving.
9. Thanks for your efforts Sue & team - also for the opportunity to contribute
10. Good to see something being done
11. About time this got moving.
12. Good to see something being done
13. I think that it is a fabulous plan
14. The proposed landscaping will be wonderful and passengers on the train will be very impressed by Horsham that cannot be said for now.
15. Love the different types of plant;

40 survey Responses were received further breakdown is below:

Survey Responses



	Do you think the landscape concept plan will turn the rail corridor into a visually appealing place?	Do you think the walking and bike pathways provide good connections to other areas of Horsham	In the landscape design plan, is there enough open space and vegetation?	Do you think this landscaped corridor will be a safer place for people to move through?
No	2	4	5	7
yes	38	36	35	33

■ No ■ yes

Comments and responses to various themes via the Survey:

Visual appeal?	Response
Too busy;	Noted
Need open space for Wimmera;	There are areas of open space included through the design
not reflective of the area;	Noted
Consider opening up the design;	Trees will be planted to ensure line of sight along pathways, with open green areas
Signage and silo viewing	
Signs at silo need to be situated so that people know the cockatoo mural is there too;	Wayfinding signs will be installed throughout the site
consider an information board at silo;	Yes, will be installed including a map of interest points, public toilets, walking and cycling tracks
Request viewing platform for Solo art	This will be investigated and we will look to uplift the canopy of the Peppercorn trees
Suggest signage highlighting paths to police paddock	Yes, will be installed including a map of interest points, public toilets, walking and cycling tracks
Peppercorn trees block silo view;	We will look to uplift the canopy of the Peppercorn trees
Need clear line of sight to the silo	Noted
Pathways and connectivity?	
Fencing	
Will safety fencing impact the walkways?	Fencing will be part of the process but also designed for line of sight, safety and amenity
Need safe fence between pathways/area and the railway to protect adventurous children;	Fencing will be part of the process but also designed for line of sight, safety and amenity
Fence along Mill street needs to be replaced with new one or trees.	Fencing will be part of the process but also designed for line of sight, safety and amenity
Footpaths	
Better places in Horsham for footpaths;	Mapping of footpaths is in progress. Refer protocol for at least one footpath on every street
Limited paths around town area;	Mapping of footpaths is in progress. Refer protocol for at least one footpath on every street
Areas in the south don't have footpaths outside houses eg Kalima Avenue.	Mapping of footpaths is in progress. Refer protocol for at least one footpath on every street
Are existing underpasses staying?	Yes, council will continue to maintain both underpasses. With a view to seek funding for a third DDA compliant underpass.
Budget issues	
Money should be spent elsewhere:	Noted
Population too small for such an expense;	Noted
better places than beside railway to develop;	Under the Horsham North Local Area Plan, which Council has endorsed, this is a long-standing wish of community to improve the visual appeal of this large area of land.
Should be no expense spared so the design can be sensationally better and put Horsham on the map!	We believe the concept design captures the aim for the area
Design?	

Plants	
What about a sensory garden?	Will be considered
Think long term with plants; this area lends itself to larger trees. Tree options could be silky oaks, jacaranda (in cluster) melaleucas and consider angles for shade (5m). Consider whether lighting might damage nearby trees (eg tree in gardens which had light on it);	Tree strategy has guidelines which we will follow, types of plantings will be considered.
Consider creating an avenue of flowering trees in Mill street and Railway avenue - eg Cootamundra & Golden Wattle, Crepe Myrtle, Flame tree, Jacaranda etc; .	Tree strategy has guidelines which we will follow, types of plantings will be considered.
Love the fact that crushed Granite powder/soil/dust is used for pathways, corten steel edging to garden beds, native grasses including Billy Buttons/Drumsticks will be used through the woodlands & grasslands throughout the precinct;	Noted
The native design, sensory, & therapeutic elements also lend itself to encouraging local groups including primary schools & kinder to use space for bush kinder & experiential learning sessions;	Nature play is a realistic possibility as this would lend itself to the natural grassland and woodland design. This could include logs, rocks and stepping stones incorporated into the final design.
Urban Landcare/ Wimmera Nature society	Noted
Will need a lot of plants;	Noted
Use of non-indigenous Australian plants will greatly increase the variety to add to indigenous species	Noted
Tree heights – will they allow for good line of sight.	Noted and being incorporated into updated design
Avoid groups of trees to increase safety.	Noted and being incorporated into updated design
Lack of playground	
Playground needed;	Open space strategy is being developed and will audit all play spaces and current and future needs
This would be a great place for children to play;	Nature play would lend itself to the natural grassland and woodland design. This could include logs, rocks and stepping stones incorporated into the final design which would make great nature play
Play equipment would be nice;	See above
Train themes play equipment at silos.	See above
No playground included.	See above
Playground near Mill/Albert Street area be nice;	See above
would be good to have play area involved;	See above
Playground for younger kids – take out one of the kick-about to do this	See above
Child play areas/nature play;	Nature play would lend itself to the natural grassland and woodland design. This could include logs, rocks and stepping stones incorporated into the final design which would make great nature play.
Lack of Eating area	
Need picnic tables and seating for visitors to silo – possibly BBQ (Eg Wodonga);	This area is considered as a transit zone and not a destination for longer stays. Most silo visits last about 10 minutes and the design is seen as a walking/riding area for Horsham community and visitors. There are a number of eating outlets not far away

	in the May Park precinct. A map will also be located in the area.
BBQs be nice;	See above
BBQ for people visiting the silos;	See above
Toilets	
Public toilets would be nice;	There are public toilets at May Park and Dudley Cornell. There are few houses nearby and passive surveillance is very limited. The silo and corridor is not an ideal location for toilets because of safety concerns.
Need public toilets near silo art – none in north Horsham;	See above
Need toilets for tourists and locals to use;	The silo and corridor is not an ideal location for toilets because of safety concerns and length of stay is average of 10 minutes
Toilets near silo.	The silo and corridor is not an ideal location for toilets because of safety concerns and length of stay is average of 10 minutes
Want toilets.	See above
toilets; toilets; consider Maybe incorporate use at Railway station with signage;	Return of passenger rail is a long-term goal of the HRCC and community. While we have little control of when this will happen its return would require facilities to be provided at the railway station.
Water	
How about underground water storage?	This is being investigated
Needs drinking fountain;	Drinking / filling station will be added to the plan
Water filling station;	See above
Water stations for people and pets	See above
Other recreational pursuits	
Like to see Half basketball court;	As the corridor will be more of a landscape transit area, not really the right location
want to see three kickabout area;	There is a large irrigated lawn area
Like to see outdoor exercise equipment;	This is being considered
outdoor games area.	There is a large irrigated lawn area
Like idea of big lawn area;	There is a large irrigated lawn area
Like to see Off leash area	Off leash areas are currently being audited and reviewed for future needs
Allow ample spacing for caravans & campervans for parking for silo viewing;	There is considerable parking in the plan
The no through road section of Wawunna Road in front of the Silo art may be considered a potential events area - consider dedicated vehicle spots & appropriate power supply in parking area near Silo art for food/event vehicles/caravans;	This area is considered as a transit zone and not a destination for longer stays. Most silo visits last about 10 minutes and the design is seen as a walking/riding area for Horsham community and visitors. There are a number of eating outlets not far away in the May Park precinct. A map will also be located in the area.
For the future development zones consider the Nightingale Housing model - www.nightingalehousing.org - this model of housing may also be considered by the CAD reference group for revitalizing the city precinct with apartment living as well;	Outside of scope
Gathering space	

Adults/kids meeting space would be good;	A gathering space will be incorporated into the plan
Allow spots throughout the green areas for shade, timber & stone sitting, meditating & recharging, reading;	Will incorporate. The numerous trees will provide plenty of shade areas and the area will include seating
There should be an area where there is a meeting place/s and seats that surround it.	A gathering space is being incorporated. The numerous trees will provide plenty of shade areas and the area will include seating
How about piping the sounds of nature at the site to make it a relaxing place	Will consider
consider a public art competition with residency for a project;	There will be provision for Art in the design
Opportunity for aboriginal art and interpretation.	There will be provision for Art in the design
Need Seats	Multiple different seat options will be incorporated in the space
Other public activities ideas	
Soundshell;	The community has a large soundshell near the Wimmera River
Space for farmer's market;	There is unlikely to be sufficient room, access or parking for this activity. Dudley may be a better option when developed under the Multisport plan
Creating greater safety?	
Suggested design safety changes	
Suggestion to enter silo car park from Mills Street (3 on map) rather than Wawunna Rd); Remove bitumen at Wawunna Rd/Mill street intersection and landscape in front of silo art to allow pedestrians to safely walk there.	Noted and will be investigated, we will address the line marking to make safer for Pedestrians
Crossing in Mills Street beside busy fuel business; Truck access is an issue for Lowes BP depot and also the Wilkies trucks	Noted and will be amended
Safer to get rid of parking outside Lowes in Mills Street.	Noted and will be amended
Spend a day in Mill street and watch the traffic before deciding on final design	Traffic count from Mill Street being revisited
Need to allow access to emergency vehicles to this space for safety;	The site is easy to access
Need access for emergency vehicles.	See above
Need wider walkways and straighter paths	Noted and being incorporated into updated design
Surveillance cameras in main areas	To be investigated
Don't need that many long bays in Mill Street.	Noted and being incorporated into updated design
Concern about crossing Kalkee Road at the Linnert Street intersection and need for roundabout (maybe be outside of scope)	Outside the scope of this project
Lighting	
Lighting needed.	There will be lighting
Install sensor lights as crime deterrent;	See above
Need good lighting and good line of sight for safety in corridor;	See above
ensure ample solar powered lighting	To be investigated on this site
Connectivity safety	
Include safe bike connections to CBD – Kalkee Rd to May Park,	Bike and connectivity strategy has been considered with this plan
Albert St underpass does not meet disability; like improvements in Wawunna Road underpass.	Correct, we are unable to make our current underpasses compliant due to a variety of reasons but a new DDA underpass is proposed
Need a wombat crossing at the Railway Ave/Kalkee Rd underpass	Will look at how we address this
Other	
The area is unsafe because of who lives there.	Aim is to improve the area for residence and visitors

Concern about fire risk in corridor. Fire hazard concern; Can you also maintain the Vic Trac land even though you don't maintain it	Ongoing issue and one of the reasons Council would like to have access to the land.
Safety is something we need to be aware	Noted
Other comments/suggestions	
RV Dump? Would this be a good location as long vehicles come there	Noted
Future proof the design to allow the development of a new railway station for the resumption of rail services to Horsham;	Return of passenger railway is a priority and this design takes the goal into consideration. Decisions around this return are beyond the scope of this project.
Consider collaborating with VicTrack to restoring existing railway station building as a community facility - this facility can then be hired out to the community for events & user groups;	The Station is owned by VicTrack and now used by U3A for community purposes.
10 . Zoning questions around land in Mill Street, questions about land in other parts of corridor	These were answered by Planning Department
Opportunities for grants from mining companies.	This has been noted as an opportunity
What happens to the shed and house right beside the underpass?	(Not sure which one they mean)

Engagement at Kalkee Road Childrens Hub

November 22 and 23 2023

Four sessions 11am- 1.30pm and 5pm -7.30pm both days.

Comments received:

Visual appeal

- Looks great would be great to see if happen
- No issues with what is being proposed
- Thank you for all you are doing, keep going

Pathways and connections

- Question about whether Wawunna Rd and Albert St underpasses were staying
- Truck access is an issue for Lowes BP depot and also the Wilkies trucks
- Long bay we don't need as many bays along Mill Street

Landscape design and open space

- Need for signage to located or created that will ensure people know the cockatoo mural is on the silo
- Would like a space for Farmers Market
- Space for car shows and reasons to come to the North
- groups of trees - no group tree plantings for safely
- Question about potential kiosk opportunity at the silos
- Please think long term with planting so they don't have to be lopped as others have recently. It is the perfect areas to be able to have some large trees.

Potential Specimen trees:-

- Flame trees
- Grevillia Robuster (silky oaks)
- Jacaranda – maybe several in a cluster
- Melaleucas /paperbarks have also done well as street trees

- **Please consider 5m angles for warmer** weather so shaded areas will be possible as trees grow
- **Please research this area- Botanic Gardens river end of Firebrace Street** – whether long term lighting direct on trees is harmful to the long-term health of trees
- No toilet or BBQ's and Playgrounds
- Question the tree heights for safety and line of site
- Peppercorn trees block the view
- viewing platform for Silo art
- Need toilets
- There should be an area where there is a meeting place/s and seats that surround it.
- Opportunity for aboriginal art and interpretation.

Safety

- Concerns about security - will there be lighting and good line of sight in the corridor?
- Concerns about safety in existing underpasses
- Safety is something we need to be aware
- Outdoor exercise equipment
- Outdoor games area
- Refill Station for water
- Great to see an area of lawn to have a kick
- Concerns about fire risk this year and questions about responsibilities for managing the landscape

Other

- Question about the zoning of the land on the northern side of Mill Street
- Zoning questions relating to Mill Street
- Bob Redden attended - Wednesday night – concerns about shelter at the railways station and lack of public toilets – out of scope
- RV Dump? Would this be a good location as long vehicles come there
- Can you also maintain the VicTrack land even though you don't maintain it
- Mine funding/grant opportunities
- Urban Landcare/ Wimmera Nature society
- Concern about crossing Kalkee Road at the Linnert Street intersection and need for roundabout

The Engagement Process

A series of Frequently Asked Questions were developed and approved by VicTrack. These were used in displays and posted on the HRCC website.

Frequently Asked Questions

What is this project

The landscape plan to transform part of the industrial rail corridor into public open space – as outlined in the Horsham North Local Area Plan, released in May 2023 .

- It will open up beautify this former industrial area
- It will help connect Horsham's north and south and east and west with walking and bike routes.
- It will include paths, trees, shrubs and grasses, a car park, art and storytelling
- It will improve safety for walkers and cyclists

Where is it?

- It covers an area stretching along the railway line from Albert Street to Wawunna Road with the main focus of landscaping north of the railway line between Wawunna Road and Kalkee Road overpass.
- The plan also includes areas near the railway station and east to towards MacPherson street.

- Some land remains in rail use and the areas for future public use are still to be acquired by HRCC

Why now when you don't have all the land?

- The community has clearly told us that this area is unsightly and needs urgent work
- This work will connect walking and bike paths and make it safer for people to travel north-south and east-west along the corridor.
- It also meets the community's need for more public open space

What can we have on site?

- Wide walking and cycling paths for people to travel through the area
- Smaller paths to wander through the woodlands and grasslands
- A green area for recreation
- Trees to provide shade
- Art installations
- Signage and storytelling
- Seats
- A car park for visitors viewing the silo art

What are the limitations

- Part of the corridor is used for rail and will remain off limits to the public
- Historic fuel deliveries created soil contamination which while recently cleaned up, still limits activities at the site including playgrounds
- Not all land can be acquired by HRCC for public use
- We do not have funds to build a third underpass at David Street.

How does this align with the Horsham North Local Area Plan?

The Landscape plan was designed based on feedback and recommendations from the Horsham North Local Area Plan including:

- Remediating the rail corridor for public use
- Creating a landscape plan with walking and cycling connectivity and open space as priorities
- Working with government to get a new modern underpass for the corridor
- Managing the risks of contaminated land
- Building upon the Silo Art through public art projects
- Identifying and addressing barriers to pedestrian movement and safety
- Providing infrastructure that encourages active transport
- Improving pedestrian and cycling connectivity across the rail corridor

What are the benefits of this Rail Corridor Landscaping?

The area will now

- be upgraded to a place that looks and feels attractive
- provide more public open space
- connect north and south and east and west Horsham
- provide shade and flora and fauna habitat
- be safe for walkers and cyclists
- be a place for art and storytelling
-

Why now?

- Negotiations are getting closer for HRCC to finally be able to start progressively buying some parcels of land in the rail corridor
- Contamination clean ups have been completed on some of the land
- Based on what you said in Horsham North Local Area Plan consultations – we have created this concept for landscaping the area

- This is the final stage – checking with the community that we have not missed anything before the detailed plan is finalised

Please look at the plan and provide some feedback on

- Whether you think the landscape concept plan will turn the rail corridor into a visually appealing place?
- Whether you think the walking and bike pathways provide good connections to other areas of Horsham?
- In the landscape design plan, is there enough open space and vegetation?
- Whether you think this landscaped corridor will be a safer place for people to move through?
- Is there anything else you want to say?

What happens after this feedback process?

- Based on the community feedback, council will make any necessary additions or adjustments to the concept plan
- Once this is finalised, the project will be costed and then council will determine how and when it will be funded and the landscaping carried out.

Rail Corridor Landscape Plan Engagement

Council appreciates the feedback provided and submissions will be considered and any changes to the plan will be made.

The plan transforms the disused area from wasteland into a series of connected paths, woodlands, green areas and a car park for the silo viewing. It provides safer walking and riding options, especially along Mills Street and includes the planting of trees, shrubs and grasses to beautify the site and provide valuable shade for pedestrians and riders travelling through the area.

The plan is compatible with any return for passenger rail and includes provisions for a third, accessible underpass to be built near David Street, when funding is secured.

There are various limitations on the plan including:

- The area sits beside an operational railway line which limits some activities and access to some areas
- Historic contamination from fuel deliveries by rail has been remediated (or cleaned up), but this still limits some land uses in the area
- HRCC is still working to buy land in the corridor so all of the corridor may not be developed at once
- Some parts of the corridor will continue to be used for rail purposes
- We don't yet have funds to construct the modern underpass near David Street
- The project can't be costed until after this feedback process.

Media release

Council seeking feedback on rail corridor landscape design

Published on 14 November 2023

Horsham Rural City Council has unveiled a plan to transform the city's rail corridor into several hectares of interconnected paths, plants, public art and storytelling.

A landscape concept plan is the next step in the community's long-running bid to transform the industrial rail corridor into useable open public space.

"Council will hold public feedback sessions on November 22 and 23 to ensure the design captures all of the community's suggestions and concerns.

HRCC Chief Executive Officer Sunil Bhalla said design details were largely based on the extensive community feedback



provided as part of the Horsham North Local Area Plan, released in May this year, together with known site limitations.

"The appearance of the rail corridor was consistently the number one issue raised by the community. People told us they want this area to look nicer, feel safer and better connect north and south Horsham," he said.

"Council committed in the Horsham North Local Area Plan to complete a Rail Corridor Landscape Plan and to seek feedback from the community on the design.

"This landscape design includes a series of connecting paths for walkers and cyclists which provide an alternative route to busy roads such as Mill Street. There are also smaller trails winding through the corridor to explore woodlands planted within the area.

"There will also be a carpark for 39 cars near the Silo Art installation with seats and viewing areas and opportunities across the corridor for public art and storytelling, Mr Bhalla said.

"Importantly, the plan includes landscaping to support a new proposed rail underpass linking to the northern end of David Street, which, if funded, would provide a safer pedestrian route from the north to the south of the city and will also be compatible for any return of passenger rail in the future."

Mr Bhalla said while Council was still negotiating the purchase of land parcels in a key area of the corridor north of the railway line, remediation work on contaminated soils has been completed for commercial/industrial use.

“There is a lot of work going on behind the scenes for the rail corridor and it is important to have this landscaping plan finalised so we can be ready to move to the next stage of the upgrade process.

“I encourage residents to take the time to view the landscape design and provide feedback so we can produce our final plan and then move forward on this important Horsham project.”

The Landscape Plan feedback sessions will be held at Kalkee Road Children’s Hub on November 22 and 23 from 11am-1.30pm and 5pm to 7.30pm both days.

People can also view the plan at the HRCC offices and complete an online survey.

Survey (online and hardcopy)

Council sort feedback on a draft rail corridor landscape design via a survey. The survey closed at 5pm on Thursday 30 November.

The community can view the plan at the HRCC offices and could complete an online survey.

Horsham Rail Corridor Landscape Plan

About the plan. Thanks for doing this quick survey as feedback on the Rail Corridor concept landscape plan.

Creating this landscape plan is an action that came out of the Horsham North Local Area Plan (HNLP) released in May this year.

Its contents are guided by the many issues and ideas community talked about during discussions around the HNLP.

We have already done a lot of talking so just want to ask for some quick feedback to make sure we have responded to all matters previously raised.

Information collected by this survey will be used to improve the landscape plan. Horsham Rural City Council's privacy policy can be read here: [Privacy Policy](#)

About you

First name.....

Last name.....

Your email.....

Do you live in Horsham North

Yes.....

No.....

Age

- Under 15
- 15-24
- 25-34
- 35-44
- 45-54
- 55-64
- 65+
- Prefer not to say

Gender

- Man
- Woman
- Self-identified, please specify
- Prefer not to say

Your feedback

Do you think the landscape concept plan will turn the rail corridor into a visually appealing place?

- Yes
- No

Do you think the walking and bike pathways provide good connections to other areas of Horsham?

- Yes
- No

In the landscape design plan, is there enough open space and vegetation?

- Yes
- No

Do you think this landscaped corridor will be a safer place for people to move through?

- Yes
- No

Is there anything else you want to say?

Engagement Summary

Overwhelmingly council has heard from the community that the rail corridor needs landscaping with comments *“If this proposal is approved can it happen quickly. At the moment it is a complete eyesore and is embarrassing.”* And *“About time this got moving.”* The landscape plan will be amended and subject to Council approval works will progress as quickly as land access and funding will allow.

1. PURPOSE

Horsham Rural City Council (HRCC) provides annual assistance to a range of community groups on a recurrent basis to support the activities of these groups within the municipality. These community donations are included in the Council Budget adopted each year.

This policy provides the framework for Council's annual donations program including where corporate donations are made to support Council programs.

2. INTRODUCTION

In each annual budget process, HRCC allocates recurrent funding assistance to support the activities of a range of community organisations that provide community facilities, services, social support and recreational opportunities for the municipality.

From time to time, Council may also receive donations or sponsorship from corporate organisations to support Council programs.

This policy outlines the rationale for community donations, eligibility, donation requests, assessment criteria, donation approval (including corporate donations or sponsorship) and payment processes.

3. SCOPE

This policy is applicable to community groups that operate in or provide activities for the benefit of the residents of Horsham Rural City Council and receive a donation from Council. The policy also applies to corporate organisations seeking to donate to support Council programs

4. PRINCIPLES

HRCC provides a range of community donations to local community groups. Council recognises there are many community groups that work to make our municipality a better place to 'live, work and play'. The key principle is that the donation supports recurrent operational aspects of organisations within our community that provide community facilities, services or recreational activities that benefit the health and wellbeing of residents of our municipality. The donations program supports Theme 1 of the Council Plan to "*Develop the municipality as a diverse, inclusive and vibrant community*".

4.1 Eligibility

Community donations are allocated under the following categories:

A. Recreation Reserve – maintenance of grass playing surfaces

This is an annual cash donation to assist recreation reserve Committees of Management maintain the standard of watered grass playing surfaces for the benefit of wider community use. Donations are based on whether a recreation reserve maintains a **watered** grass playing surface for competition sport during summer and/or winter, for example, a reserve that is watered for **both** summer and winter competition will receive two allocations. A reserve that is watered for **either** summer or winter will receive one allocation.

A smaller pre-determined allocation is provided for recreation reserves with no competition sport or that have a **non-watered** grass playing surface.

Recreation reserves that receive direct support and maintenance via Council recreation staff are not

eligible for recurrent cash donations.

B. Kindergartens (Council owned) – annual maintenance

Council provides a general maintenance allocation to all Council-owned kindergartens.

Council also provides a recurrent grant to support the operations of the Horsham District Kindergarten Association (Emerge).

C. Public Halls – insurance

Council provides Industrial Special Risk (ISR) insurance for public halls. ISR insurance essentially provides property damage cover for buildings and (in cases where these have previously been nominated and accepted by Council) contents. In addition, Council also provides public liability cover for “casual” (and some designated “regular”) hirers of community halls, together with public liability insurance cover for the delegated activities of the HRCC Community Halls Community Asset Committee (noting that public liability is provided through the Crown, for any Crown Land Committees of Management).

D. Charitable Retail Premises – refund of rate payments

In recognition of the outstanding community service work provided to our municipality, Council refunds payments for the general rate and municipal charge levied against eligible charitable retail premises.

E. Sponsorship of Prizes

Council sponsors a number of annual prizes to support the activities of schools and local events.

F. Specific Other Donations

Council recognises the important role that certain not-for-profit organisations play within our community to enhance the physical, recreational and/or social attributes of our municipality, through an annual cash donation.

The eligibility and amount of community donations is reviewed each year as part of Council’s annual budget process. A full list of yearly community donations is included in Council’s Annual Budget (available on the Horsham Rural City Council website – www.hrcc.vic.gov.au).

Note - groups receiving a community donation may also apply under the Community Grants Program if they require cash support for a specific project.

4.2 Application for a Community Donation

The allocation of recurrent community donations are only made to community groups in accordance with Section 4.1. If a community group believes that they fit under one of the eligible categories for a community donation or if a current donation recipient requests a variation, they may lodge a request in writing to:

Chief Executive Officer
Horsham Rural City Council
PO Box 511
HORSHAM Vic 3402

The request must provide details of their organisation, including current membership, and details of community facilities and services provided including public access. The request must state the reasons why the organisation is seeking on-going operational support from Council.

The Chief Executive Officer will make a recommendation to Council. Council must approve any new community donations as part of the annual budget process.

4.3 Payment of a Community Donation

Once approved and listed in Council's adopted budget for a financial year, the grant funds will be paid in October of that year, unless an alternative payment schedule is requested and approved by Council's Chief Financial Officer.

5. CORPORATE DONATIONS

Council may choose to receive corporate donations or sponsorship that support Council programs and Theme 1 of the Council Plan to "*Develop the municipality as a diverse, inclusive and vibrant community*".

Any donations or sponsorship Council accept must not compromise its reputation, image, probity or ability to fulfill its functions and responsibilities. Council retains the right to decline a donation or sponsorship agreement with any external party, in respect to particular products/services for which Council considers inappropriate, inopportune or if costs outweigh the benefits.

Council will not, under any circumstances enter into a donation or sponsorship agreement with external parties who:

- Conflict with Council's principles of equity, access, participation, rights and accessibility for all community groups.
- Pose a conflict with the broader policies and practices of Council or may be perceived in conflict.
- Undertakes any illegal or unethical activity that negatively impacts the community and/or natural environment.

Where Council receives offers of corporate donations or sponsorship to support Council's programs, such offers will be considered on a case-by-case basis. If approved, a Memorandum of Understanding for use of the funds will be developed and approved by Council.

6. COMMUNICATION

A list of Community Donations is contained in the Operating Budget adopted by Council each year. This policy will be available on the Horsham Rural City Council intranet and website.

7. RESPONSIBILITY

Policy Owner: Co-ordinator Community Relations and Advocacy

8. DEFINITIONS

Term	Meaning
Community donation	For the purposes of this policy, a community donation means HRCC giving a cash payment or other Council resources to assist the recurrent operations of community groups

9. SUPPORTING DOCUMENTS

Document	Location
HRCC Community Development Grants Policy (C04/024)	Internet/Intranet

10. DOCUMENT CONTROL

Version Number	Approval Date	Approval By	Amendment	Review Date
01	3 March 2014	Council	<ul style="list-style-type: none"> • New Policy 	
02	January 2017	Council	<ul style="list-style-type: none"> • Removal of refund of rate payments for service clubs as properties no longer rateable • Clarification of eligibility D – refund of rates for charitable <u>retail premises</u> i.e. Opportunity shops • Removal of listing of organisations this is now noted as included in Council budget 	
03	19 March 2018	Council	<ul style="list-style-type: none"> • Clarification of donations to watered and non-watered grass playing surfaces 	
04	14 December 2020	Council	<ul style="list-style-type: none"> • Minor grammatical changes • Addition of new name for Horsham District Kindergarten Association • Minor clarification to Section 5.1 C • Minor clarification to Section 5.1 D 	December 2021
05	24 January 2022	Council	<ul style="list-style-type: none"> • Change in Council Plan wording 	December 2022
	November 2022	Not required	<ul style="list-style-type: none"> • Reviewed by EMT – no changes required 	24 December 2023
5.1	March 2023	n/a	<ul style="list-style-type: none"> • New logo 	24 December 2023
06	January 2024		<ul style="list-style-type: none"> • Inclusion of provision for corporate donations 	



Summary of Committees & Councillor Representation 2024

Municipal Association of Victoria (MAV)

COUNCILLOR REPRESENTATIVES: Mayor Gulline with Cr Bowe as substitute

COMMITTEE SUMMARY

The Municipal Association of Victoria (MAV) is a membership association and the legislated peak body for Victoria's 79 local Councils.

The MAV's role is to:

- Represent and advocate local government interests
- Promote the role of local government
- Build the capacity of Councils
- Facilitate effective networks
- Provide policy and strategic advice
- Support Councillors
- Provide insurance and procurement services.

The MAV State Council is the governing body of the MAV and is made up of representatives of each member Council. State Council's powers include:

- Determining the rules of the MAV
- Electing the President and other members of the Board
- Determining the MAV's strategic direction
- Appointing the auditor.

The MAV State Council generally hold meetings in May and September each year.

North West Municipal Association*

COUNCILLOR REPRESENTATIVES: Mayor Gulline with Cr Bowe as substitute

COMMITTEE SUMMARY

The North West Municipalities Association (NWMA) comprises the municipalities of Buloke, Gannawarra, Hindmarsh, Horsham, Mildura, Northern Grampians, Swan Hill, West Wimmera and Yarriambiack.

Each of these Councils has a voting delegate who is the Mayor or nominated Councillor. The NWMA plays an advocacy and lobbying role for its member Councils and is represented on the Municipal Association of Victoria Board.

Meetings are held biannually in May and August.

*This association may change due to the MAV Regional Groupings Review

Victorian Local Governance Association (VLGA)

COUNCILLOR REPRESENTATIVE: Cr Haenel with Cr Flynn as substitute

COMMITTEE SUMMARY

The Victorian Local Governance Association (VLGA) is an independent organisation that supports Councils, Councillors and communities in good governance. The VLGA currently has currently 49 member Council.

Meetings are held as required.

Audit & Risk Committee

COUNCILLOR REPRESENTATIVES: Mayor Gulline and Cr Flynn with Cr Power and Cr Ross as first and second substitute respectively

COMMITTEE SUMMARY

The Audit and Risk Committee is an independent advisory committee to Council established under section 53 of the *Local Government Act 2020*. The Committee's objective is to provide appropriate independent advice and recommendations to Council on matters relevant to the Committee's Charter in order to facilitate decision-making by Council in relation to the discharge of Council's accountability requirements.

The Committee is an Advisory Committee and does not have executive powers or authority to implement actions in areas over which management has responsibility and does not have any delegated financial responsibility. The Committee does not have any management functions and is therefore independent of management.

The Committee will provide oversight and guidance on the following matters:

- Council financial performance reporting;
- Compliance of Council policies and procedures with the Act, particularly the governance principles;
- The effectiveness of the management and reporting of Council's risk management and fraud and corruption prevention;
- The effectiveness of Council's system of internal controls;
- The effectiveness of the internal and external audit functions; and
- The provision of an effective means of communication between the external auditor, internal audit, management and the Council.

Meetings are held quarterly generally in March, June, September and November/December each year.

Rail Freight Alliance

COUNCILLOR REPRESENTATIVES: Cr Redden with Cr Haenel as substitute

COMMITTEE SUMMARY

The Rail Freight Alliance is made up of Victoria rural, regional and metropolitan local government Councils. The alliance represents the local government sector in Victoria and adjoining states in freight logistics interests connecting Victoria nationally and internationally.

The purpose of the alliance is to advocate for:

- Rail standardisation of all key rail lines in Victoria
- Upgrading and connecting to a National Rail Freight Network
- A competitive, independent and open access rail freight system
- Seamless freight logistics that will facilitate efficient rail freight movement

Meetings are held bi-monthly.

Western Highway Action Committee

COUNCILLOR REPRESENTATIVE: Cr Ross with Cr Power as substitute

COMMITTEE SUMMARY

The aims of the Western Highway Action Committee are to:

- Pursue the upgrading of the Western Highway to achieve improvements to safety, transport, efficiency and amenity
- Lobby and obtain allocations of government funding for the implementation of approved strategies for the construction, planning and maintenance of the Western Highway
- Investigate the relationship between all transport systems linking Adelaide with Melbourne through the Western Highway Corridor, and collaborate with other groups and agencies in improving these links
- Liaise with and support Local Government with initiatives and actions relating to bypass issues of the cities and towns along the Western Highway
- Support and assist in the implementation of highway enhancement programs and strategies for economic, tourism and employment opportunities available along the Western Highway
- Encourage the implementation of programs for the appearance, presentation and serviceability of the highway facilities
- Support a sound consultative approach in managing the balance between improving highway safety and the environment
- Promote the design objective for upgrades to the Western Highway to be for freeway standards, including bypasses of towns and cities, to achieve a suitable consistent design speed that is safe and assists transport efficiency, supporting the dual outcomes of a "Towards Zero" approach to road casualties and the economic benefits of improved freight efficiency.

Membership of the committee is the 10 local governments along the Western Highway corridor from Melton to the SA border. Representatives of the Department of Transport / Regional Roads Victoria and Major Road Projects Victoria and Wimmera Development Association also participate in the meetings.

Meetings are held every two months at various venues along the Western Highway, occasionally including inspections of relevant work sites.

Wimmera Southern Mallee Transport Group

COUNCILLOR REPRESENTATIVE: Cr Bowe with Cr Redden as substitute

COMMITTEE SUMMARY

The purpose of the Wimmera Southern Mallee Transport Group (WSMRTG) is to collaborate and promote a regional transport position through the preparation and updating of Wimmera Southern Mallee Regional Transport Strategies. The WSMRTG is the priority setting body for transport related

issues in the Wimmera-Southern Mallee and makes recommendations for project funding to government. These transport strategies have underpinned many successful applications for grants to facilitate transport related projects.

Member Councils are Buloke, Hindmarsh, Horsham, Northern Grampians, West Wimmera and Yarriambiack.

Meetings are held bi-monthly, generally in Horsham.

Wimmera Southern Mallee Development (WSMD)

COUNCILLOR REPRESENTATIVE: Mayor Gulline

COMMITTEE SUMMARY

Wimmera Southern Mallee Development (WSMD formerly Wimmera Development Association) is the peak economic development organisation for the Wimmera Southern-Mallee region supporting existing local businesses and promoting economic development opportunities to investors. WSMD is a vital link between industry and government, lobbying for improved regional infrastructure, and advocating for regional priority issues.

WSMD is a collaboration between five regional Councils being, Hindmarsh Shire Council, Horsham Rural City Council, Northern Grampians Shire Council, West Wimmera Shire Council and Yarriambiack Shire Council.

Membership comprises of representative from local government, commerce and industry, education and training, environment and sustainability, health and wellbeing, manufacturing, recreation and tourism, sustainable agriculture, Wimmera Sustainability Alliance.

Meetings are held monthly.



AUDIT AND RISK COMMITTEE

BIANNUAL REPORT

For the Period 1 July 2023 to 31 December 2023

Contents

PURPOSE OF THIS REPORT	3
BACKGROUND	3
MEMBERSHIP	3
Attendance Report Table.....	3
KEY ACTIVITIES	4
ITEMS OF KEY INTEREST.....	4
INTERNAL AUDIT	4
EXTERNAL AUDIT.....	5
COMPLIANCE	5
REPORTING.....	5
GOVERNANCE	5
RISK MANAGEMENT, FRAUD MANAGEMENT & OTHER.....	5
POLICIES REPORTING.....	5
CEO BRIEFING	5
MINUTES OF THE AUDIT AND RISK COMMITTEE	6
CONCLUSION	6

PURPOSE OF THIS REPORT

The purpose of this report is to provide to Council a biannual report on the activities of Council's Audit and Risk Committee in accordance with the *Local Government Act 2020*.

BACKGROUND

Section 53(1) of the *Local Government Act 2020* (the Act) states that "a Council must establish an Audit and Risk Committee (ARC)". Section 54(1) of the Act states "a Council must prepare and approve an Audit and Risk Committee Charter." A Charter has been developed in response to the Act requirements and outlines the roles and responsibilities. An annual work plan is developed to ensure these responsibilities are met throughout the year.

Section 54(5) of the *Local Government Act 2020* (the Act) requires Council's Audit and Risk Committee to:

"Prepare a Biannual Audit and Risk Report that describes the activities of the Audit and Risk Committee and includes its findings and recommendations". Council's Audit and Risk Committee was established pre December 2004, and was reviewed on 24 August 2020 when Council resolved to adopt the Audit and Risk Committee Charter 2020 in accordance with the Act.

This report covers the Audit and Risk committee meetings held on 20 September 2023 and 07 December 2023 and meets the Committee's requirements under the Act to report to Council twice each year.

MEMBERSHIP

The Audit and Risk Committee comprises two appointed Councillors (one of whom is the Mayor) and three independent members with technical expertise and industry experience.

Members over the previous six months were:

- Richard Trigg –Chair (Sept meeting)/ Independent member (December meeting)
- Mark Knights – Independent member (Sept meeting)/ Chair (December meeting)
- Marilyn Kearney – Independent member
- Cr Robyn Gulline – Councillor representative/Mayor
- Cr Les Power – Councillor representative

Ex-Officio Members:

- Internal Auditor – RSD Audit
- External Auditor - Crowe Australasia (Victorian Auditor General's agent)
- Horsham Rural City Council:
 - CEO - Sunil Bhalla;
 - Director Corporate Services – Kim Hargreaves;

Attendance Report Table

Two meetings were held between 1 July 2023 and 31 December 2023 with member attendance as follows:

Name	20 September 2023 Meeting		07 December 2023 Meeting	
	In Attendance	Online / In Person	In Attendance	Online / In Person
Richard Trigg	Yes	In person (Chair)	Yes	In person
Mark Knights	Yes	In person	Yes	In person (Chair)
Marilyn Kearney	Yes	In Person	Yes	Online
Cr Robyn Gulline	Yes	In person	Yes	In person
Cr Les Power	Yes	In person	Yes	Online

KEY ACTIVITIES

The Annual Work Plan controls a timely completion of all tasks required under legislation and good governance for the reporting period.

Work undertaken by the Committee included consideration of a wide range of reports that indicated Council managements continued improvements and monitoring of developments.

In general the Committee has:

1. Followed a schedule of work activity that reflects requirements of Council as outlined in the Audit and Risk Charter
2. Continued close oversight of Council's risk management, controls, compliance and processes
3. Monitor Council's implementation of responses to audits
4. Address specific risk identified in the strategic risk register

The Council has continued to work well with the Committee and has demonstrated a high level of commitment to being open to audit findings and attend to any issues or improvement opportunities.

The Committee noted that improvements to Business Continuity and Risk Management are underway with progress made and the Committee looks forward to seeing improvements of a strong internal control environment and its management of Councils strategic and operational risks.

Council is supporting the development of a robust risk, control and compliance framework as evidenced by the work developed and implemented such as;

- Risk Management System
 - Procurement and pending implementation of Riskware (risk management software)
- Risk Management Policy and Risk Management Framework
 - Progress is inline with the expectations to redress the Risk Management audit recommendations.
 - The updates to the policy and framework aim to establish a consistent and structured approach to risk management.
- Annual Work Program (made up of 59 actions)
 - 55 actions were addressed
 - 3 actions were deemed not applicable to be completed in 2023
 - 1 action not completed but will be addressed through an alternate action

There are no identified risks the Committee has a specific or increased concern. In broad terms the Committee is of the view that Council is sufficiently addressing known risks. Council's management show appropriate focus on the management of risk, fraud and corruption and financial management.

ITEMS OF KEY INTEREST

INTERNAL AUDIT

Horsham Rural City Council, Community Engagement (final)

- This report represents the findings of the Community Engagement Internal Audit
- There are seven recommendations which management have accepted, four (4) with a medium risk rating, two (2) with a low risk rating and one (1) opportunity risk

Horsham Rural City Council, Project Scope Asset Management (draft)

- The purpose of this internal audit project is to provide independent assurance that Council's governance and internal control processes are operating effectively relative to asset management.

Horsham Rural City Council Councillor Expenses Review 2023(final)

- The overall objective was to assess and evaluate Horsham Rural City Council's processes for councillor expense reimbursements and allowances and ensure compliance with Council policy and the *Local Government Act 2020*.
- There are five (5) recommendations which management have accepted one (1) with a high risk rating, three (3) with a medium risk rating and one (1) low risk rating.

EXTERNAL AUDIT

- Annual Performance Statement
- Annual Financial Accounts
- Final Management Letter 2022-23

COMPLIANCE

- CEO expenses report

REPORTING

- Quarterly Report April to June 2023 and July to September 2023
- Annual Report 2022-2023
- Finance and Performance report (September 2023)

GOVERNANCE

- Annual Work Program actions completed
- Gifts, Benefits and Hospitality report 1 January 2023 to 30 June 2023
- Organisational governance checklist actions update.
- Committee review performance of Internal and External Auditors and the effectiveness of Secretariat support

RISK MANAGEMENT, FRAUD MANAGEMENT & OTHER

- Insurance Report 1 July 2022 to 31 August 2023 and 1 July 2022 to 30 November 2023
- Risk Management Committee update
- Strategic Risk Register report
- Risk Management Policy and Framework

POLICIES REPORTING

- Six policies and procedures adopted or reviewed, including Fraud and Corruption Control Policy and Framework, Business Continuity Management Policy, Road, Feature and Locality Naming Place and Rates and Charges Financial Hardship Policy and Rates and Charges Debt Collection Policy (20 Sept 2023)
- Four policies and procedures adopted or reviewed including 2024 Council Election Period Policy, Public Art Policy and Procedure and Fair Access Policy (07 Dec 2023)

CEO BRIEFING

- Parking review
- Waste collection review
- Flood restoration and recovery works
- Staff culture improvement plan
- Library service
- Operations improvement project
- HRCC Enterprise Agreement #10 2022-2025
- Electoral structure review
- Implementation of Monitor's recommendations
- Emergency management preparedness

MINUTES OF THE AUDIT AND RISK COMMITTEE

In accordance with Section 54(6) of the *Local Government Act 2020* the Chief Executive Officer must ensure the preparation and maintenance of agendas, minutes and reports of the Audit and Risk Committee. The Chief Executive Officer must also table reports and annual assessments of the Audit and Risk Committee at Council meetings when required and when requested by the Chairperson of the Audit and Risk Committee. Accordingly, all minutes of the Audit and Risk Committee are presented to the next available Council meeting.

CONCLUSION

This report provides the seventh biannual update on the activities and recommendations from Council's Audit and Risk Committee for the six-month period from 1 July 2023 to 30 December 2023. It is prepared in accordance with the requirements of Section 54(5) of the Act.

It is the view of the Audit and Risk Committee that it has discharged its responsibilities under the Audit and Risk Committee Charter, with the exemption of the rescheduled Review of the Annual Work Program.

The Committee will continue to review Council's governance, accountability, risk and internal controls to reduce the risk to the organisation and recommend improvements where identified.

This report has been reviewed and approved by all members of the Committee.

Mark Knights
Chair
Horsham Rural City Council Audit and Risk Committee

Spendmapp Monthly Report

Local Government Area: Horsham Rural City Council

Spendmapp cleans and analyses bank transaction data by time, geography, Expenditure Category and Type allowing continuous monitoring and analysis of local economic activity.

For the month of November 2023:

- Resident Local Spend was \$25.3M. This is a 1.14% increase from the same time last year.
- Visitor Local Spend was \$14.1M. This is a 10.98% increase from the same time last year.
- Total Local Spend was \$39.4M. This is a 4.46% increase from the same time last year.
- Resident Escape Spend was \$9.9M. This is a 9.69% increase from the same time last year.
- Resident Online Spend was \$13.3M. This is a 1.05% increase from the same time last year.

The 10.98 % increase in Visitor Local Spend suggests a relatively healthy growth in visitor economy activity.

Expenditure by Expenditure Type

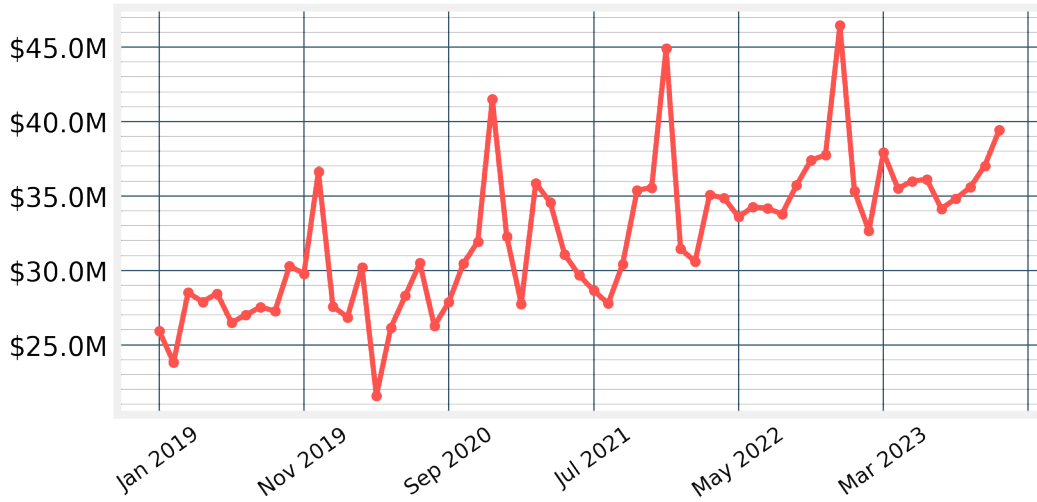
These expenditure charts show the long-term pattern of expenditure activity by Expenditure Type across the Horsham Rural City Council LGA. Typically, we see spending spikes at Easter and Christmas; dips in the post-Christmas period; and a steady climb through winter.

By way of a benchmark, the mean ratio of Resident Online Spend to all resident spending is 0.22. That is, for every dollar spent by resident cardholders anywhere, 22c goes online. Another 34c is in Escape Expenditure and the rest is spent locally.

Over the last few years across most of Australia, total expenditure has been relatively flat, even in fast growing municipalities. The exception to this has often been in Resident Online Spend, which continues to grow relative to Total Local Spend.

Total Local Spend

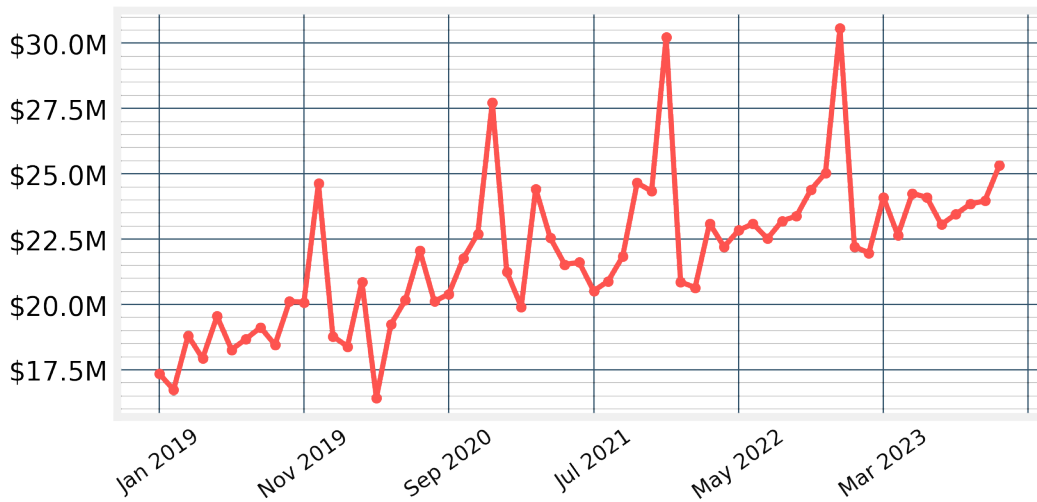
The total amount spent with merchants within the Horsham Rural City Council LGA.



Over the last 59 months, the spending trend (as shown by the trendline in the Spendmapp app) for Total Local Spend has been upwards.

Resident Local Spend

The amount spent by residents and local businesses with merchants inside the Horsham Rural City Council LGA.

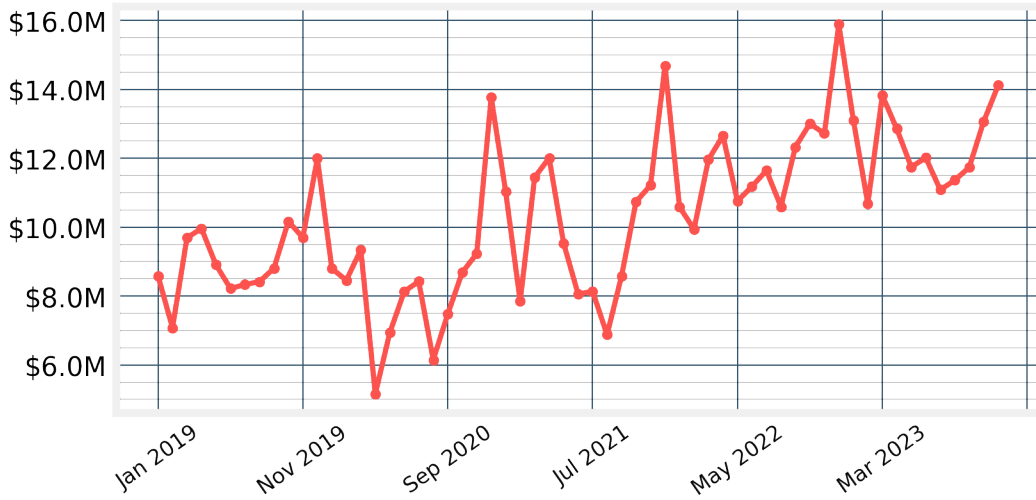


Over the last 59 months, the spending trend (as shown by the trendline in the Spendmapp app) for Resident Local Spend has been upwards.



Visitor Local Spend

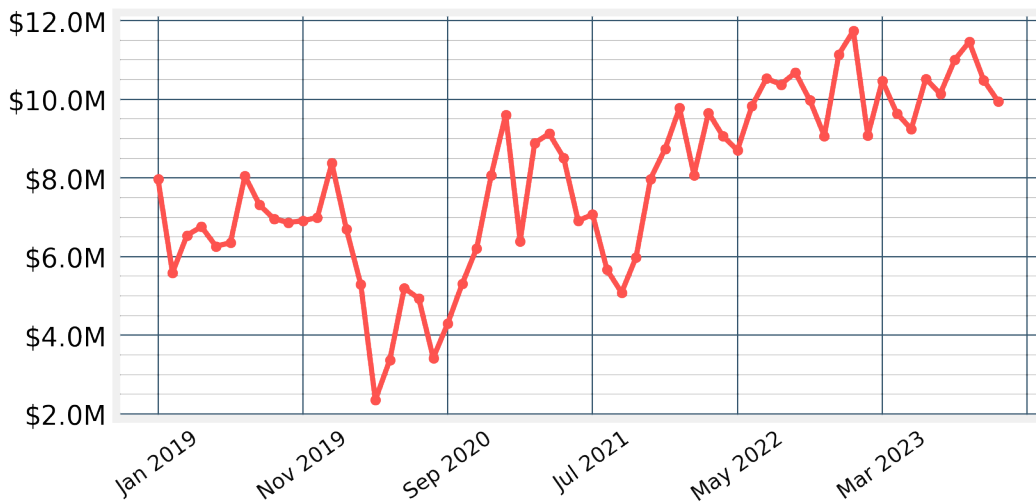
The amount spent by non-residents and non-local businesses with merchants inside the Horsham Rural City Council LGA.



Over the last 59 months, the spending trend (as shown by the trendline in the Spendmapp app) for Visitor Local Spend has been upwards.

Resident Escape Spend

The amount spent by residents and local businesses outside the Horsham Rural City Council LGA.

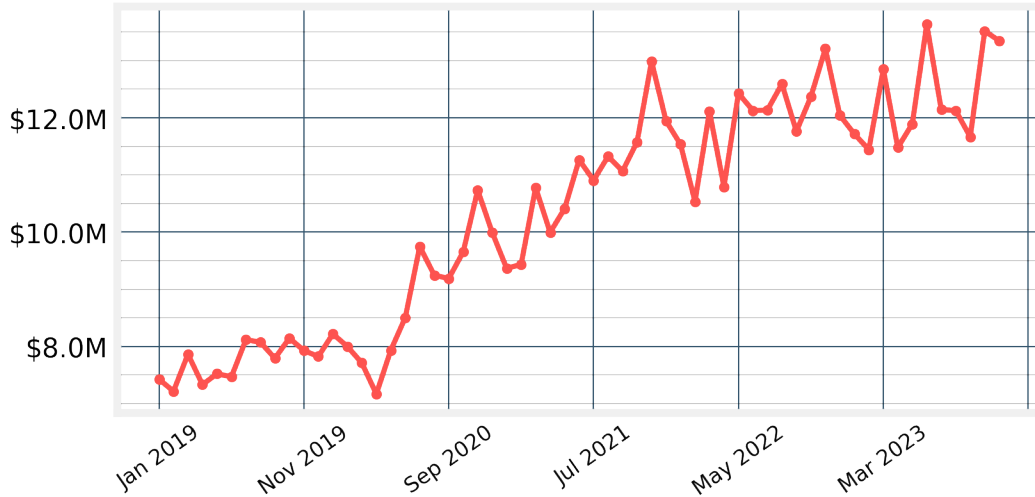


Over the last 59 months, the spending trend (as shown by the trendline in the Spendmapp app) for Resident Escape Spend has been upwards.



Resident Online Spend

The amount spent by Horsham Rural City Council LGA residents and local businesses with online merchants.

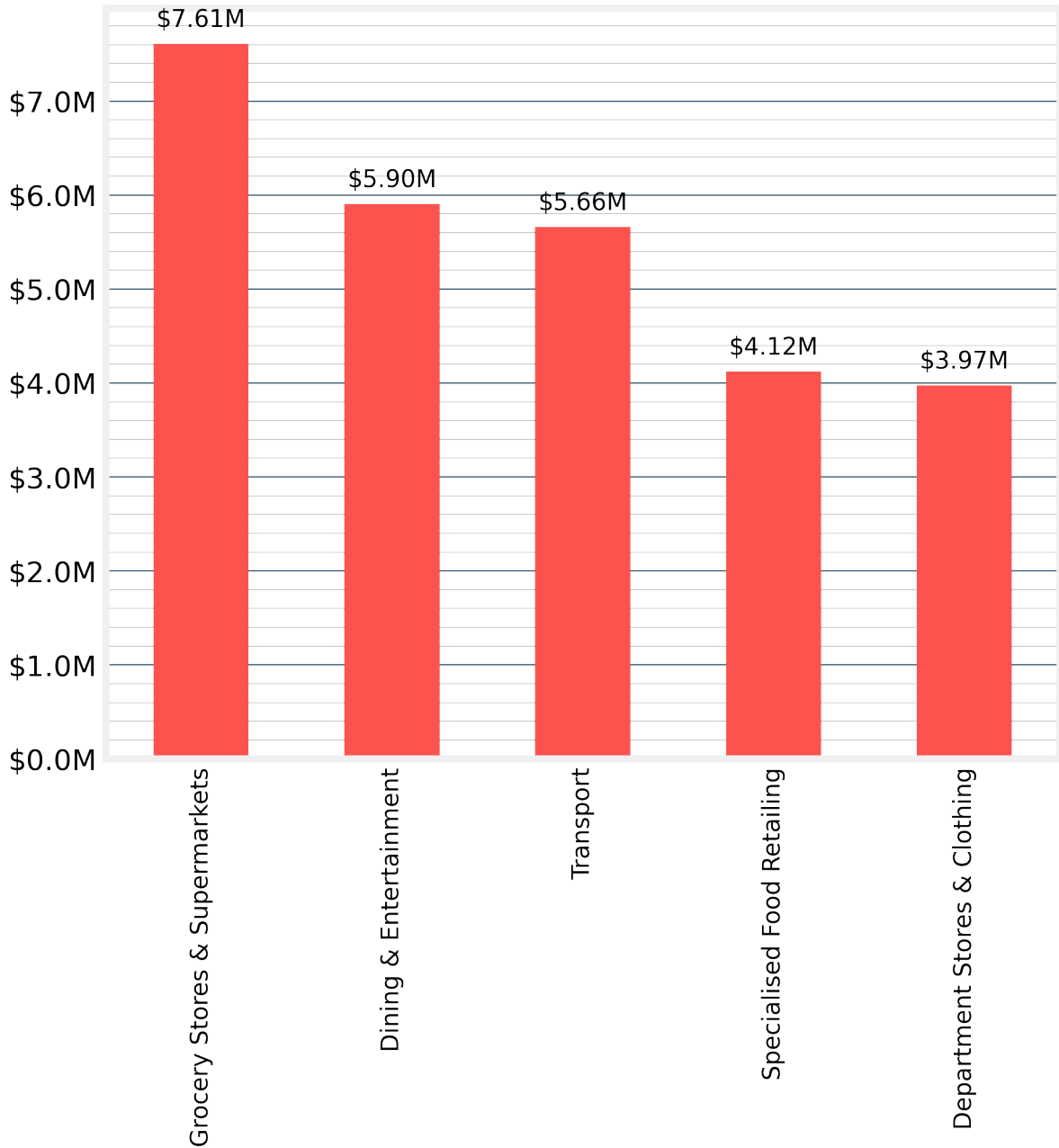


Over the last 59 months, the spending trend (as shown by the trendline in the Spendmapp app) for Resident Online Spend has been upwards.

Expenditure by Expenditure Category

The Top 5 Spending Categories for November 2023

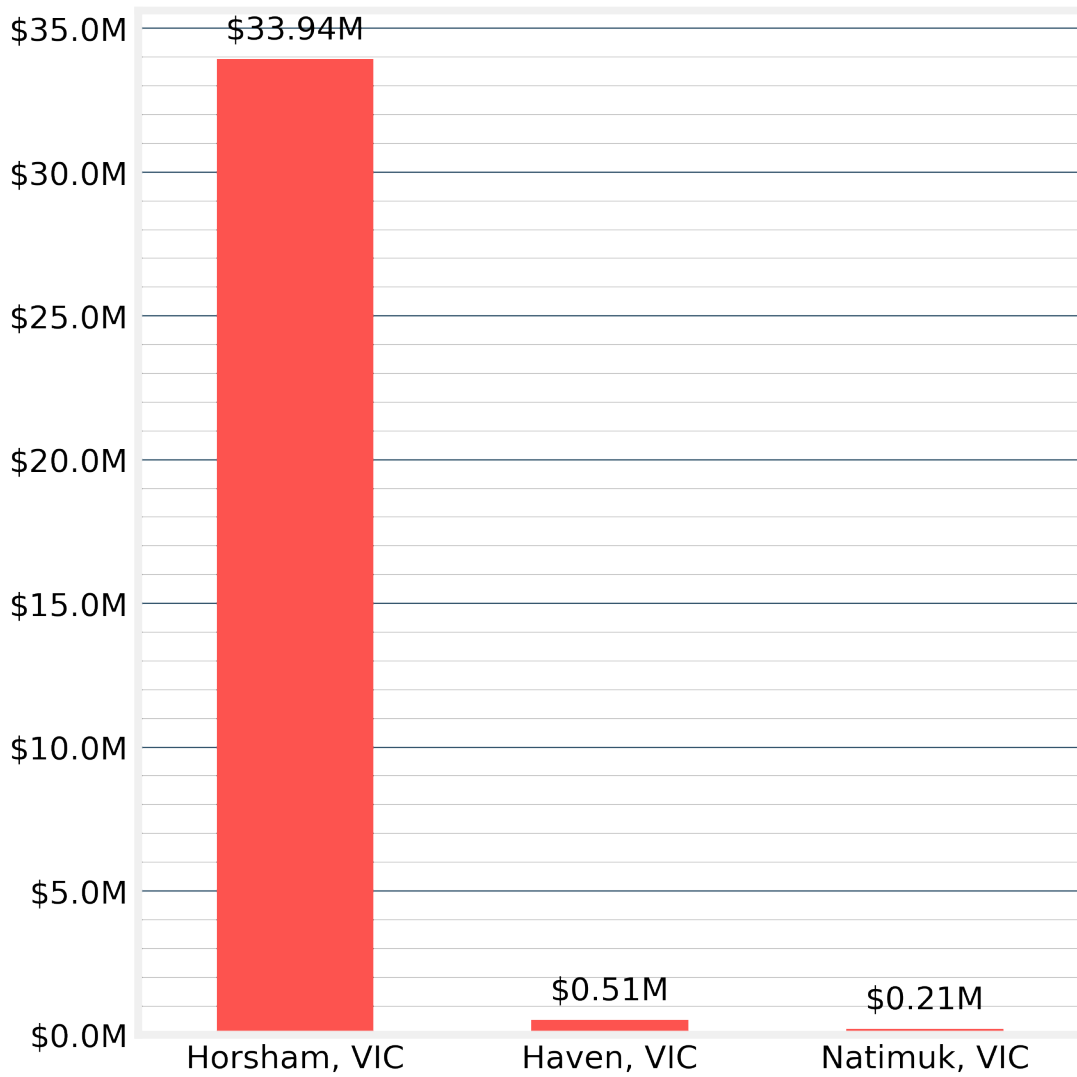
Total Local Spend split by the top 5 Expenditure Categories.



Spend by Origin and Destination

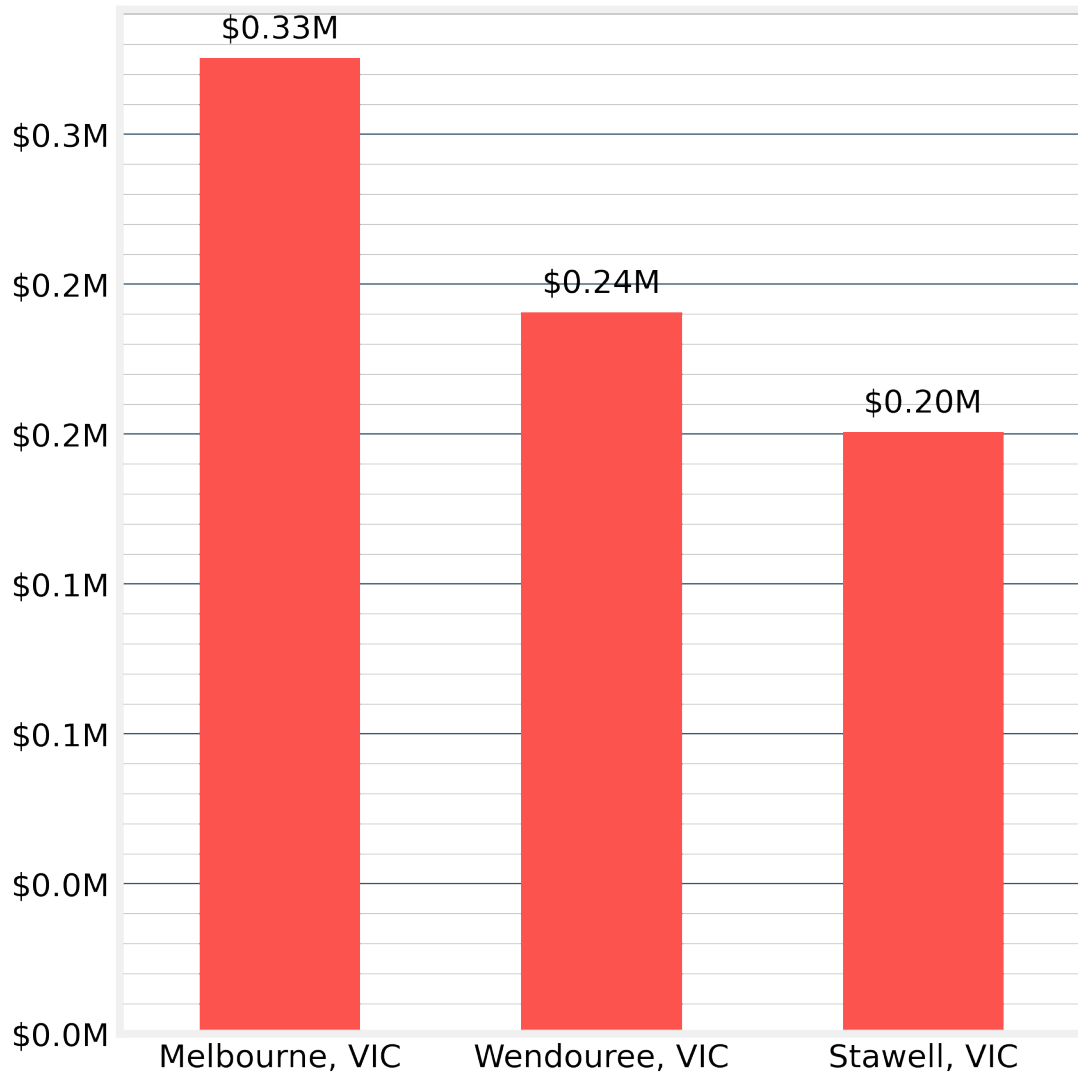
The Top 3 Suburbs by Total Local Spend for November 2023

Total Local Spend by Suburbs of destination (i.e. where the spending occurs)



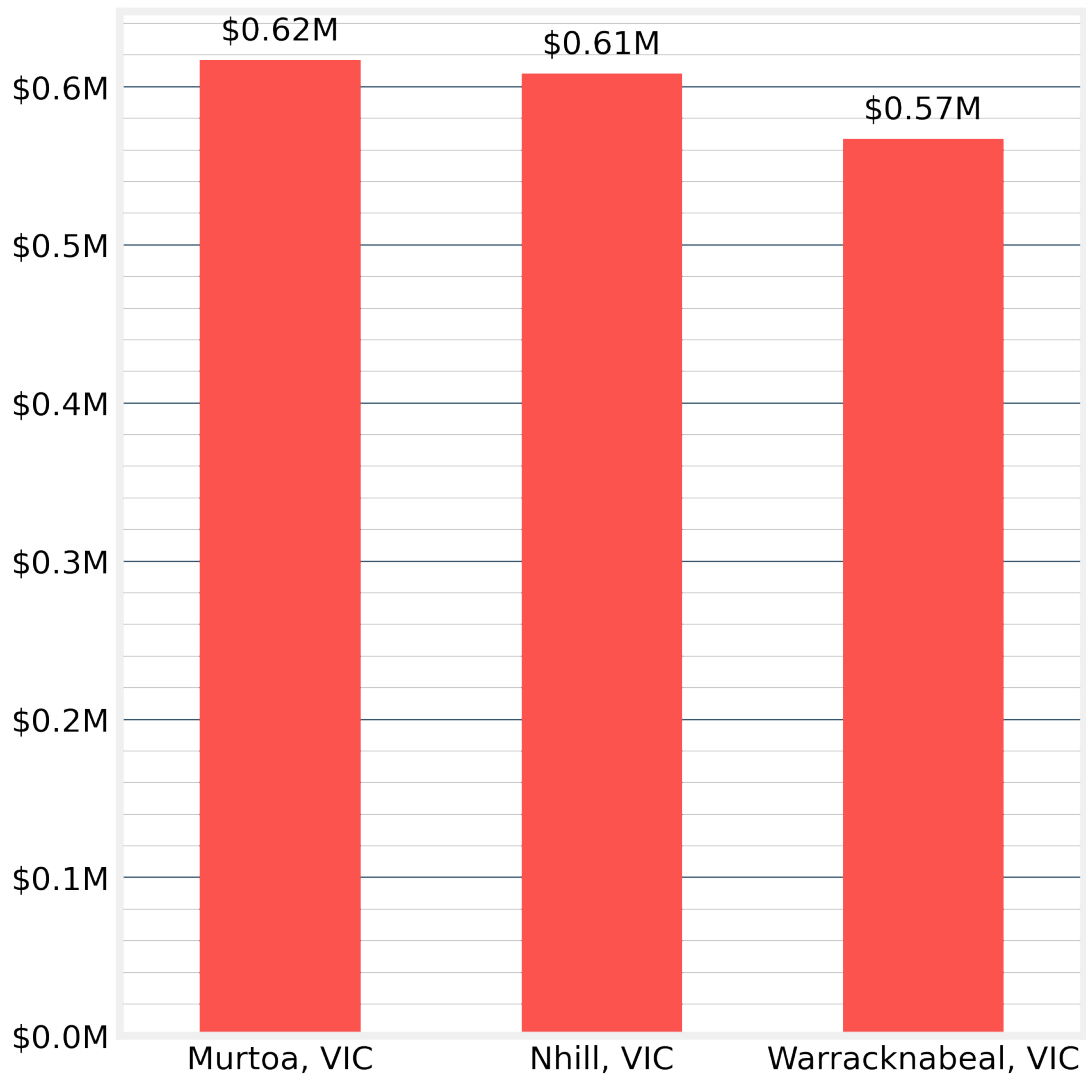
The Top 3 Suburbs by Resident Escape Spend for November 2023

Resident Escape Spend by destination Suburbs (i.e. where the spending goes to).



The Top 3 Suburbs by Visitor Local Spend for November 2023

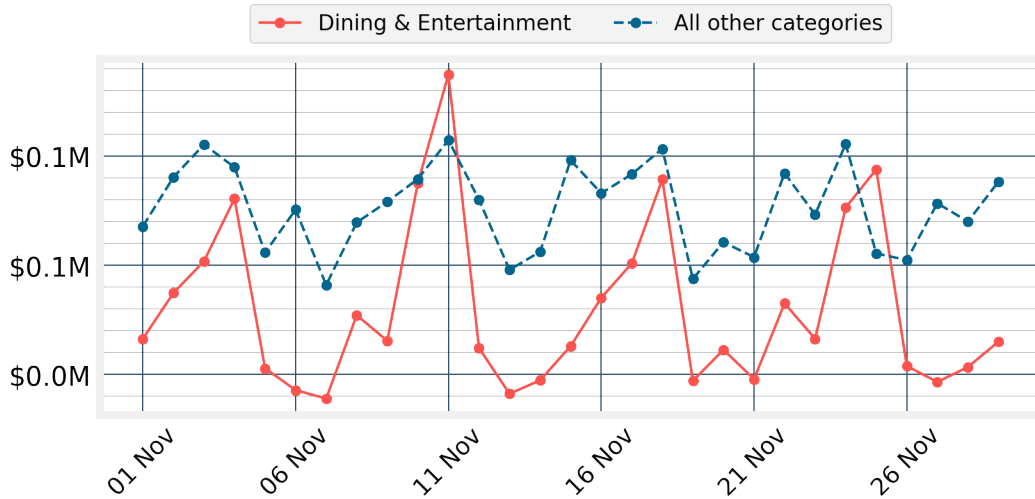
Visitor Local Spend by Suburbs of origin (i.e. where the visitors originate).



Night Time Economy

Night Time Economy for November 2023

The biggest spending night of the month of November 2023 was Saturday 11 November with Total Local Spend of \$0.3M. This was made up of \$0.2M in Dining and Entertainment spending and \$0.2M spending in all other categories.



Disclaimer

This document has been prepared by Geografia Pty Ltd for Horsham Rural City Council and is intended for its use only. Any use of material from the report should be appropriately cited (i.e. source:Spendmapp by Geografia). While every effort is made to provide accurate and complete information, Geografia does not warrant or represent that the information contained is free from errors or omissions and accepts no responsibility for any loss, damage, cost or expense (whether direct or indirect) incurred as a result of a person taking action in respect to any representation, statement, or advice referred to in this report.

**MINUTES OF INFORMAL MEETINGS OF COUNCILLORS
COUNCIL BRIEFING HELD IN THE COUNCIL CHAMBERS
MONDAY 22 JANUARY 2024 AT 5:00PM**

TO ATTEND: Cr R Gulline, Mayor; Cr D Bowe, Cr C Haenel, Cr L Power, Cr B Redden, Cr I Ross, Sunil Bhalla, Chief Executive Officer; Kim Hargreaves, Director Corporate Services; Carolynne Hamdorf, Acting Director Communities and Place; John Martin, Director Infrastructure

APOLOGIES: Cr P Flynn, Kevin O'Brien

ATTENDED BY: Cr R Gulline, Mayor; Cr D Bowe, Cr C Haenel, Cr L Power, Cr B Redden, Cr I Ross (joined at 5:28pm), Sunil Bhalla, Chief Executive Officer; Kim Hargreaves, Director Corporate Services; Carolynne Hamdorf, Acting Director Communities and Place; John Martin, Director Infrastructure

1. WELCOME AND INTRODUCTION

2. DISCLOSURE OF CONFLICT OF INTEREST SEC 130 and 131, LOCAL GOVERNMENT ACT 2020 AND HORSHAM RURAL CITY COUNCIL GOVERNANCE RULES

3. PRESENTATIONS

3.1 Youth Council Presentation **5:00pm to 5:30pm**

Attending: Alicia Drew, Noah Talbot and the Youth Council

3.2 Audit & Risk Committee Chair's Biannual Report **Appendix 3.2** **5:30pm – 6:00pm**

3.3 Audit & Risk Committee Annual Self Assessment **Appendix 3.3**

Attending: Mark Knights

3.4 Horsham Railway Corridor Landscape Plan (Carolynne) **Appendix 3.4** **6:00pm – 6:30pm**

Attending: Sue Sheridan

3.5 Budget Development Presentation (Kim) **6:30pm – 6:50pm**

4. COUNCIL MEETING REPORTS FOR DISCUSSION

4.1 Local Sport Infrastructure Fund (LSIF) (SRV) Co Contribution **6:50pm – 7:05pm**

Attending: Mandy Kirsopp **Appendix 4.1**

4.2 Councillor Representation on Committees (Kim) **Appendix 4.2** **7:05pm – 7:15pm**

4.3 Donations Policy (Incorporating Corporate Sponsorship) (Kim) **7:15pm – 7:20pm**

Appendix 4.3

5. OTHER REPORTS

5.1 Investment Attraction & Growth Report (Carolynne) **Appendix 5.1** **7:20pm – 7:30pm**

5.2 VCT/Planning/Building Update (Carolynne) **Appendix 5.2** **7:30pm – 7:35pm**

6. GENERAL DISCUSSION (Sunil Bhalla)

- Visitor Economy Partnership - Grampians Wimmera Mallee Tourism trial
- Golf Course Road hotel development
- Councillor tour

7. CLOSE

The meeting closed at 8:40pm

SUNIL BHALLA
Chief Executive Officer