

# Wimmera Riverfront Concept Plan

Stage 1 of the Horsham City to River Masterplan

## Introduction

This project is the first stage of the City to River Masterplan, a long term plan which aims to enhance and revitalise the Wimmera River Precinct and Central Activity District of Horsham.

The City to River project has been divided into sub-precincts to allow projects to proceed in a staged, prioritised manner. The Wimmera River is one of Horsham's significant natural assets and a key regional strength, providing the basis of establishing the town settlement in the 1830's. This project builds on this, creating new active spaces with linkages to the central activity district and existing open space and recreational facilities.

In relation to the Riverfront Activation Precinct, Council endorsed the implementation of detailed concept and schematic designs for the Riverfront in November 2019. The development of the Riverfront precinct aims to address the following statement;

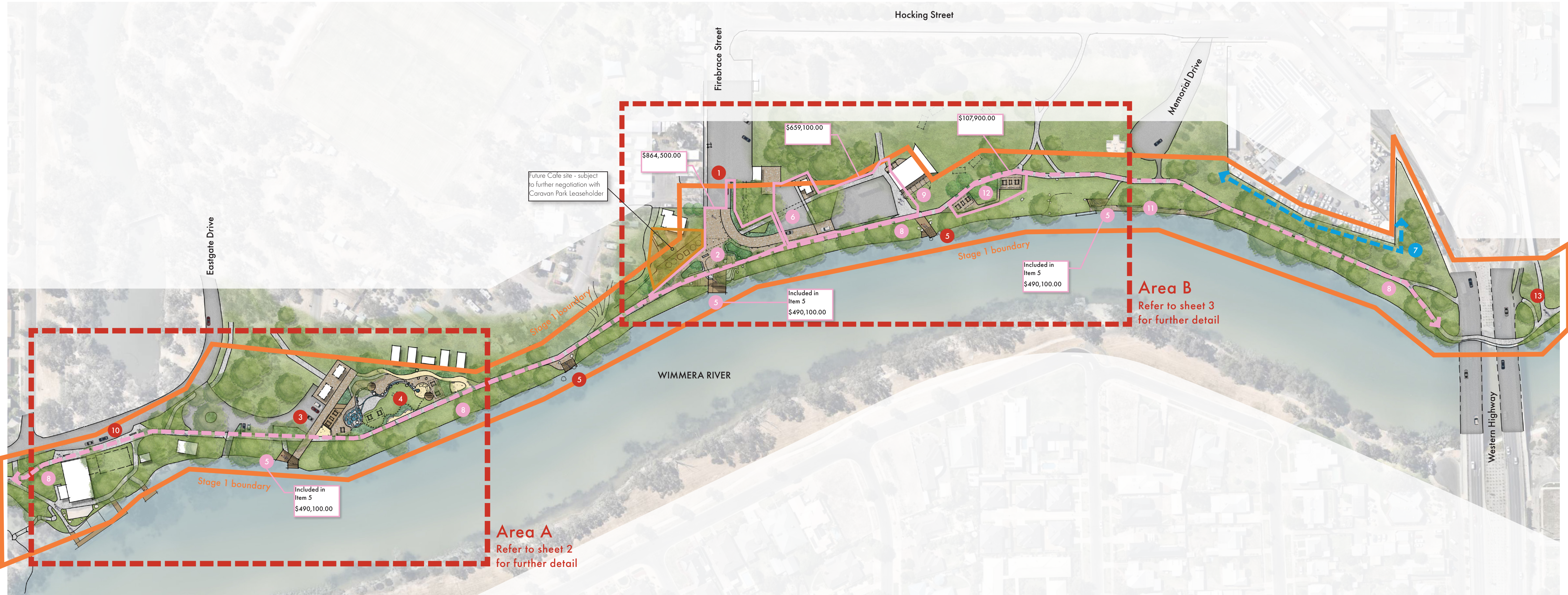
“ How do we make the Wimmera Riverfront an even more inviting place for everyone now and for generations to come ?”

## Wimmera Wetlands

Horsham lies in the centre of the internationally significant Wimmera Wetlands region and there is an invaluable opportunity to let more people know about this unique aspect of our landscape. Signage and information within the design can provide a better understanding of the hydrology of the Wimmera River system, drought and flood cycles and the connection between water play and an improved knowledge of water management and preservation in our drying climate.

## Cultural Heritage

The productivity of the Wimmera region formed the basis for settlement in the area, not just for wheat farmers, wood cutters and sheep farmers from the early 1800s but First Nations people possess an extensive history of living on this land and connection and relationship with the fertile wetlands and western plains. This cultural heritage and history of the region will be interlinked with the development of the Riverfront and emphasised through integrated design, interpretation and artwork elements.



## Precedent Imagery



11 Above: Potential seating treatment to existing timber retaining walls.

Images show some similar treatments as those proposed.



7 Above: Potential material treatment along fence line in collaboration with adjacent owners.

## Legend (Note: Stage 1 Scope Items shown in pink)

Item	Cost	Item	Cost
1 Tie-in works to southern end of Firebrace Street to new Meeting Place	Excl	9 Angling Club building upgrades	Included in Item 6
2 Civic gathering space, Meeting Place, proposed Cafe site / services	\$864,500	10 Rowing Club upgrades, vehicle loading off Eastgate Drive	Excl
3 Eastgate Drive carpark, Water Sensitive Urban Design (WSUD)	Excl	11 New integrated seating to retaining wall	Included in Item 5
4 Natural Water Play park, shelters, historical and cultural interpretation	Excl	12 Replacement of picnic/BBQ facilities with new shelters	\$107,900
5 River Edge Connections, incorporating integrated art/play and seating	\$490,100	13 Upgrade of path connection to bridge footpath	Excl
6 Upgraded Public toilet facilities, carpark/access road upgrades	\$659,100	14 Artworks and cultural / heritage interpretation	\$100,000
7 Town Entry Feature(to be confirmed)	Excl	15 Planting Works (Precinct wide – nominated locations)	\$170,000
8 Walking/cycling path enhanced to extent of Stage 1	\$227,500	16 Signage and Lighting upgrades	\$140,400

## Project Timeline

### 2018-2019

City to River Masterplan developed by HRCC, Urban Enterprise and Tract  
Public Comment sought and received on Masterplan

### Late 2019

Funding secured for Stage 1

### March 2020

Engagement Plan is developed to support Stage 1 Concept Development  
Community Reference Group (CRG) for Stage 1 convened

### April-July 2020

Stage 1 - Draft Concept Plans are progressed considering Community feedback from Masterplan and input from the CRG

Funding grant update is lodged with Federal Government

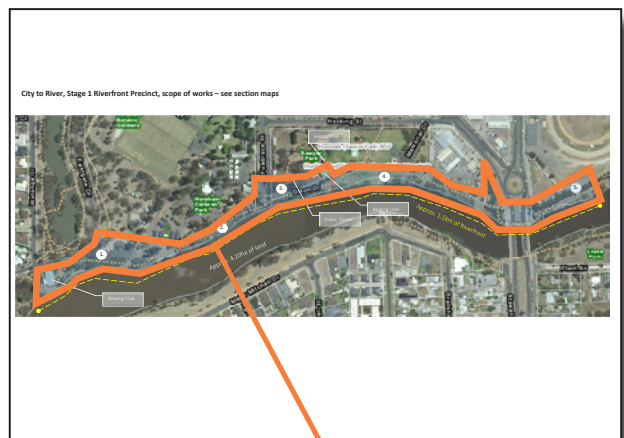
### July-August 2020

Stage 1 - Draft Concept Plans completed and displayed for Community input in early August

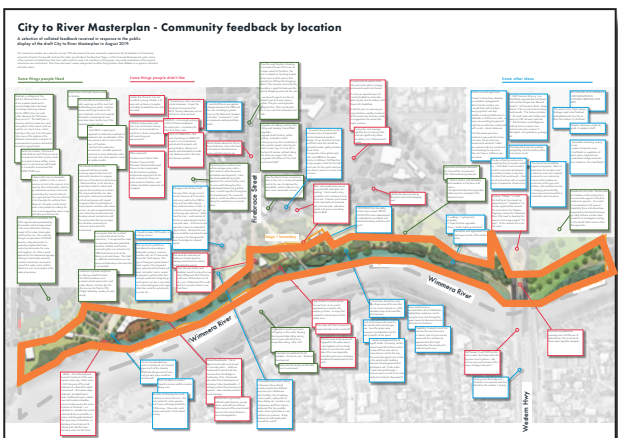


City to River Masterplan boundary

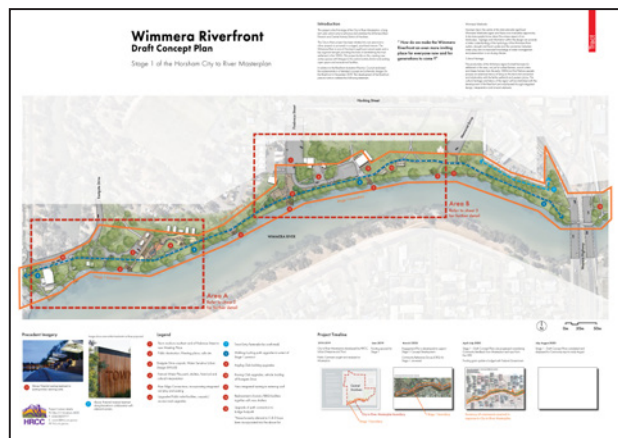
Stage 1 boundary



Stage 1 boundary



Summary of comments received in response to City to River Masterplan



Project Contact details:  
PO Box 511 Horsham 3400  
P: (03)53829777  
E: council@hrcc.vic.gov.au  
W: hrcc.vic.gov.au



# Wimmera Riverfront Concept Plan

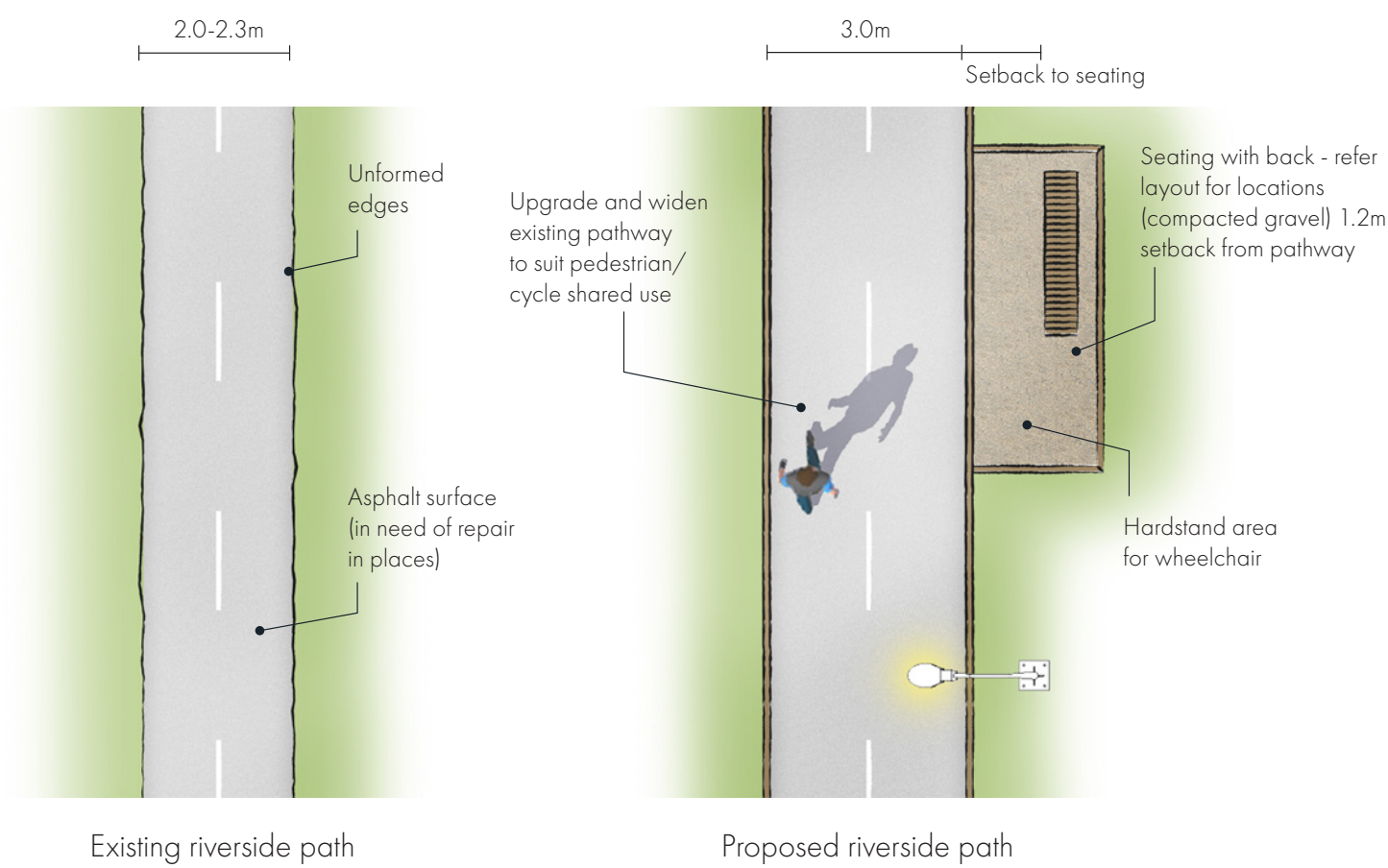
Stage 1 of the Horsham City to River Masterplan

## Area A

### Precinct-wide Landscape upgrades

A number of elements will be applied to Stage 1 works to ensure a comprehensive and coordinated upgrade of basic elements. These elements include:

- Integrated Public Art elements in the landscape;
- Interpretive, storytelling and wayfinding signage;
- Pedestrian level lighting and feature lighting to select areas to supplement existing lighting;
- Furniture including seating, picnic settings, bike hoops and other supporting furniture elements - bench seats at nominal 50m intervals and at River Edge connections as a minimum
- River bank remediation where deemed necessary - extent to be determined in conjunction with WCMA/ DELWP
- Walk/cycle path upgrades - increased width and upgrade where required. This is proposed to the full length



### Natural Water Play

The Natural Water Play facility is a key part of the landscape for this precinct, providing a new significant community-based recreational facility and attraction. The location has been determined as part of the overall development of the Riverfront precinct and relates closely to adjacent existing elements and facilities – Rowing Club, carpark and slipway, Botanical Gardens and Caravan Park, as well as relationship to the shared pathway system along the Riverfront. The nearby Adventure Island includes additional play and active recreational facilities and a pedestrian and cycle connection across the Anzac Bridge to the South Bank.

The Natural Water Play layout includes areas designed for different age groups, with some physical separation and age-appropriate elements for more interactive group or active play. Dry and wet sand play areas are provided as part of the design and offer a range of all-season play opportunities. Shaded seating areas for parents and carers, as well as seating walls and logs / boulders to partially enclose the play space are provided and located to define and enclose the play space from adjacent circulation pathways and vehicular areas / carpark. These walls and barriers provide some physical containment for smaller children to separate them from the river edge.



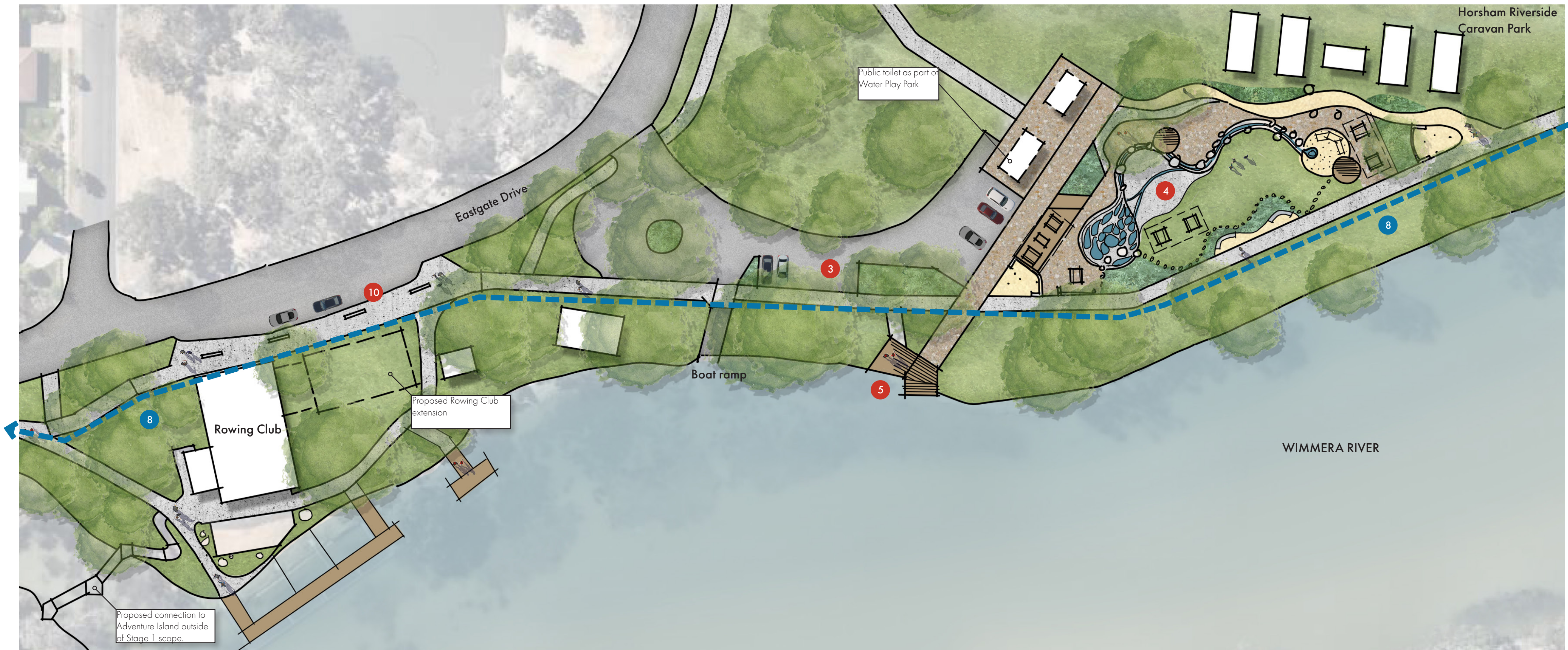
The natural Water Play 'Creek' is interwoven through an undulating, mounded landscape of open lawn, massed groups of groundcovers and shrubs, under a canopy of existing and additional native shade trees, with grassed areas and pathways providing access and circulation options and additional play opportunities. A defined sand play area for younger children will provide additional options for play and use during colder months when the play elements may be less frequently used.

Layout and location of the Play area has been designed to allow clear vision and oversight by parents and carers, with separation from more active circulation routes and the river's edge. Designation and suitability of features for different age groups has been provided to allow multiple activities.



### Legend

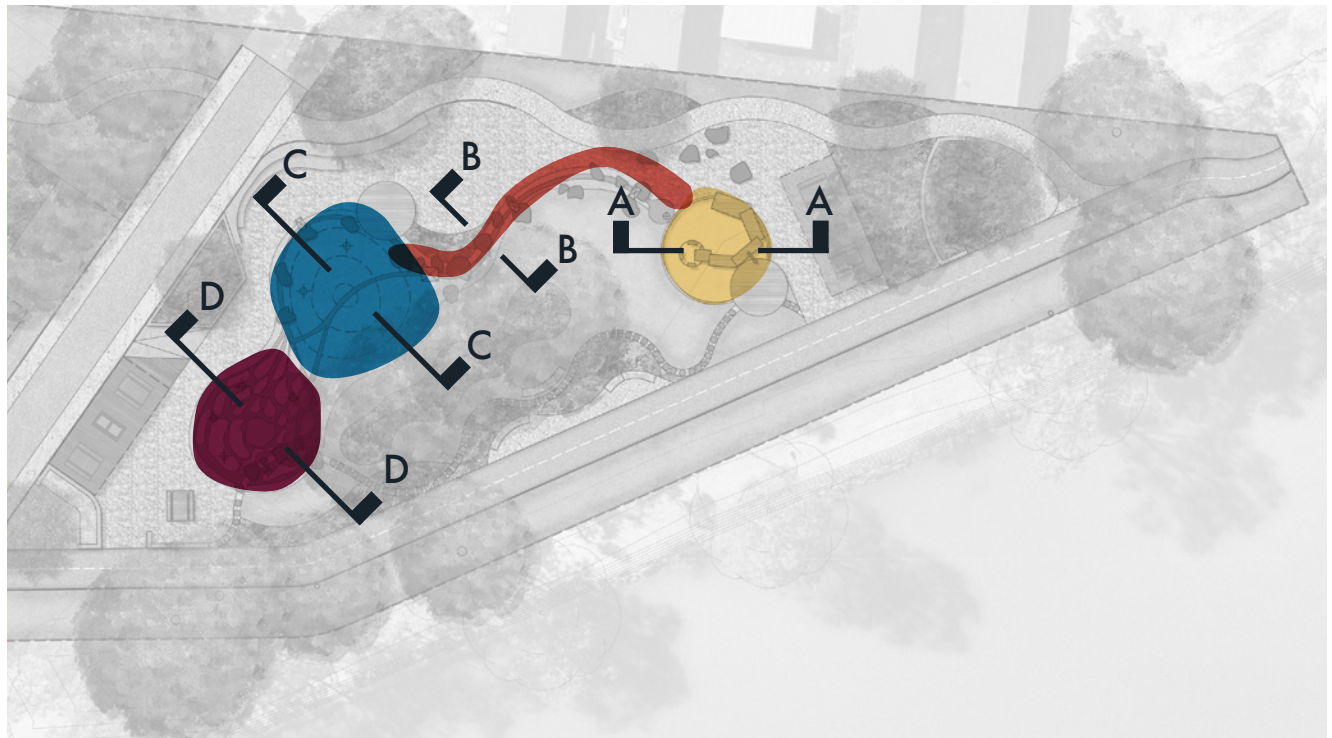
- 3 Eastgate Drive carpark, Water Sensitive Urban Design (WSUD)
- 4 Natural Water Play park, shelters, historical and cultural interpretation
- 5 River Edge Connections, incorporating integrated art/play and seating
- 8 Walking/cycling path upgrades to extent of Stage 1 precinct
- 10 Rowing Club upgrades, vehicle loading off Eastgate Drive



## Area A

### Waterplay Zone

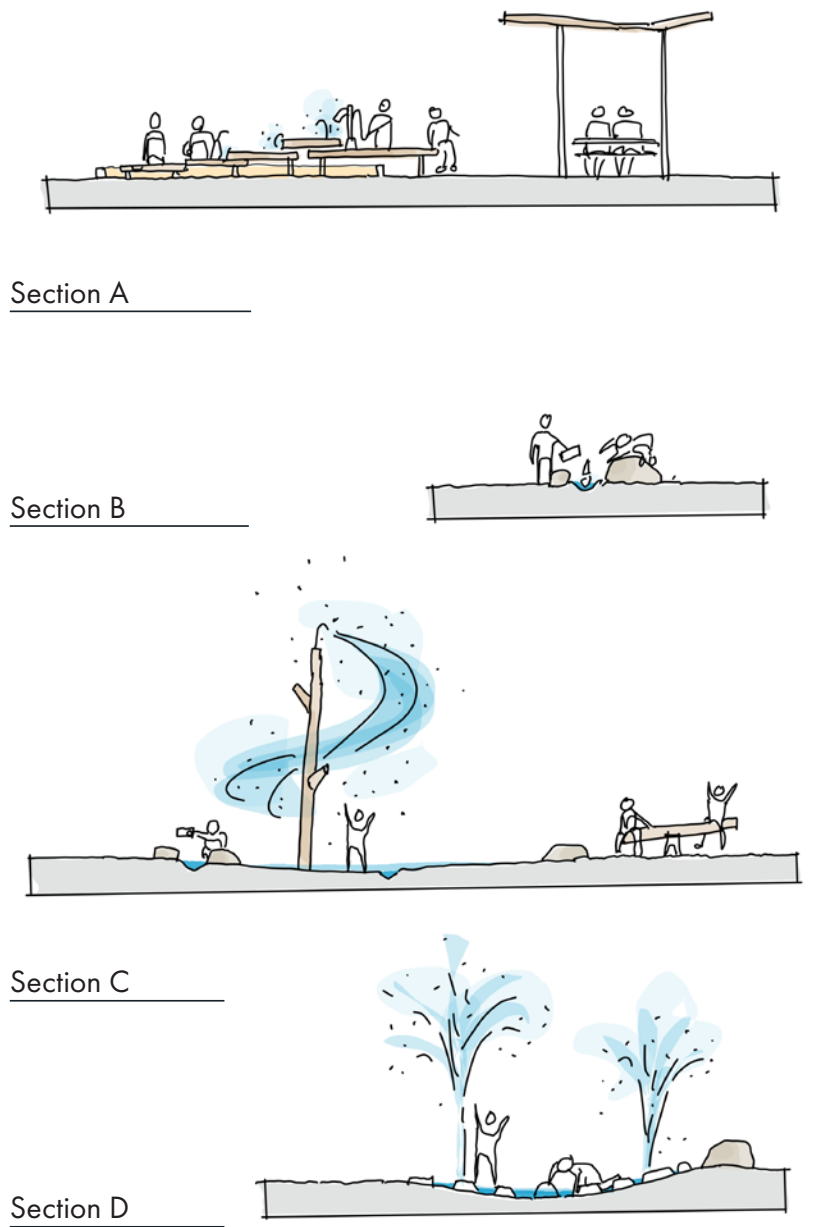
- Interactive natural Water Play Park destination with ephemeral pools, pop-jets and imaginative play opportunities
- Indigenous story embedded into landscape and reference to heritage and settlement of Wimmera River country
- Reference to Wimmera Wetlands - internationally recognized Ramsar sites and deep indigenous significance to cultural heritage and local settlement history



### Conceptual zoning

The main play areas have been structured to reflect the features of the River floodplain they sit within. Four zones including: River beach, Creek, Flood plain and Tributary mimic the character of these landscape features within the waterplay park.

- River Beach zone**
  - All ages play area (1+)
  - 'Wet 'mud' play with sand
  - All seasons play
  - All abilities access from hardstand
- Creek zone**
  - All ages play area
  - Easy mushroom pump (3+)
  - All seasons play opportunities
- Flood Plain zone**
  - Intermediate age play
  - Physical activation pumps
  - Water direction options with switch gate
- Tributary zone**
  - All ages play
  - Shallow water fill option with ball valve





# Wimmera Riverfront Concept Plan

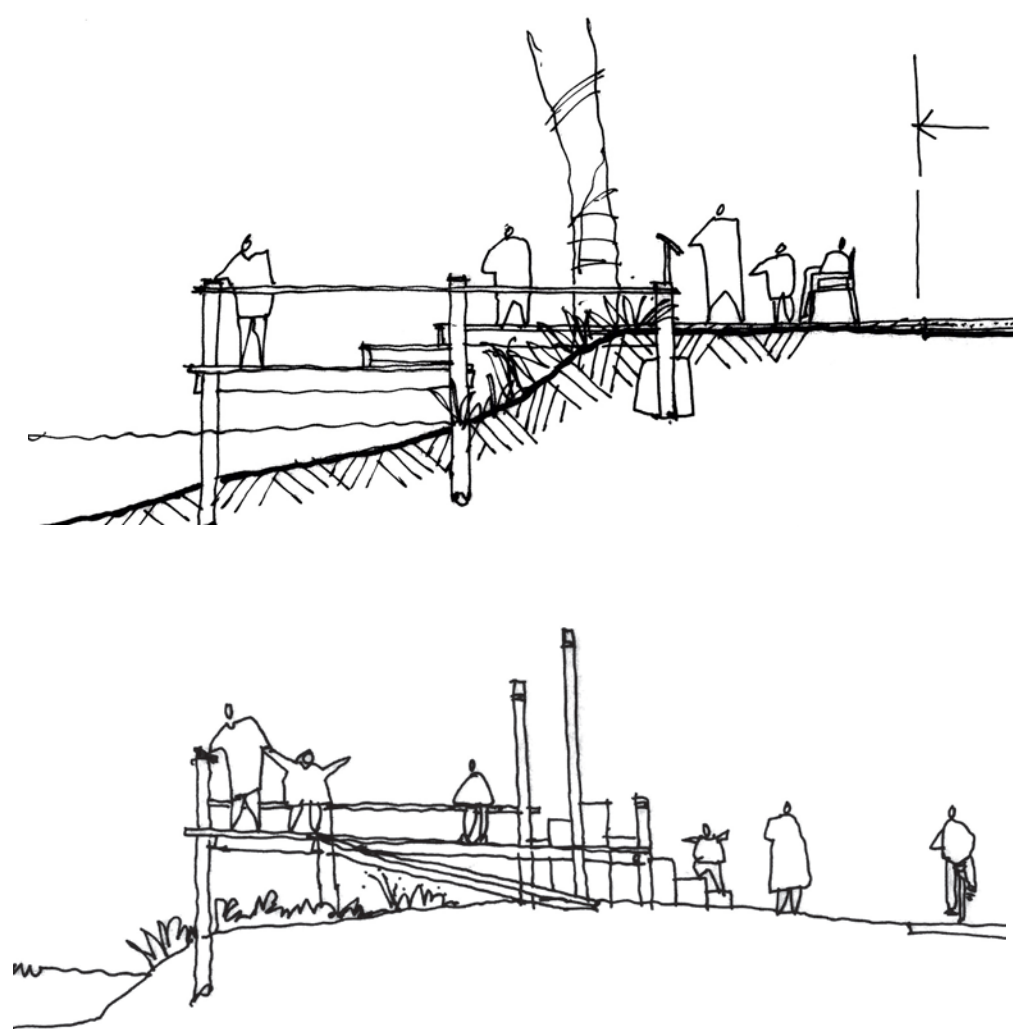
Stage 1 of the Horsham City to River Masterplan

## Area B

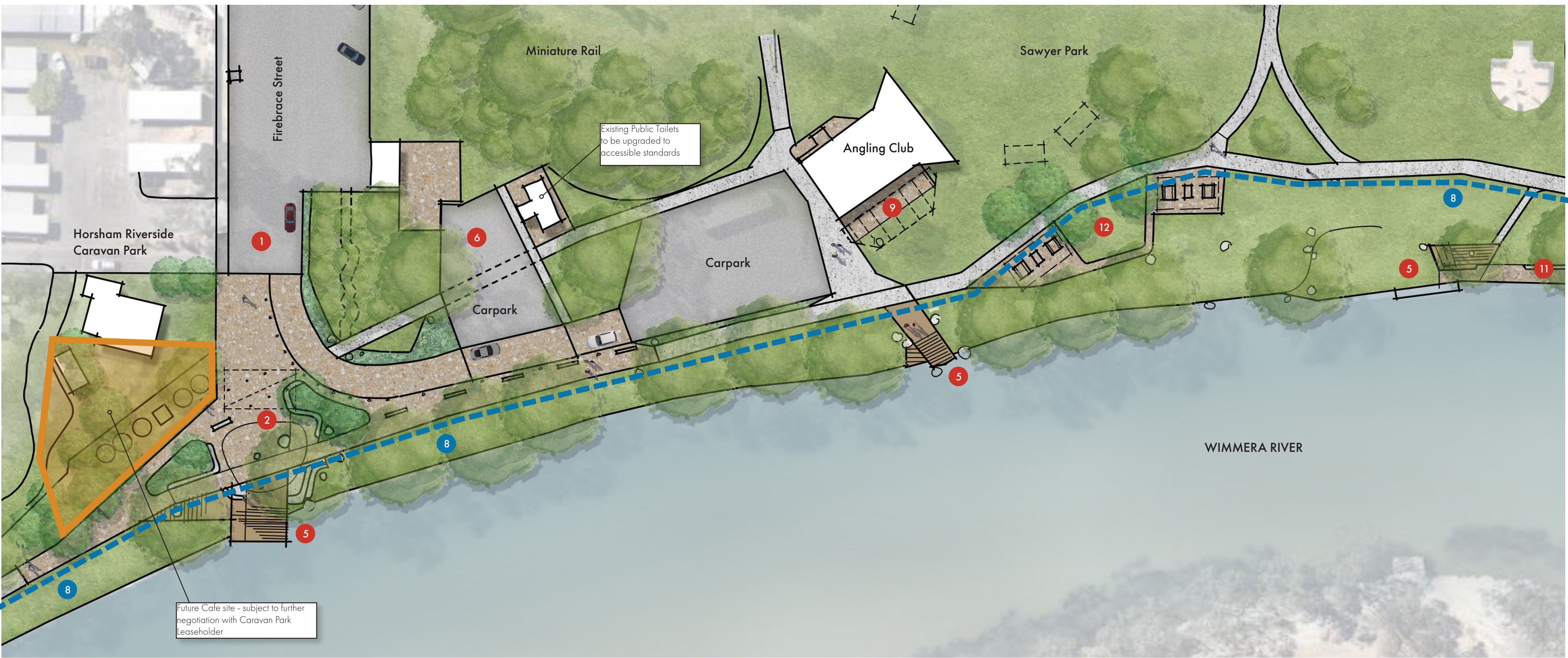
### River Edge Connections

Responding to the site specific conditions of each area they are installed in, this series of structures presents an opportunity to provide a unique perspective of the Wimmera River. With some raised above either ground or water, others will cascade down to the water's edge offering visitors access at the water level. The River Edge Connections also serve as a canvas for storytelling and could incorporate art and information about the River and its social, cultural, ecological and historical importance to the region. These interventions will act as a series of interconnected landmarks that will subtly support and enhance the activities along the River's edge.

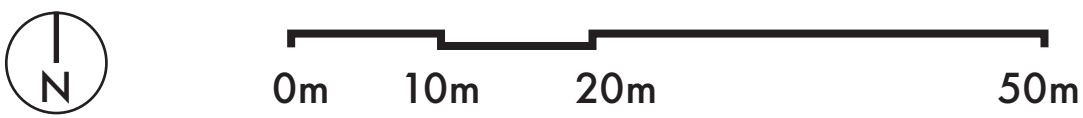
The River Edge Connections aim to offer a variety of experiences along the Wimmera River that support active enjoyment by a diverse range of users



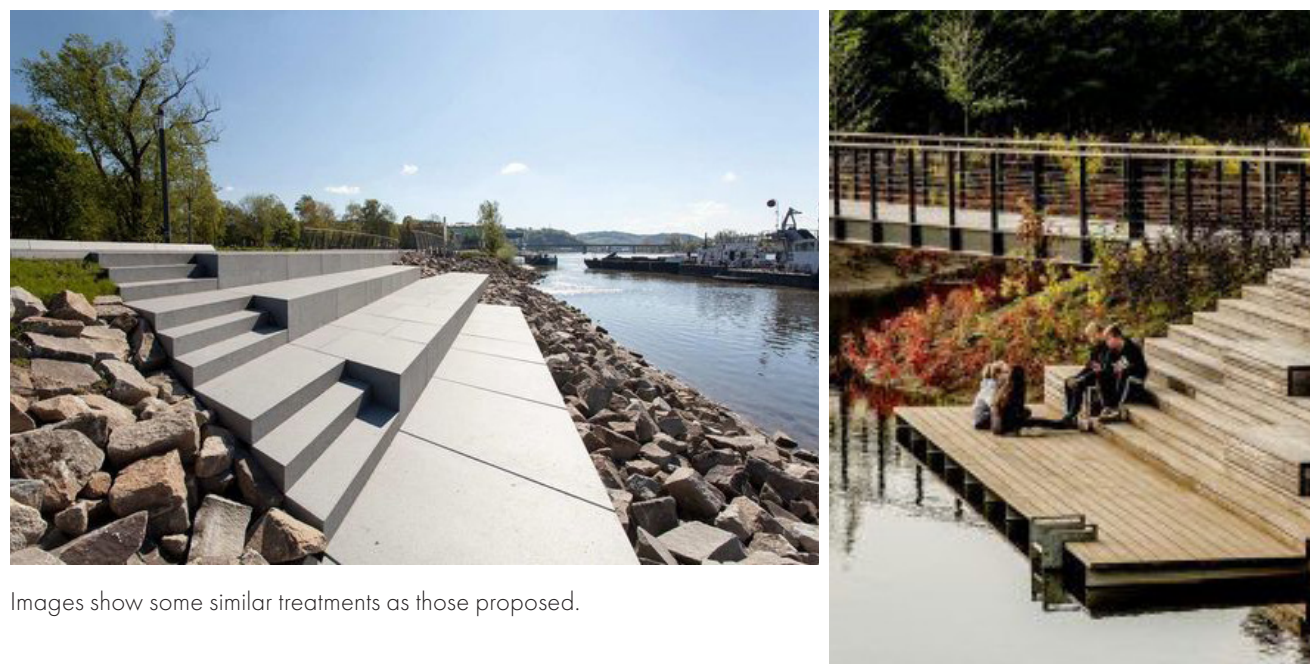
Sections through River Edge Connections



## Area B



### Precedent Imagery



Images show some similar treatments as those proposed.

### Views of River Edge Connections

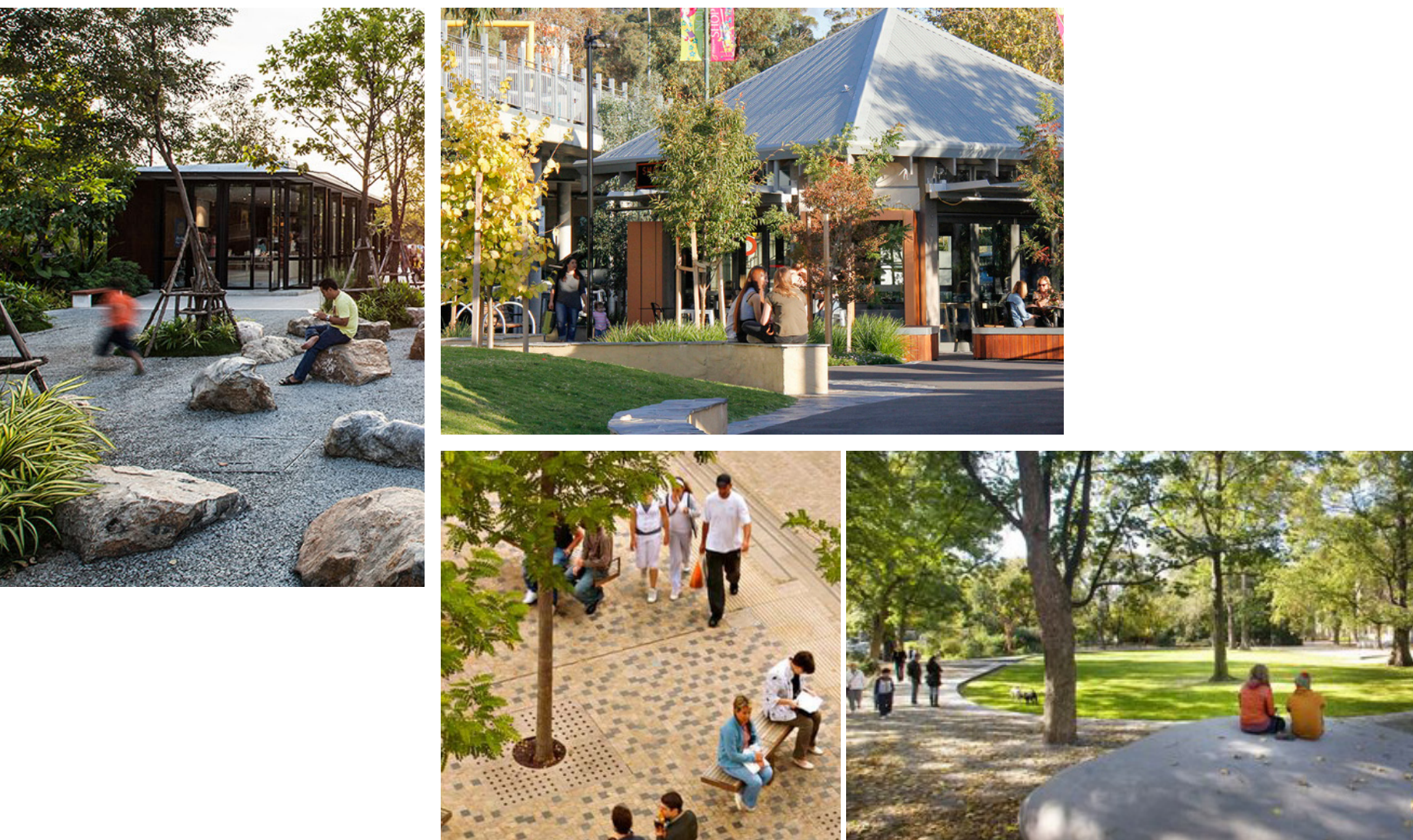


### Meeting Place

A community meeting place is proposed at the river end of Firebrace Street, providing a public gathering and destination space with sheltered seating areas, performance space, a River Edge Connection and a starting point to explore the Riverfront.

A café is proposed in this location at a future date and a platform with services will be provided for this development. In the interim this site will provide connections for water and power and space for pop-up operations in the short term.

Information signage and educational material about the site, including indigenous cultural heritage and post-settlement history will be integrated into the landscape development.



Images show some similar treatments as those proposed.