

nbn Art Box Project

16 art box locations

17 artists

4 art groups: Dimboola Primary School, Horsham College, Goolum
Goolum – Kookas and Celebrating Sistas



Artist Amabile Dalfarra-Smith

Art Work

Artist Statement

1. Amabile Dalfarra-Smith. "A Splash of Pink", oil on canvas, 120x90cm. SOLD
 2. Amabile Dalfarra-Smith. "Blooming above Me", oil on canvas, 90x100cm. SOLD
- "Our gum trees are stunning when they are in bloom. Their flowers vary in colour from tree to tree.
I wanted to capture this in my work."



Location: 13 MCLACHLAN STREET

[Map Link](#) [CLICK HERE](#)



Artist

Amy Schmidt

Art Work

Wimmera River and Weir

Artist Statement

These photographs were taken near the Wimmera River and Weir for a school assignment during online learning in 2020. The river is a great site to photograph as it has beautiful scenery.



Location: 21 Urquhart St

Map Link: [CLICK HERE](#)

Artist Christine Umbers
Art Work Botanicals
Artist Statement

Lino Cut – Relief Print (Process)

After the design is finalised, it is transferred by hand onto the lino and then the lino is cut into squares. Each piece is individually cut out by hand with lino cutting tools. The design is reassembled and inked with black printmaking ink using a rubber roller. The paper is carefully laid on top of the linocut and hand rubbed on the back of the paper with barons to transfer the design from the inked plates onto the paper. Once the ink has been transferred (the design will be in reverse), carefully peel the paper off the linocut. After the print was fully dried, I hand coloured it with artists pigmented ink. Created through the Horsham Regional Art Gallery Print and Design workshop led by Amabile Dalfarra-Smith.



Location: 71 Firebrace St
Map Link: [CLICK HERE](#)

Artist Dimboola Primary School

Art Work Undiscovered

Artist Statement From our imagination we conjured fantastic creatures to share the space, in this group collage. Scientists say only 20% of the worlds living things have been discovered so far. Maybe these creatures are some of them. Stone paper was used as a painting surface, to encourage inks to slide around and mix together, creating textures and effects. Grade 5 and 6 Dimboola Primary School



Location: 202 Baillie St
Map Link: [CLICK HERE](#)

Artist Freya Jones
Art Work
Artist Statement

This design was originally a texta drawing on paper that was then made into a sticker and printed onto the power box. I wanted to create a colourful, fun piece that highlights the Wimmera's wonderful creativity. Hopefully it has brought some excitement and happiness to the streets of Horsham.



Location: 11 ROBINSON ST
[Map Link:](#) [CLICK HERE](#)



Artist Amarah's inDigital Art by Kylie

Art Work Untitled

Artist Statement Featuring the digital artworks of artist Kylie.



Location: 31-33 Roberts Ave

Map Link: [CLICK HERE](#)



Artist Lodi Lovett, Kira Marks-Lovett, Tanisha Lovett, Charlotte Barrett, Teagan Muir, Rebecca Roach.

Art Work Celebrating Sistas

Artist Statement Named by the group as Girls Night In; a group of local women meet on a fortnightly basis to discuss issues and create a safe space for young women's business. This artwork was created as a large painting and then graphically designed as a paste up for the nbn box. Art box facilitated by Goolum Goolum.



Location: 49 Hamilton St
Map Link: [CLICK HERE](#)

Artist Imigo Dawn
Goolum Goolum

Art Work **Untitled**

Artist Statement **Imigo** means hope in Yorta Yorta language. Imigo Dawn's artwork takes inspiration from country; the sky, the desert and her culture.



Location: 50 McLachlan ST

Map Link: [CLICK HERE](#)

Artist

Kookas Group

Art Work

Connecting To Country

Artist Statement

KOOKAS program is a local group of Aboriginal and Torres Strait Islanders after school kids group that focuses on education, connection to culture and community. The kids and youth worked collaboratively together to create an artwork that represented what their culture looks like for them. They chose their connection to land by painting such things like Gariwerd (Grampians), trees and the Wimmera River. An Aboriginal man painted in ochre is standing with his spear in his cave. Also in the cave you can see rock paintings, clap sticks, a didgeridoo and a fire place. They also wanted to add their Nyupun totems they were given by local elders into the painting. Art box facilitated by Goolum Goolum.



Location: 43 Hamilton St

Map Link: https://www.google.com/maps/@-36.7177945,142.2029175,3a,75y,181.22h,89.64t/data=!3m7!1e1!3m5!1s85UtYfh8x21ki5XvY95Cug!2e0!6shttps:%2F%2Fstreetviewpixel.s-pa.googleapis.com%2Fv1%2Fthumbnail%3Fpanoid%3D85UtYfh8x21ki5XvY95Cug%26cb_client%3Dmaps_sv.tactile.gps%26w%3D203%26h%3D100%26yaw%3D187.86946%26pitch%3D0%26thumbfov%3D100!7i13312!8i6656

Artist Tanisha Lovett, Kira Marks-Lovett,
Jaala Marks-Lovett, Kelanee Lovett

Art Work Four Sisters, Four Stories

Artist Statement A collective of four artworks by the four Lovett
and Lovett-Marks sisters. All established and
emerging artists in our community.



Location: 108 Wilson St
[Map Link:](#) [CLICK HERE](#)

Artist Lani Jones – Horsham College

Art Work Arapiles Photography

Artist Statement These photos show the beautiful sight of mount Arapiles that I have grown up seeing my entire life. It's unique and gorgeous landscape is special to me and inspired me to capture and share its beauty with everyone.



Location: 22 Wawunna Rd
Map Link: [CLICK HERE](#)

Artist

Hannah French

Art Work

Creatures

Artist Statement

A series of photographs of papier mache birds and animals created between 2012 and 2018. The Creatures are a playful contribution to the art box series, their curious looks designed to delight passers-by.

Hannah French is a visual artist and content producer hailing from Natimuk, Regional Victoria. She works across many different disciplines including animation, video, projection and illustration.



Location: Opposite 1 Pynsent St

Map Link: <https://www.google.com/maps/place/36%C2%B042'55.3%22S+142%C2%B012'16.0%22E/@-36.715644,142.2024168,17z/data=!4m3!1m7!3m6!1s0x6ace454680c8d3eb:0x48ac92a5c91c121a!2s1+Pynsent+St,+Horsham+VIC+3400!3b1!8m2!3d-36.715644!4d142.2046055!3m4!1s0x0:0x0!8m2!3d-36.7151489!4d142.2044511>

Artists Beth Riddington, Dom Murray

Art Work "Untitled" "Untitled" "Karkat Vantas" "Nepeta Leijon"

Artist Statement

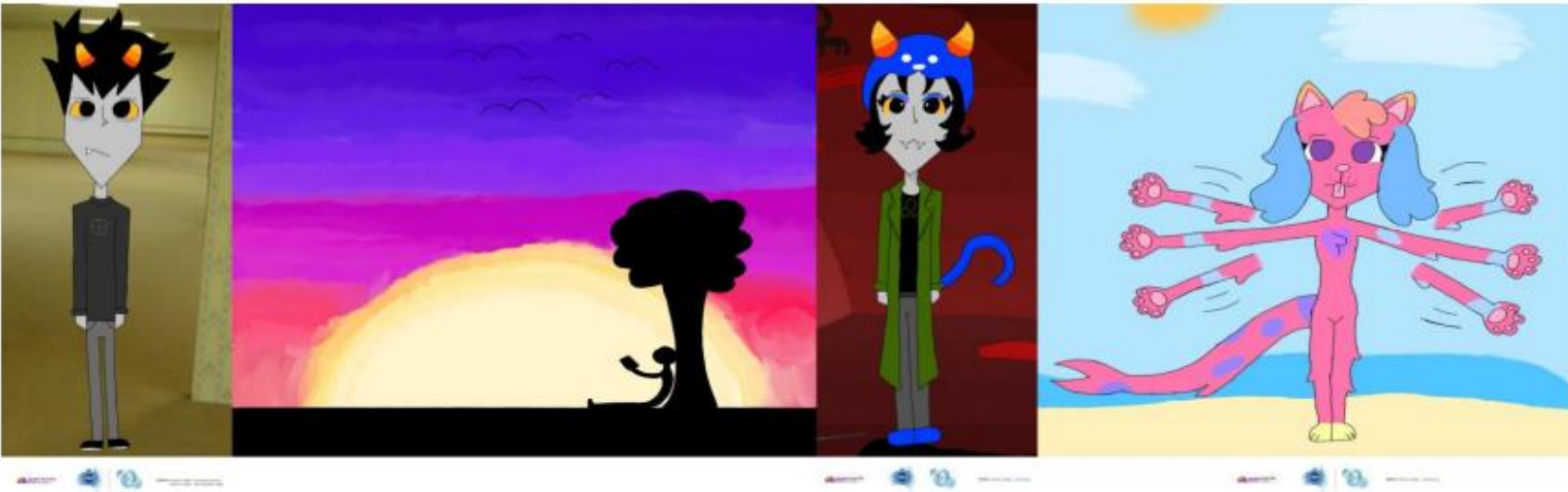
Beth: Reading under the Australian sunset is a wonderful pastime when there is the perfect light.

Dom :

Artwork 1: This character is an original character of mine and is a species created by an artist I liked at the time. They are flapping their arms with excitement which as an autistic person is how I show my excitement and happiness.

Artwork 2: This piece is of Karkat one of the trolls from an old interest of mine a webcomic called Homestuck. He is in the "backrooms" which is an urban legend prevalent on the internet.

Artwork 3: This piece is of Nepeta one of the other trolls from homestuck, she was always one of my favourites because she is a catgirl and also implied to be autistic like me! She is featured in her cave where she lives and her own paintings are seen on the wall.



Location: Opposite 2 Andrew St

[Map Link:](#)

[CLICK HERE](#)

Artist Lincoln Fischer

Art Work Horsham Wildlife

Artist Statement My artwork is of some of the birds and animals you might see in Horsham.
The birds have bright colours and some are very noisy. The animals are all different. Possums can see in the dark. Kangaroos can jump. Wombats can dig and platypus can swim.



Location: 157A Baillie St
Map Link: <https://www.google.com/maps/place/157A+Baillie+St,+Horsham+VIC+3400/@-36.7119821,142.1982191,17z/data=!3m1!4b1!4m5!3m4!1s0x6ace454f12be5e1f:0x2fc332f1e8492359!8m2!3d-36.7119821!4d142.2004078>

Artist

Lani Jones

Art Work

Tree Reflection

Artist Statement

This design was originally designed using acrylic paint which I have layered to create a foreground and background within the painting. I have taken my inspiration for this painting from the many sunsets I have experienced out along the Wimmera river.



Location: 2A Gardenia St

Map Link: <https://www.google.com/maps/place/2A+Gardenia+St,+Horsham+VIC+3400/@-36.7174708,142.1904587,17z/data=!3m1!4b1!4m5!3m4!1s0x6ace453522715773:0x3e7ca1ffa221342f!8m2!3d-36.7174708!4d142.1926474>

Artist Mark Radford

Art Work Eucalyptus

Artist Statement Late in the day, during a warm Wimmera summer, with a westerly setting sun, Eucalyptus Trees appreciate a drink, especially the young ones on the sandy soil. The majestic senior members of the plantings have some secrets hidden, by the layers of dust that the hot northerly winds throw around.

In the right weather conditions, by 'spray painting' our trees with water....some amazing natural colours are revealed.



Location: 4 Glead St
[Map Link: CLICK HERE](#)