

'THE STATION - A PLACE WHERE ALL ARE WELCOME'

DESIGN INTENT - CONSISTENT WITH STAGE 1 WORKS ALREADY COMPLETED

To reference our living history and past through creative interpretation of materials and place

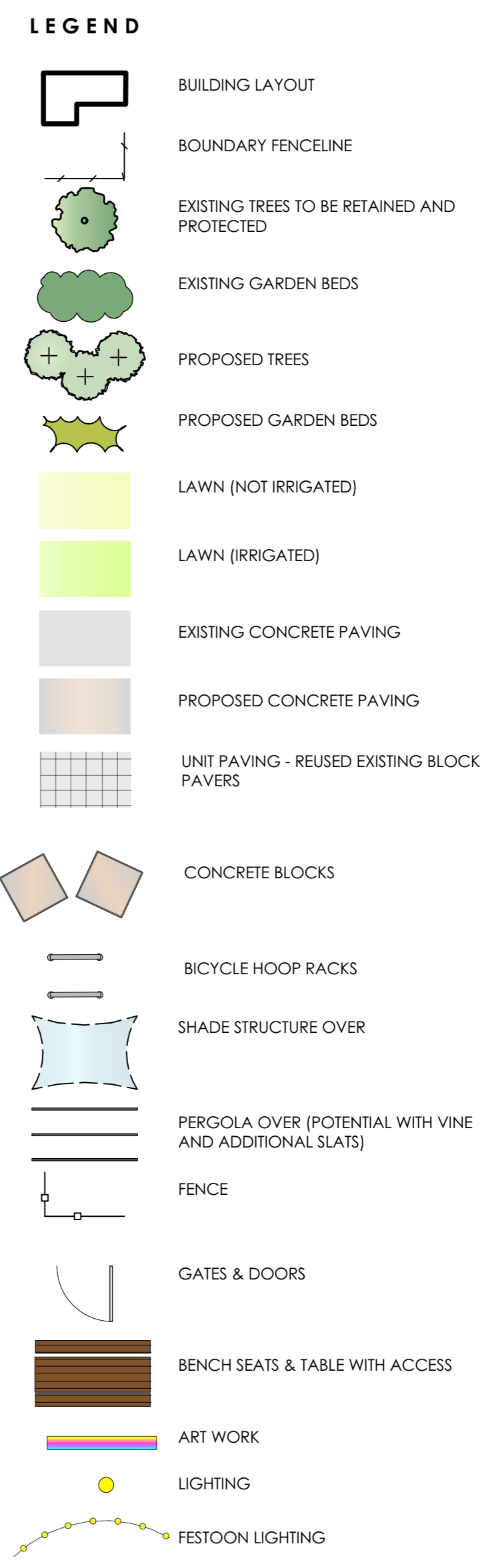
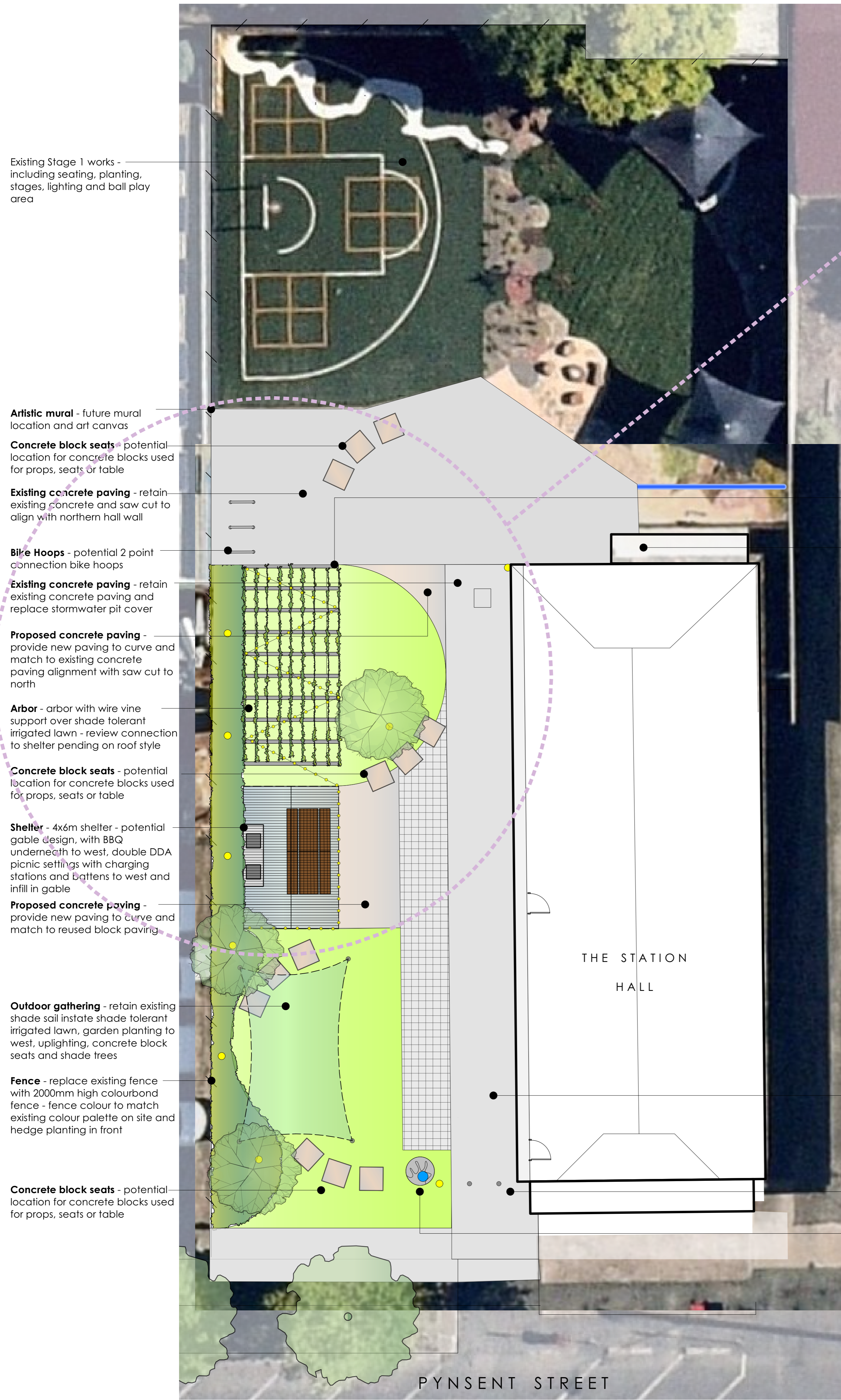
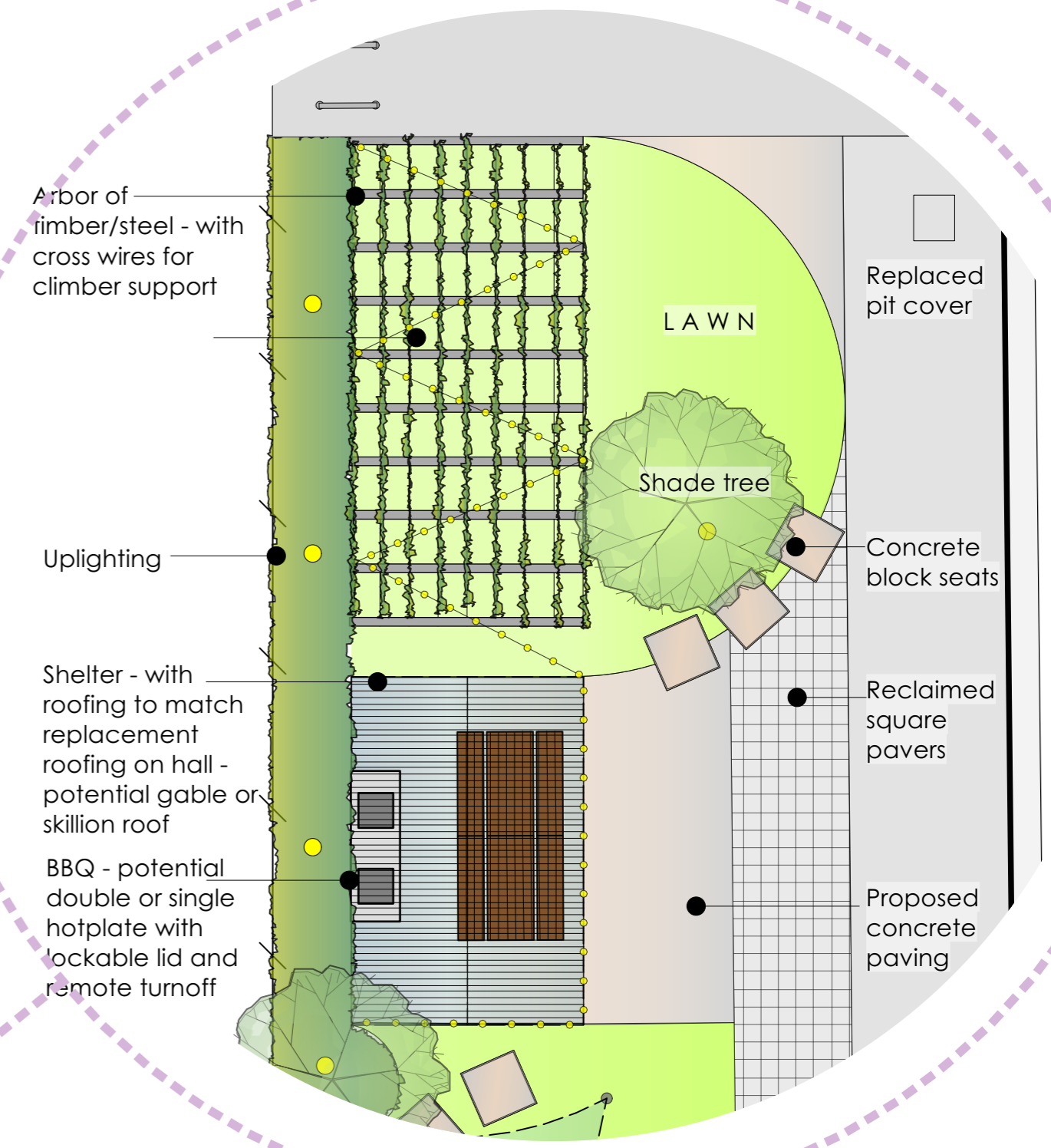
To create an environment that supports opportunities for the young people of the community to gather, play and create lasting memories

To create an environment that supports the principles of biodiversity through a broad range of plant selection thus supporting a reduction in the reflective heat of the space and improved amenity all the while creative a natural oasis and safe/natural space for the visitors

To incorporate principles of sustainability through the use of re-used and reclaimed materials, creating natural shade, natural form and natural ecological principles

Foster creativity through opportunities to incorporate artistic elements into the design - providing a broad range of artistic pursuits and a canvas for temporary workshops and programs

SHELTER DETAIL



Lighting - overhead festoon lighting

Toilet/ storage - by others

Existing concrete paving - retain existing concrete paving - extend useable hardstand area with reclaimed pavers

Traffic control - removable bollards at laneway entrance

Sculpture - to be retained in existing location - consider lighting

